

# 15485 and 15486

## Vitrophyric Pigeonite Basalt

104.9 and 46.8 grams

### Introduction

Samples 15485 and 15486 were collected from the side of the boulder at Dune Crater, along with 15499, which was from the top (see figures 2 and 3 in section on 15499). The boulder had obvious bands of vesicularity (Swann et al. 1971, Albee et al. 1972).



Figure 1: Photo of 15486. Cube is 1 inch. NASA S71-44255.

15485 and 15486 are samples of vitrophyric pigeonite basalt, a rapidly cooled variety of quartz-normative basalt found to be rather common at the Apollo 15 site. They are very vesicular with porphyritic, diktytaxitic texture (figure 3). The age of this boulder is 3.4 b.y. and it has an exposure age of 114 m.y. (determined on 15499).

### Petrography

Albee et al. (1972) described 15486 as a “porphyritic, clinopyroxene vitrophyre composed of elongate pyroxene prisms in a matrix of opaque devitrified glass with 3% globulose vugs.” Pyroxene crystals are highly zoned (figure 8).

### Chemistry

The chemical composition of 15485, 15486 was determined by Duncan et al. (1976), Cuttita et al. (1973), Helmke et al. (1973) and O’Kelly et al. (1973)(figure 4 and 5).

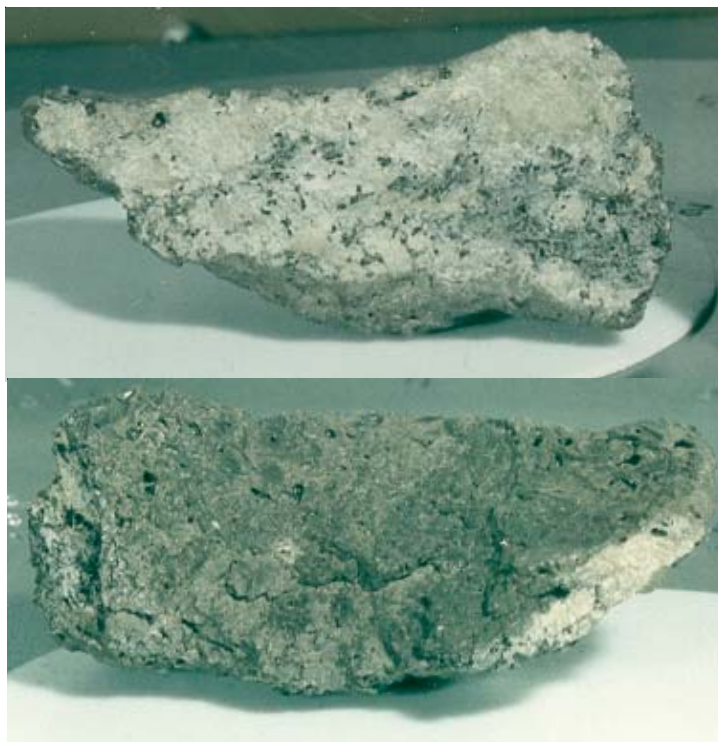


Figure 2: Photos of light-colored interior and dark-colored exterior of 15486 showing an apparently “weathered” patina on exterior. NASA S71-44250 and 44252. Sample is about 5 cm long.

### Mineralogical Mode for 15486

	Sample Catalog Butler 1971	Albee et al. 1972	norm. matrix
Olivine			
Pyroxene	50	53	35
Plagioclase			53
Silica			7
Opaques		0.2	4
Groundmass	45	44	
Vugs		3	

### Processing

A slab was cut from the center of 15485 (figure 9).

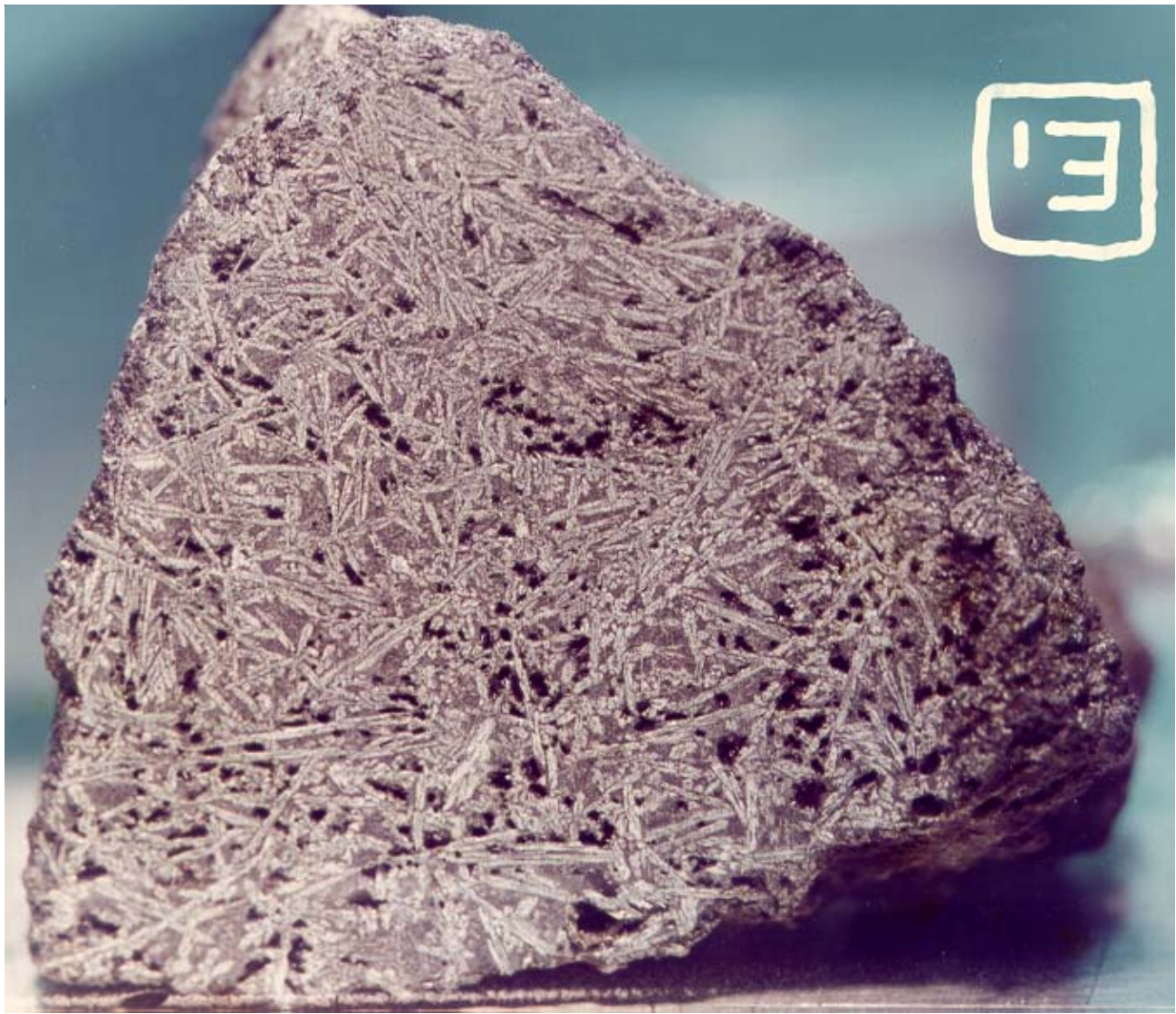


Figure 3: Photo of sawn surface of 15485 showing randomly oriented pyroxene needles in glassy matrix (with abundant pore space). Sample is about 3 cm across in this view. NASA S74-32562.

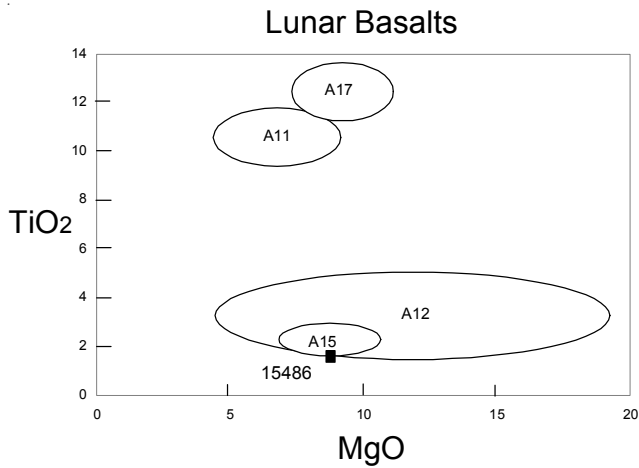


Figure 4: Chemical composition of 15485 and 15486 compared with that of other lunar basalts.

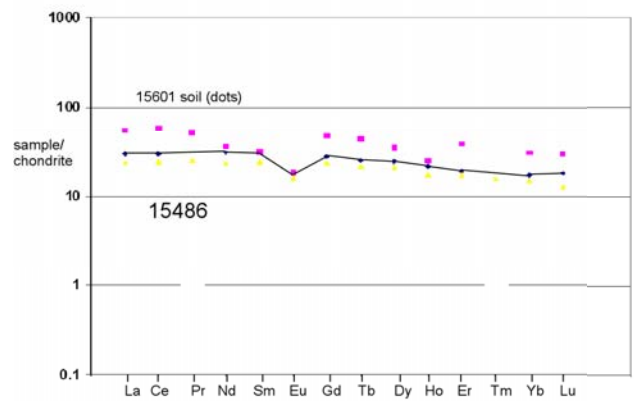


Figure 5: Normalized rare-earth-element diagram for 15486 compared with that of 15601.

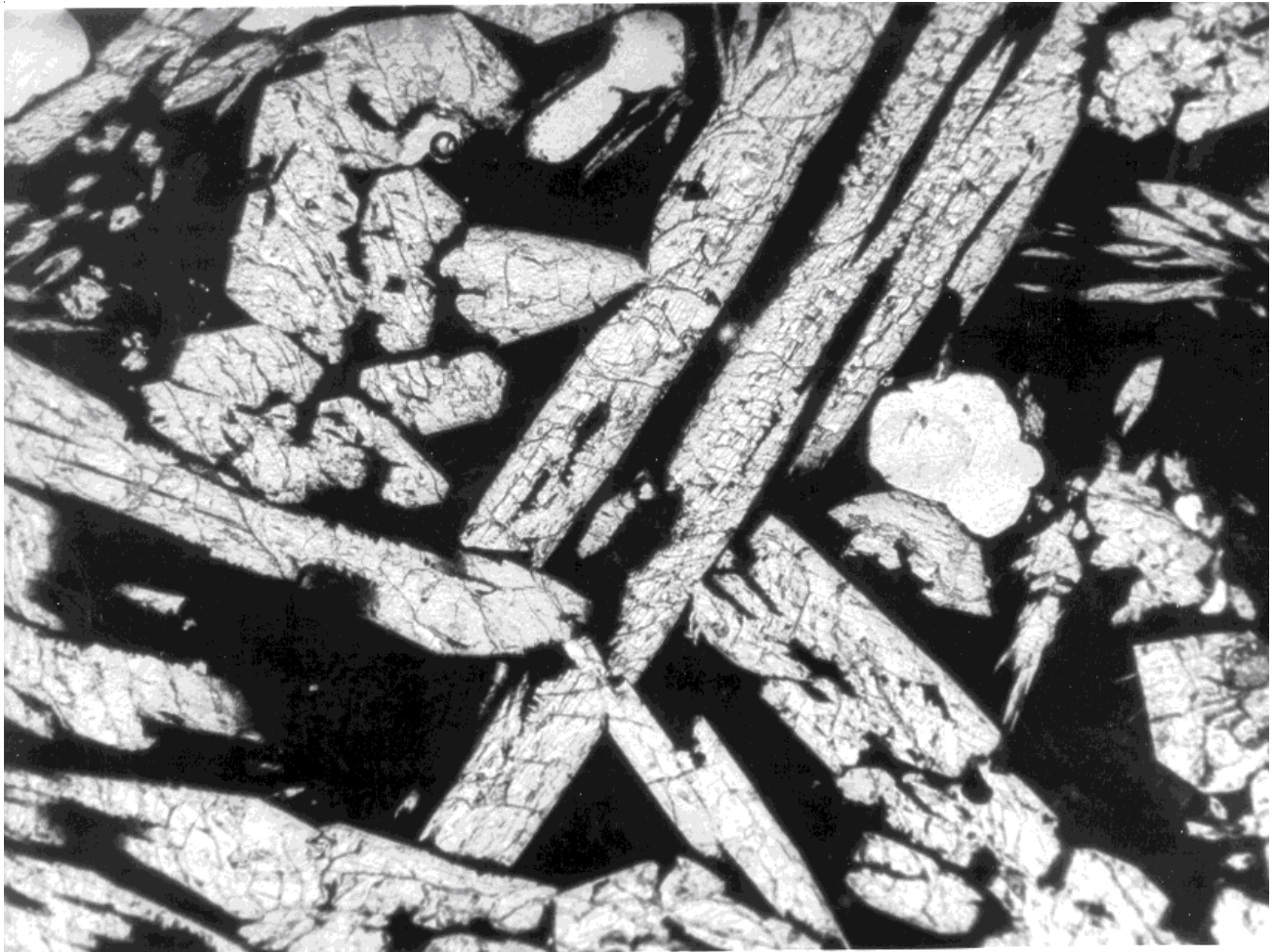


Figure 6: Photomicrograph of thin section of 15485 showing skeletal pyroxene crystals in devitrified black glass matrix. NASA S74-23055. Scale about 2 mm.

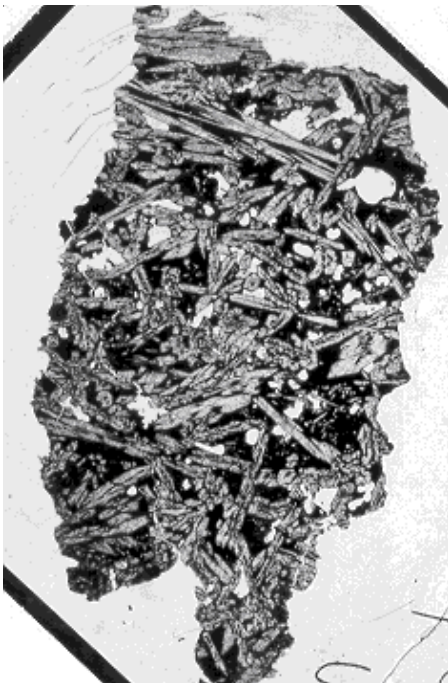


Figure 7: Thin section photomicrograph of 15486,22. Scale is about 1 x 2 cm.

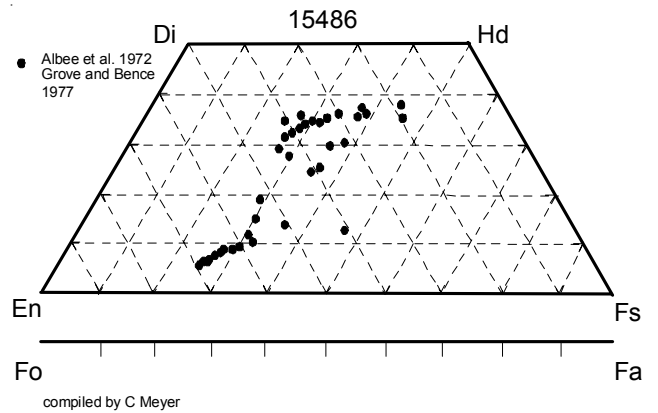


Figure 8: Pyroxene composition of 15486.

**Table 1. Chemical composition of 15485.**

reference weight	Duncan 76	
SiO2 %	47.39	(a)
TiO2	1.77	(a)
Al2O3	9.14	(a)
FeO	19.82	(a)
MnO	0.27	(a)
MgO	9.48	(a)
CaO	10.21	(a)
Na2O	0.28	(a)
K2O	0.03	(a)
P2O5	0.084	(a)
S %	0.06	(a)
sum		
Sc ppm		
V	177	(a)
Cr	3934	(a)
Co	42	(a)
Ni	22	(a)
Cu	4	(a)
Zn	<2	(a)
Ga		
Ge ppb		
As		
Se		
Rb	<1.4	(a)
Sr	104	(a)
Y	32.2	(a)
Zr	113	(a)
Nb	5.5	(a)
Mo		
Ru		
Rh		
Pd ppb		
Ag ppb		
Cd ppb		
In ppb		
Sn ppb		
Sb ppb		
Te ppb		
Cs ppm		
Ba	71	(a)
La		
Ce		
Pr		
Nd		
Sm		
Eu		
Gd		
Tb		
Dy		
Ho		
Er		
Tm		
Yb		
Lu		
Hf		
Ta		
W ppb		
Re ppb		
Os ppb		
Ir ppb		
Pt ppb		
Au ppb		
Th ppm		
U ppm		
technique:	(a) XRF, (b)	

**Table 2. Chemical composition of 15486.**

reference weight	Cuttitta73	Helmke73	O'Kelley73	
SiO2 %	48.25	(a)		
TiO2	1.81	(a)		
Al2O3	10	(a)		
FeO	19.85	(a)		
MnO	0.29	(a)		
MgO	8.8	(a)		
CaO	10.25	(a)		
Na2O	0.37	(a)		
K2O	0.08	(a)	0.061	(d)
P2O5	0.13	(a)		
S %				
sum				
Sc ppm	54	(b)	44.2	(c)
V				
Cr	3421	(b)		
Co	100	(b)	47	(c)
Ni	62	(b)		
Cu	10	(b)		
Zn				
Ga	7.8	(b)		
Ge ppb				
As				
Se				
Rb	1.3	(b)		
Sr	135	(b)		
Y	36	(b)		
Zr	127	(b)		
Nb	10	(b)		
Mo				
Ru				
Rh				
Pd ppb				
Ag ppb				
Cd ppb				
In ppb				
Sn ppb				
Sb ppb				
Te ppb				
Cs ppm				
Ba	74	(b)		
La			7.09	(c)
Ce			18	(c)
Pr				
Nd			14	(c)
Sm			4.57	(c)
Eu			0.977	(c)
Gd			5.5	(c)
Tb			0.92	(c)
Dy			5.96	(c)
Ho			1.2	(c)
Er			3	(c)
Tm				
Yb	4.4	(b)	2.79	(c)
Lu			0.44	(c)
Hf				
Ta				
W ppb				
Re ppb				
Os ppb				
Ir ppb				
Pt ppb				
Au ppb				
Th ppm				
U ppm			0.64	(d)
			0.15	(d)
technique:	(a) XRF, (b) OES, (c) INAA, (d) radiation counting			

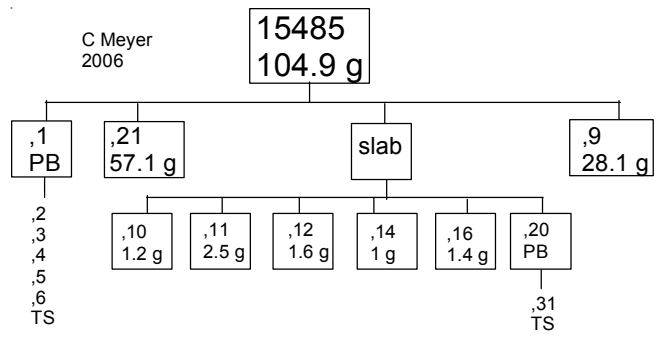
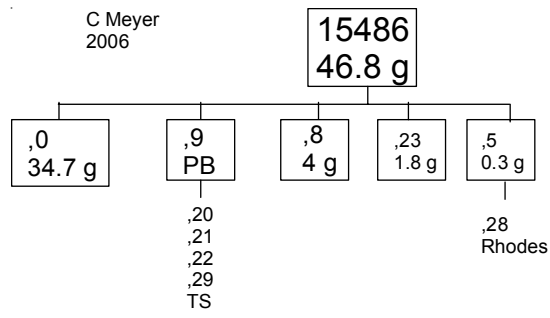


Figure 9: Slab cut from 15485. NASA S74-32793. Small cube is 1 cm.

## References for 1548 and 15486

- Albee A.L., Chodos A.A. and Gancarz A.J. (1972) Petrology of Apollo 15 sample 15486. In *The Apollo 15 Lunar Samples*, 20-25. Lunar Science Institute, Houston.
- Butler P. (1971) *Lunar Sample Catalog, Apollo 15*. Curators' Office, MSC 03209
- Cuttita R., Rose H.J., Annell C.S., Carron M.K., Christian R.P., Ligon D.T., Dwornik E.J., Wright T.L. and Greenland L.P. (1973) Chemistry of twenty-one igneous rocks and soils returned by the Apollo 15 mission. *Proc. 4<sup>th</sup> Lunar Sci. Conf.* 1081-1096.
- Duncan A.R., Erlank A.J., Sher M.K., Abraham Y.C., Willis J.P. and Ahrens L.H. (1976a) Some trace element constraints on lunar basalt genesis. *Proc. 7<sup>th</sup> Lunar Sci. Conf.* 1659-1671.
- Eldridge J.S., O'Kelley G.D. and Northcutt K.J. (1972) Concentrations of cosmogenic radionuclides in Apollo 15 rocks and soils. In *The Apollo 15 Lunar Samples* 357-359. Lunar Sci. Institute, Houston.
- Grove T.L. and Walker D. (1977) Cooling histories of Apollo 15 quartz-normative basalts. *Proc. 8<sup>th</sup> Lunar Sci. Conf.* 1501-1520.
- Grove T.L. and Bence A.E. (1977) Experimental study of pyroxene-liquid interactions in quartz-normative basalt 15597. *Proc. 8<sup>th</sup> Lunar Sci. Conf.* 1549-1579.
- Helmke P.A., Blanchard D.P., Haskin L.A., Telander K., Weiss C. and Jacobs J.W. (1973) Major and trace elements in igneous rocks from Apollo 15. *The Moon* **8**, 129-148.
- Lofgren G.E., Donaldson C.H., Williams R.J., Mullins O. and Usselman T.M. (1974) Experimentally reproduced textures of Apollo 15 basalts. *Proc. 5<sup>th</sup> Lunar Sci. Conf.* 549-567.
- Lofgren G.E. and Lofgren E.M. (1981) *Catalog of Lunar Mare Basalts greater than 40 grams*. LPI Cont. 438. Lunar Planetary Institute, Houston.
- O'Kelley G.D., Eldridge J.S. and Northcutt K.J. (1972) Abundances of primordial radioelements K, Th, and U in Apollo 15 samples, as determined by non-destructive gamma-ray spectrometry. In *The Apollo 15 Lunar Samples* (Chamberlain J.W. and Watkins C., eds.), 244-246. Lunar Science Institute, Houston.
- Ryder G. (1985) *Catalog of Apollo 15 Rocks* (three volumes). Curatorial Branch Pub. # 72, JSC#20787
- Sutton R.L., Hait M.H., Larson K.B., Swann G.A., Reed V.S. and Schaber G.G. (1972) Documentation of Apollo 15 samples. Interagency report: *Astrogeology* 47. USGS
- Swann G.A., Hait M.H., Schaber G.C., Freeman V.L., Ulrich G.E., Wolfe E.W., Reed V.S. and Sutton R.L. (1971) Preliminary description of Apollo 15 sample environments. U.S.G.S. Interagency report: 36. pp219 with maps
- Swann G.A., Bailey N.G., Batson R.M., Freeman V.L., Hait M.H., Head J.W., Holt H.E., Howard K.A., Irwin J.B., Larson K.B., Muehlberger W.R., Reed V.S., Rennison J.J., Schaber G.G., Scott D.R., Silver L.T., Sutton R.L., Ulrich G.E., Wilshire H.G. and Wolfe E.W. (1972) 5. Preliminary Geologic Investigation of the Apollo 15 landing site. In *Apollo 15 Preliminary Science Rpt.* NASA SP-289. pages 5-1-112.