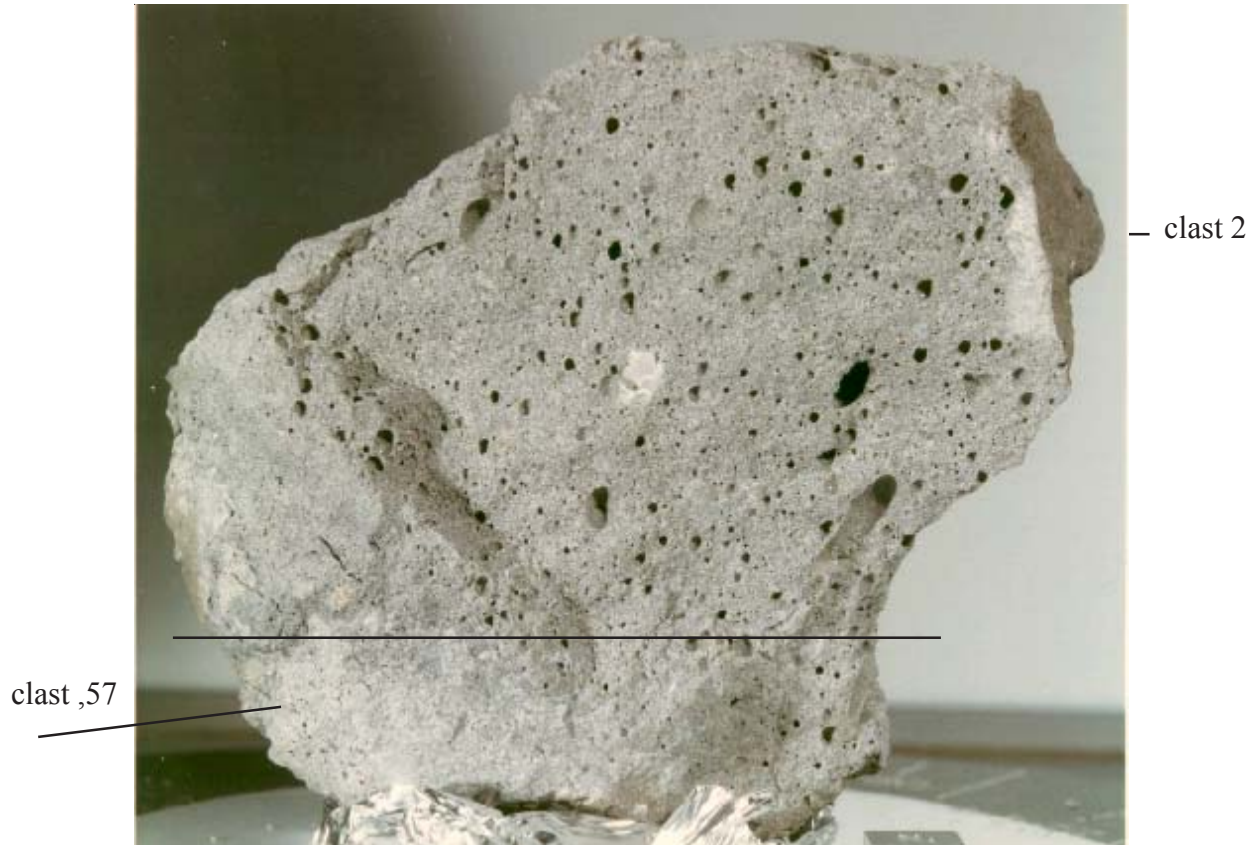


**77135**  
**Poikilitic Impact-melt Breccia**  
 337.4 grams



*Figure 1: Photo of freshly broken suface of 77135 illustrating clasts and vesicular interior. Edge of cube is 1 cm. Approximate location of saw cut is shown. NASA# S72-56391*

**Introduction**

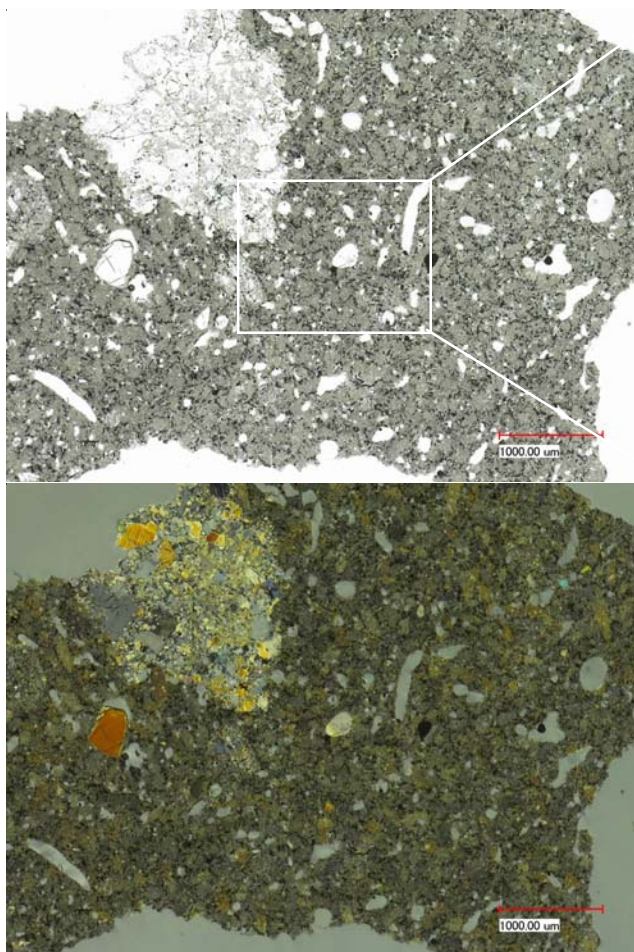
Sample 77135 was sampled as “green-gray breccia” from the boulder at Station 7 (figure 3). It is an impact melt breccia remarkably similar in textural appearance and chemical composition to 76015 and other samples from the large boulder at Station 6 (Chao et al 1975 and Winzer et al. 1975). The probably origin of impact melt breccias has been explained by Simonds (1975) and Onorato et al. (1976). However, some researchers indicate an igneous origin (Storey et al. 1974, Basaltic

Volcanism Study). It has even been equated with “low-K Fra Mauro basalt” (Vaniman and Papike 1980).

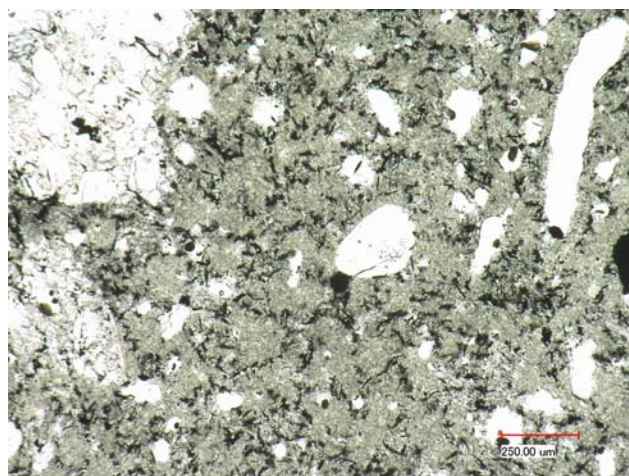
In fact, sample 77135 is a fine-grained, gray, vesicular, fragment-laden, crystalline matrix breccia (figure 1). It has two parts: a larger, highly vesicular part which includes clasts of recrystallized troctolitic anorthosite and a smaller less vesicular part which includes recrystallized troctolitic breccia (Minkin et al. 1978).

**Mineralogical Mode of 77135**

	Minkin et al. 1978		Vaniman and Papike 1979	Chao and Minkin 1975
	More vesicular	Less vesicular		
Pyroxene	31 vol. %	17	30	31
Plagioclase	56	62	41	53
Olivine	7.3	17	15	13
Ilmenite	2.3	3.6	1.4	3
K-rich material	2.6	0.3		



*Figure 2a: Photomicrographs of thin section 77135,26 by C Meyer @50x.. Partially crossed nicols.*



*Figure 2b: Photomicrograph of 77135,26 @150x.*

77135 was sampled as the stratigraphically youngest lithology on the Station 7 boulder (Butler and Dealing 1974).

This sample and others from the Station 7 boulder were studied by the International Consortium led by Ed Chao (see summary by Minkin et al. 1978). The results on 77135 were also summarized in the catalog by Meyer (1994). The crystallization age is about 3.85 b.y. with about 30 m.y. exposure to cosmic rays.

*Figure 3: Photo of station 7 boulder with astronaut pointing to location of 77135. As17-146-22338.*





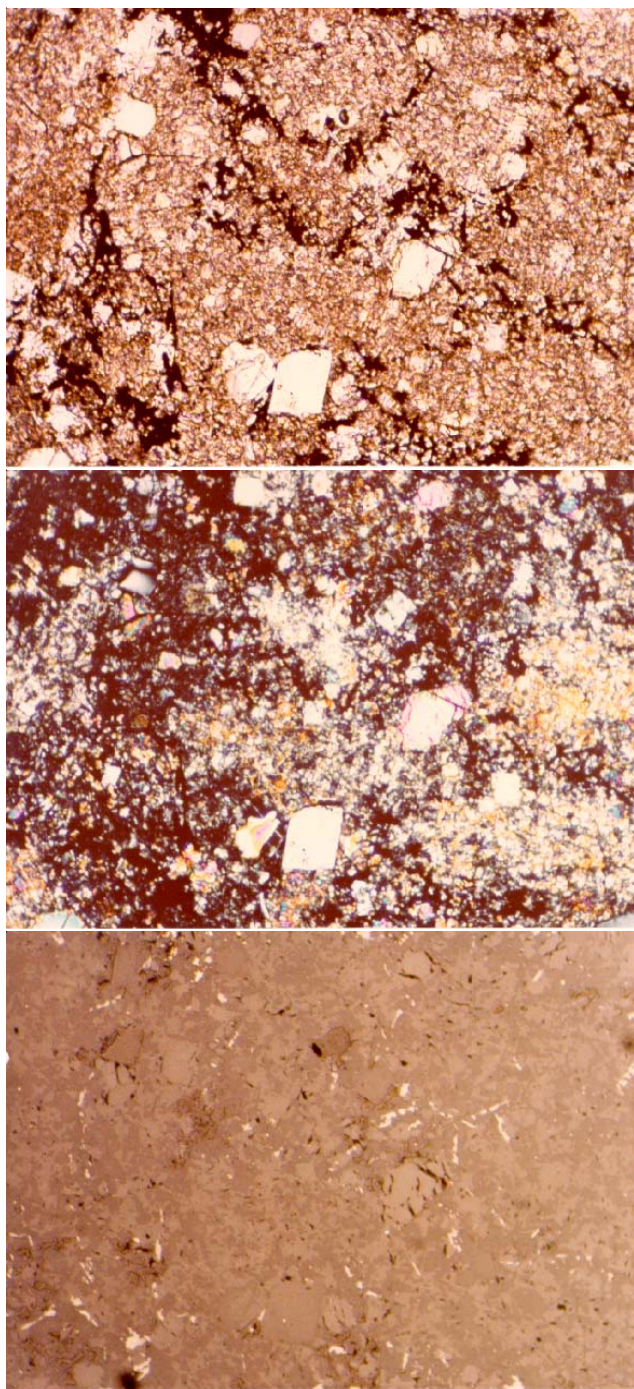


Figure 4: Photomicrographs of thin section 77135,7 illustrating matrix and small clasts. Field of view is 1.4 mm. a) plane polarized light NASA# S79-27747, b) crossed nicols NASA# S79-27748, c) reflected light NASA # S79-27746.

### **Petrography**

Warner et al. (1973), Chao et al. (1974), Bence et al. (1974), Chao and Minkin (1975) and McGee et al. (1980) have provided descriptions of 77135. It contains two texturally distinct fragment-laden melt rock units: a vesicular, coarser-grained matrix lithology with

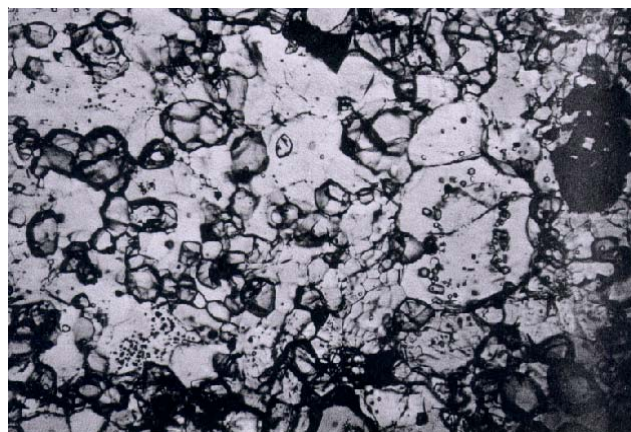


Figure 5: Photomicrograph of small clast in thin section 77135,27. Small polygonal olivine grains in mostly plagioclase matrix (from Chao et al. 1974). This is “anorthositic troctolite” clast 2 (52).

vesicles 100-500 microns and a less-vesicular, finer-grained matrix lithology with vesicles 50–150 microns. Bence et al. (1974) describe the texture as poikiloblastic, while members of the International Consortium refer to it as “fragment-laden, pigeonite basalt”(Minkin et al. 1978).

The coarse-grained matrix of 77135 consists predominantly of poikilitic pyroxene (mostly pigeonite with minor augite) enclosing subhedral to euhedral plagioclase and minor olivine (figures 2 and 4). Borders between pyroxene oikocrysts contain granular olivine, ilmenite plates and rods and mesostasis. The pyroxene oikocrysts enerally are 200-600 microns in size, but some are larger than 1 mm.

The finer-grained matrix commonly surrounds or is adjacent to large lithic clasts. The matrix of the finer fraction also consists predominantly of poikilitic pyroxenes (75-200 microns) enclosing plagioclase. Intergrowths of olivine and plagioclase form aggregates approximately the same size as pyroxene oikocrysts. There appears to be more olivine, less pyroxene and less vesicles in the finer-grained lithology.

The characteristic poikilitic texture of 77135 and other lunar melt rocks is apparently the result of enhanced growth of pyroxene and ilmenite enclosing smaller grains of feldspar and olivine. Simonds (1973) and Lofgren (1977) explain that poikilitic texture in these melt rocks is the result of two-stage cooling: initial rapid cooling near the coetectic with nucleation of feldspar and olivine at many foci, followed by slower

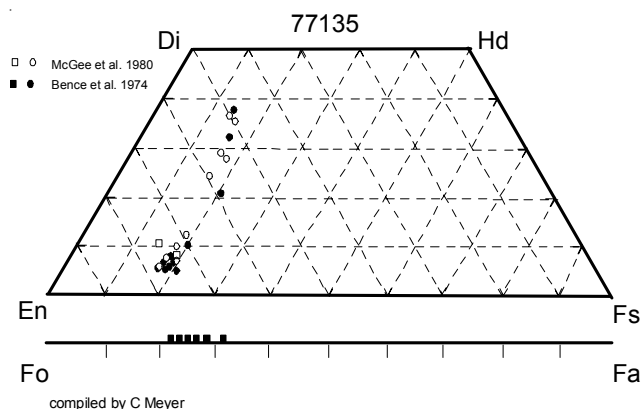


Figure 6: Pyroxene and olivine composition diagram for 77135 (data from McGee et al. 1980, Bence et al. 1974).

cooling and crystallization at the point where pyroxene saturation is reached, allowing growth of large pyroxene grains encompassing the previous crystals. Ilmenite and other minerals form in the mesostasis between oikocrysts.

### Significant Clasts

Two clasts in 77135 have been carefully extracted (Butler and Dealing 1974), described by Chao et al. (1974) and analyzed by Winzer et al. (1974) and Morgan et al. (1974). The locations of these clasts are shown in figure 1.

#### Clast 1 (77135,57) “olivine-rich” clast

According to Chao et al. (1974) the texture of this “recrystallized xenolith” is distinctly metamorphic with many triple-point grain-boundary junctions. The high Ir content (17 ppm) of this clast showed that it was non-pristine (Higuchi and Morgan 1975). Stettler et al. (1978) and Nunes et al. (1974) dated this clast at 3.88 and 3.89 b.y. respectively (figures 10 and 12).

#### Clast 2 (77135,52) “troctolitic anorthosite” clast

The texture of this clast is metamorphic (figure 5). Morgan et al. (1974) found that this clast had high Ir

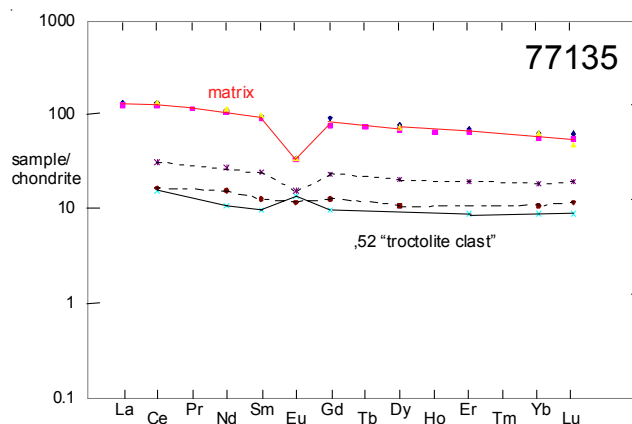


Figure 7: Normalized rare-earth-element diagram for matrix and clasts in 77135 (data from table 1).

(non-pristine). Stettler et al. (1974) dated it at 3.99 b.y. (figure 8).

### Mineralogy

**Olivine:** Olivine ( $\text{Fo}_{64-79}$ ) occurs both as rounded inclusions in pigeonite and as irregular grains associated with anhedral plagioclase. Bence et al. (1974), Chao and Minkin (1974), Vaniman and Papike (1980), Smith et al. (1980) and Ryder (1992) analyzed olivine.

**Pyroxene:** The dominant pyroxene in the matrix of 77135 is pigeonite ( $\text{Wo}_{5-12}\text{En}_{67-76}\text{Fs}_{19-21}$ ). Augite is minor (figure 6). McGee et al. (1980) studied the fine exsolution in pyroxenes in 77135 and other samples of the Station 7 boulder.

**Plagioclase:** Plagioclase in the matrix occurs in two distinct morphological types: as small, sharply-defined laths or elongated platy inclusions ( $\text{An}_{91}$ ) in the poikilitic pyroxene. Vaniman and Papike (1980) give plagioclase analyses ( $\text{An}_{83-97}$ ). Steele et al. (1980) analyzed plagioclase by ion microprobe.

### Summary of Age Data for 77135

	Ar39/40	Rb/Sr	
Stettler et al. 1974	3.83 ± 0.04		matrix
	3.99 ± 0.02		clast ,51
Stettler et al. 1975	3.90 ± 0.03		
Stettler et al. 1978	3.88 ± 0.05		clast ,57
	3.87 ± 0.05		clast ,41
Nakamura et al. 1976		4.14 ± 0.08	mixing line ?
Nunes et al. 1974		3.89 ± 0.08	clast ,57
Dalrymple and Ryder 1996	>3.743		

**Caution: Data not corrected for new decay constants.**

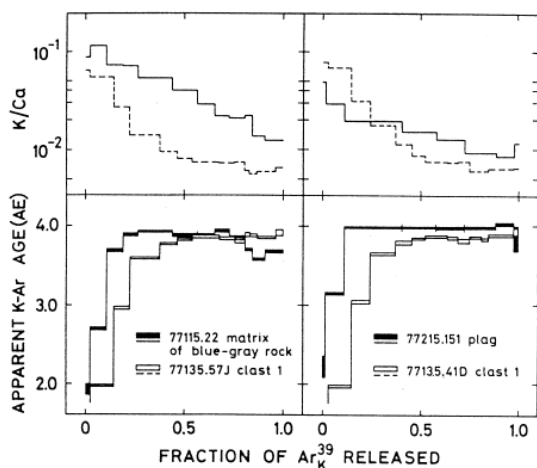


Figure 8: Argon 39/40 release patterns for 77135 clasts .57 and .41 (from Stettler et al. 1978).

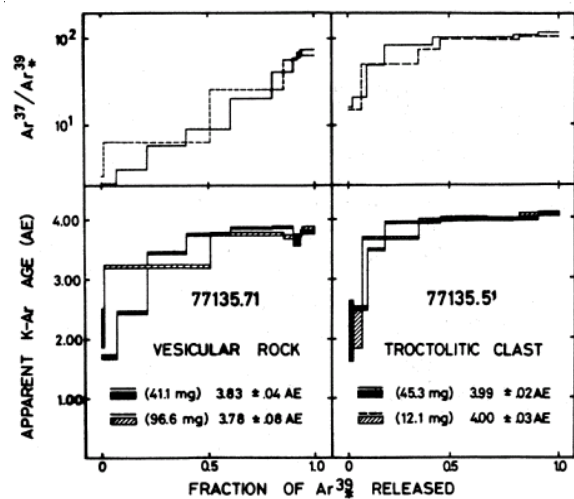


Figure 9: Argon 39/40 release patterns for matrix and clast (.51) in 77135 (from Stettler et al. 1974).

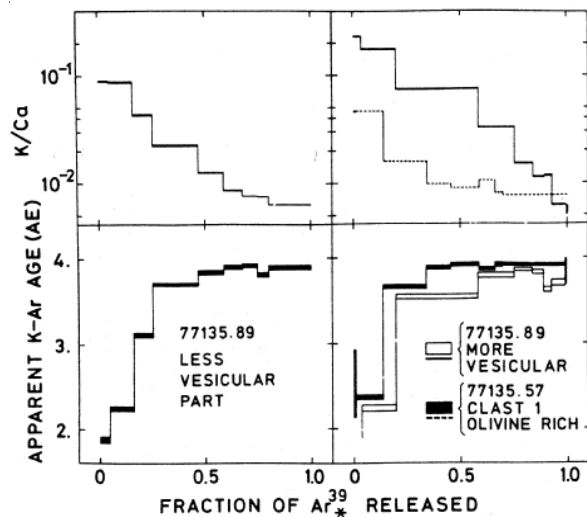


Figure 10: Argon 39/40 release patterns for matrix and clast .57 (from Stettler et al. 1975).

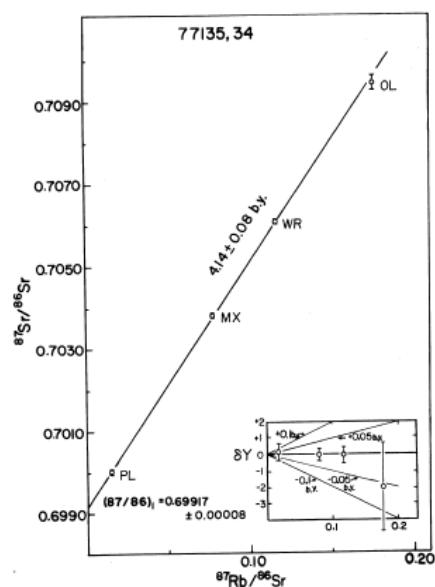


Figure 11: Apparent Rb-Sr mineral "isochron" (or mixing line) for 77135 matrix, including small plagioclase xenoliths. No significance should be given to this "age" (see discussion). Figure from Nakamura et al. (1996).

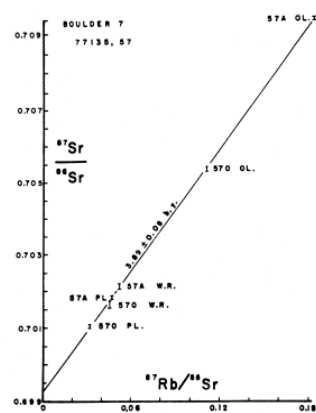


Figure 12: Rb-Sr internal mineral isochron of an olivine-rich clast (.57) in 77135 (from Nunes et al. 1974).

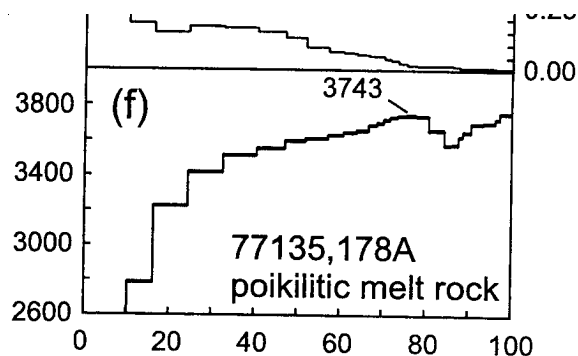


Figure 13: Ar/Ar release pattern for 77135 (Dalrymple and Ryder 1996).



reference	LSPET 73 Rhodes 74 Norman 02						t. clast				matrix matrix clast			
							Winzer 77				Winzer 74			
weight	,2		,5				,52	,82	,91	,41	,66	,77	,57	
SiO2 %	46.13	(a)	46.17	(a)	46.1	(b)	44.4	47.5	46.3	45.3	45.3	46.3		(f)
TiO2	1.54	(a)	1.53	(a)	1.48	(b)	0.24	1.45	1.31	0.43	1.72	1.48		(g)
Al2O3	18.01	(a)	17.83	(a)	18.5	(b)	27.81	17.18	19.82	25.13	18.03	18.39		(f)
FeO	9.11	(a)	9.1	(a)	8.04	(b)	4.19	9.01	8.28	5.98	9.56	9.48		(f)
MnO	0.13	(a)	0.13	(a)	0.12	(b)	0.05	0.11	0.1	0.06	0.11	0.11		(f)
MgO	12.63	(a)	12.39	(a)	11.6	(b)	7.96	12.66	11.78	8.59	13.38	12.19		(f)
CaO	11.03	(a)	11.08	(a)	11.1	(b)	15.09	10.91	11.74	13.95	10.64	10.96		(f)
Na2O	0.53	(a)	0.69	(a)	0.71	(b)	0.41	0.66	0.56	0.4	0.61	0.65		(f)
K2O	0.3	(a)	0.27	(a)	0.26	(b)	0.07	0.41	0.21	0.09	0.22	0.23	0.048	(e)
P2O5	0.28	(a)	0.3	(a)			0.03	0.29	0.21	0.1	0.28	0.28		(g)
S %	0.08	(a)	0.07	(a)										
sum														
Sc ppm					17.1	(b)								
V					43	(b)								
Cr	1368	(a)			1332	(b)								
Co					17.4	(b)								
Ni	110	(a)	62	(a)	127	(b)								
Cu					18.6	(b)								
Zn	10	(a)	4	(a)	14.6	(b)								
Ga					5.3	(b)								
Ge ppb														
As														
Se														
Rb	7.32	(e)	6.2	(a)	7.2	(b)	2			2.67	5.99	6.63	1.18	(e)
Sr	172	(e)	174	(a)	194	(b)	147	177	171	147	169	181	87.4	(e)
Y	107	(a)	111	(a)	117	(b)								
Zr	494	(a)	508	(a)	520	(b)	62.1			146	308	643	71.8	(e)
Nb	33	(a)	33	(a)	36.1	(b)								
Mo														
Ru					2.82	(c )								
Rh														
Pd ppb					3.97	(c )								
Ag ppb														
Cd ppb														
In ppb														
Sn ppb														
Sb ppb														
Te ppb														
Cs ppm					0.28	(b)								
Ba	337	(e)			339	(b)	63.3	360	294	96.6	343	359	60.8	(e)
La	32.1	(e)			30.1	(b)								
Ce	81.2	(e)			76	(b)	9.63	82.8	59.2	19.4	81.2	83.3	10.5	(e)
Pr					10.6	(b)								
Nd	51.6	(e)			48.9	(b)	4.99	53.2	41.1					

**Table 1b. Chemical composition of 77135.**

reference	Morgan 74				Higuchi 75	Rancitelli 74	Dalrymple96	
<i>weight</i>								
SiO <sub>2</sub> %								
TiO <sub>2</sub>								
Al <sub>2</sub> O <sub>3</sub>								
FeO							8.7	(i)
MnO								
MgO								
CaO								
Na <sub>2</sub> O							0.67	
K <sub>2</sub> O						0.22	(e) 0.26	
P <sub>2</sub> O <sub>5</sub>								
S %								
<i>sum</i>								
Sc ppm							16.7	(i)
V								
Cr							1359	(i)
Co							16	(i)
Ni	205	174	412	438	221	(d)	122	(i)
Cu								
Zn	2.9	2.6	2.4	3.3	2	(d)		
Ga								
Ge ppb	295	50	78	618	113	(d)		
As								
Se	137	11.3	33	144	40	(d)		
Rb	6.5	1.8	2.6	6.1	3.59	(d)	8	(i)
Sr							190	(i)
Y								
Zr							350	(i)
Nb								
Mo								
Ru								
Rh								
Pd ppb								
Ag ppb	1.1	0.38	0.58	1.2	0.7	(d)		
Cd ppb	10.5	6.8	3.7	3.5	2.4	(d)		
In ppb								
Sn ppb								
Sb ppb	1.21	0.58	0.47	2.16	0.778	(d)		
Te ppb	3.6	1.32	1.1	8.84	5	(d)		
Cs ppm	0.27	0.07	0.07	0.25	0.0953	(d)	0.29	(i)
Ba							346	(i)
La							33.5	(i)
Ce							89.1	(i)
Pr								
Nd							63	(i)
Sm							15.5	(i)
Eu							1.99	(i)
Gd								
Tb							3.3	(i)
Dy								
Ho								
Er								
Tm								
Yb							11.3	(i)
Lu							1.5	(i)
Hf							12.2	(i)
Ta							1.54	(i)
W ppb								
Re ppb	0.49	0.66	1.42	1.06	1.38	(d)		
Os ppb								
Ir ppb	3.78	7.2	15.1	10.5	17.4	(d)		
Pt ppb								
Au ppb	3.57	1.46	4.74	6.45	3.09	(d)		
Th ppm							5.51	(e) 5.2 (i)
U ppm	1.39	0.26	0.45	1.38	0.59	(d) 1.42	(e) 1.6	(i)
<i>technique:</i>	(d) RNAA, (e) IDMS, (i) INAA							

**Table 2: Composition of 77135**

	U ppm	Th ppm	K2O %	Rb ppm	Sr ppm	Nd ppm	Sm ppm	technique
Rancitelli et al. 1974	1.42	5.51						counting
Nunes et al. 1974	1.39	5.224						IDMS
Hubbard et al. 1975	1.5	5.6	0.3	7.32	172	51.6	14.6	IDMS
Nakamura et al. 1976			0.226	6.77	167.5			IDMS
Winzer et al. 1974			0.22	5.99	169	52.2	14.7	IDMS
			0.23	6.63	181	54.6	15.4	IDMS
Norman et al. 2002	1.47	5.69		7.2	194	48.9	13.9	ICP-MS

**Ilmenite:** Engelhart (1979) has studied ilmenite in 77135.

### **Chemistry**

Norman et al. (2002) give a complete analysis of the matrix of 77135 (table 1a), which is entirely consistent with that of earlier analyses by Winzer et al. (1974 and 1977), Hubbard et al. (1974) and Rhodes et al. (1974) (figure 7). Morgan et al. (1974) and Hugichi and Morgan (1975) have measured the trace element contents of matrix and clasts. Gibson and Moore (1974 and Gibson et al. (1987) give sulfur and hydrogen contents.

### **Radiogenic age dating**

Turner and Cadogan (1975) and Dalrymple and Ryder (1996) found that 77135 gave very poor Ar release patterns, preventing accurate age determination (figure 11). Apparently there has been a young event that has disturbed isotopic system. Stettler et al. (1974, 1975 and 1978) were able to date the matrix and clasts of 77135 by Ar 39/40 release patterns (figures 8, 9 and 10). Nunes et al. (1974) dated clast 1 by Rb-Sr (figure 12), but Nakamura et al. (1976) were unable to date the matrix due to included clasts. Nunes et al. (1974) reported U-Th-Pb data for 77135.

### **Cosmogenic isotopes and exposure ages**

Rancitelli et al. (1994) measured the cosmic-ray-induced activity as  $^{22}\text{Na} = 100 \text{ dpm/kg.}$ ,  $^{26}\text{Al} = 111 \text{ dpm/kg.}$ ,  $^{46}\text{Sc} = 7.2 \text{ dmp/kg.}$ ,  $^{54}\text{Mn} = 21 \text{ dpm/kg.}$ ,  $^{56}\text{Co} = 66 \text{ dpm/kg.}$  and  $^{60}\text{Co} = 3.4 \text{ dpm/kg.}$

Turner and Cadogan (1975) reported an exposure age of 23 m.y., Stettler et al. (1974 and 1977) determined ages of 28.6 and 29.6 m.y. by  $^{37}\text{Ar}$ . Crozaz et al. (1974) and Eberhardt et al. (1975) reported  $^{81}\text{Kr}$  exposure ages of  $28 \pm 3$  and 31.8 m.y. respectively. Eugster et al. (1984) also discussed the exposure age of 77135.

### **Other Studies**

Fechtig et al. (1974) studied the microcraters on the surface of 77135. Adams and Charette (1975) determined the spectral reflectance. Brecher (1975) measured the Mossbauer spectra. Crozaz et al. (1974) reported a “track age” of  $5.4 \pm 0.8 \text{ m.y.}$

The magnetic properties of 77135 have been studied by Cisowski et al. (1983), Nagata (1975), Pierce et al (1974), Brecher (1975, 1977) and Hale et al (1978).

77135 was used to study the residual effect of the 1972 solar flare (Rancitelli et al. 1974, Yokoyama et al. 1974).

Storey et al. (1974) and Ford (1976) have studied 77135 experimentally (it could not have been a liquid below about 1280 deg. C).

### **Processing**

The initial processing and distribution of 77135 is outlined in Butler and Dealing (1974). It was studied by the International Consortium led by Ed Chao (Minkin et al. 1978). Detailed description of the splits is given in USGS open-file report 78-511. The largest piece of 77135 in 2004 weighs 234 grams. There are 34 thin sections.



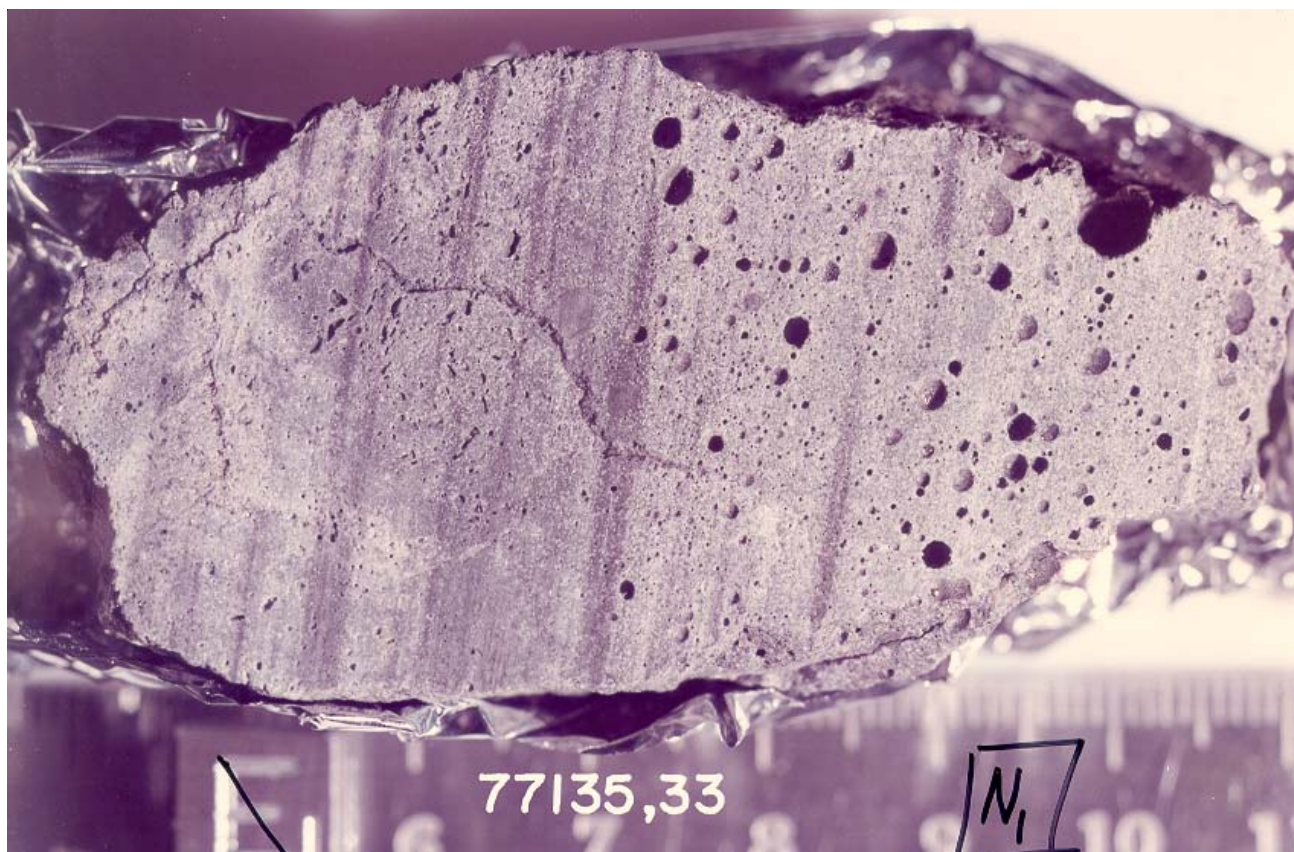
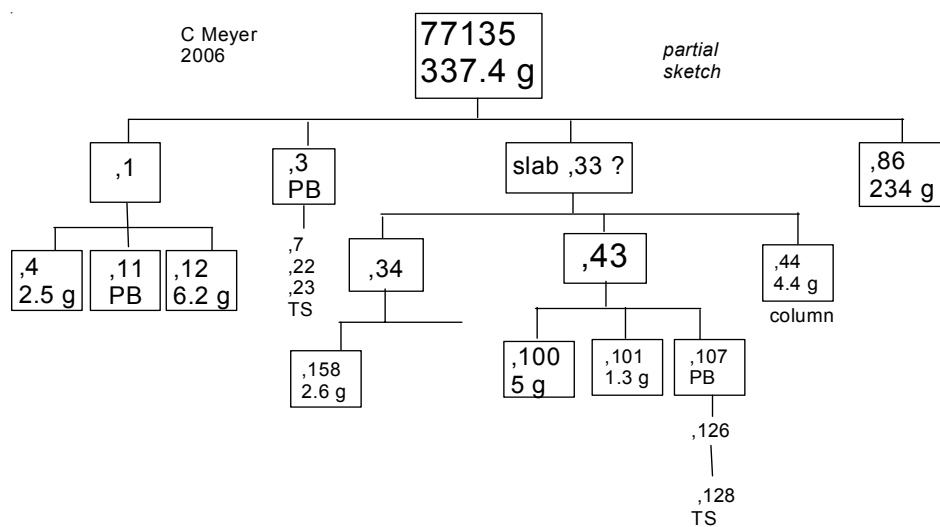


Figure 14: Photo of slab (or end piece) after sawing 77135 showing relic flow banding and vesicularity. NASA S73-34469. Scale in cm.



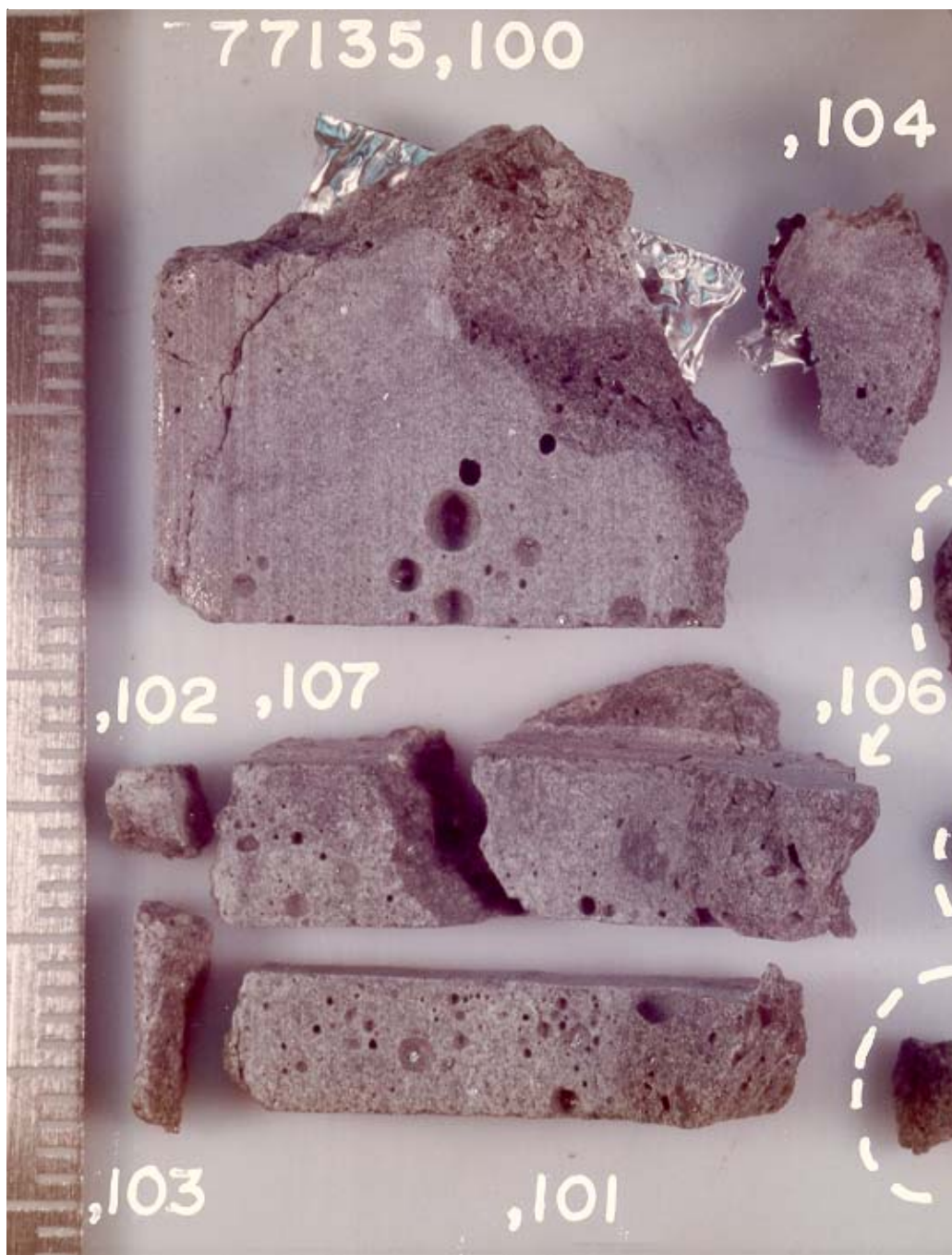


Figure 15: Photo of subdivided slab of 77135,43. NASA S75-21996. Scale is in cm.

#### References for 77135

Adams J.B. and Charette M.P. (1975) Spectral reflectance of highland rock types at Apollo 17: Evidence from Boulder 1, Station 2. *The Moon* **14**, 483-489.

Bence A.E., Papike J.J., Sueno S. and Delano J.W. (1973) Pyroxene poikiloblastic rocks from the lunar highlands. *Proc. 4<sup>th</sup> Lunar Sci. Conf.* 597-611.

Bence A.E., Delano J.W., Papike J.J. and Cameron K.L. (1974) Petrology of the highlands massifs at Taurus-Littrow:

An analysis of the 2-4 mm soil fraction. *Proc. 5<sup>th</sup> Lunar Sci. Conf.* 785-827.

Brecher A. (1974) Inferences from comparative magnetic studies of some Apollo 17 basalts, breccias and soils (abs). *Lunar Sci.* **V**, 83-85. Lunar Planetary Institute, Houston.

Brecher A. (1975) Textural remanence: A new model of lunar rock magnetism (abs). *Lunar Sci.* **VI**, 83-85. Lunar Planetary Institute, Houston.

- Brecher A. (1976a) Textural remanence: A new model of lunar rock magnetism. *Earth Planet. Sci. Lett.* **29**, 131-145.
- Brecher A. (1977a) Interrelationships between magnetization directions, magnetic fabric and oriented petrographic features in lunar rocks. *Proc. 8<sup>th</sup> Lunar Sci. Conf.* 703-723.
- Brecher A., Menke W.H. and Morash K.R. (1974) Comparative magnetic studies of some Apollo 17 rocks and soils and their implications. *Proc. 5<sup>th</sup> Lunar Sci. Conf.* 2795-2814.
- Butler P. (1973) Lunar Sample Information Catalog Apollo 17. Lunar Receiving Laboratory. MSC 03211 Curator's Catalog. pp. 447.
- Butler P. and Dealing T.E. (1974) The dissection and consortium allocation of Apollo 17 lunar rocks from the boulder at Station 7. *Earth Planet. Sci. Lett.* **23**, 429-434.
- Chao E.C.T. and Minkin J.A. (1974a) Preliminary description of Apollo 17 station 7 boulder consortium rocks (abs). *Lunar Sci.* **V**, 109-111. Lunar Planetary Institute, Houston.
- Chao E.C.T. and Minkin J.A. (1974b) The petrogenesis of 77135, a fragment-laden pigeonite feldspathic basalt - a major highland rock type (abs). *Lunar Sci.* **V**, 112-114. Lunar Planetary Institute, Houston.
- Chao E.C.T., Minkin J.A. and Thompson C.L. (1974) Preliminary petrographic description and geologic implications of the Apollo 17 Station 7 Boulder Consortium samples. *Earth Planet. Sci. Lett.* **23**, 413-428.
- Cisowski C.S., Dunn J.R., Fuller M., Rose M.F. and Wasilewski P.J. (1974) Impact processes and lunar magnetism. *Proc. 5<sup>th</sup> Lunar Sci. Conf.* 2841-2858.
- Crozaz G., Drozd R., Hohenberg C., Morgan C., Ralston C., Walker R. and Yuhas D. (1974a) Lunar surface dynamics: Some general conclusions and new results from Apollo 16 and 17. *Proc. 5<sup>th</sup> Lunar Sci. Conf.* 2475-2499.
- Dalrymple G.B. and Ryder G. (1996) <sup>40</sup>Ar/<sup>39</sup>Ar laser step heating ages of some Apollo 17 melt rocks and the age of the Serenitatis impact (abs). *Lunar Planet. Sci.* **XXVII**, 285-286. Lunar Planetary Institute, Houston.
- Dalrymple G.B. and Ryder G. (1996) Argon-40/argon-39 age spectra of Apollo 17 highlands breccia samples by laser step heating and the age of the Serenitatis basin. *J. Geophys. Res.* **101**, 26069-26084.
- Eberhardt P., Eugster O., Geiss J., Graf H., Grögler N., Morgeli M. and Stettler A. (1975a) <sup>81</sup>Kr-Kr exposure ages of some Apollo 14, Apollo 16 and Apollo 17 rocks (abs). *Lunar Sci.* **VI**, 233-235. Lunar Planetary Institute, Houston.
- von Engelhardt W. (1979) Ilmenite in the crystallization sequence of lunar rocks. *Proc. 10<sup>th</sup> Lunar Sci. Conf.* 677-694.
- Fechtig H., Hartung J.B., Nagel K., Neukum G. and Storzer D. (1974a) Lunar microcrater studies, derived meteoroid fluxes, and comparison with satellite-borne experiments. *Proc. 5<sup>th</sup> Lunar Sci. Conf.* 2463-2474.
- Ford C.E., O'Hara M.J. and Spencer P.M. (1977) The origin of lunar feldspathic liquids. *Phil. Trans. Roy. Soc. London* **A285**, 193-198.
- Gibson E.K. and Moore G.W. (1974a) Sulfur abundances and distributions in the valley of Taurus-Littrow. *Proc. 5<sup>th</sup> Lunar Sci. Conf.* 1823-1837.
- Hale C.J., Fuller M. and Bailey R.C. (1978) On the application of microwave heating to lunar paleointensity determination. *Proc. 9<sup>th</sup> Lunar Planet. Sci. Conf.* 3165-3179.
- Higuchi H. and Morgan J.W. (1975a) Ancient meteoritic component in Apollo 17 boulders. *Proc. 6<sup>th</sup> Lunar Sci. Conf.* 1625-1651.
- Higuchi H. and Morgan J.W. (1975b) Ancient meteoritic component in Apollo 17 boulders (abs). *Lunar Sci.* **VI**, 364-366. Lunar Planetary Institute, Houston.
- Hubbard N.J., Rhodes J.M., Wiesmann H., Shih C.Y. and Bansal B.M. (1974) The chemical definition and interpretation of rock types from the non-mare regions of the Moon. *Proc. 5<sup>th</sup> Lunar Sci. Conf.* 1227-1246.
- Lofgren G.E. (1977) Dynamic crystallization experiments bearing on the origin of textures in impact-generated liquids. *Proc. 8<sup>th</sup> Lunar Sci. Conf.* 2079-2095.
- LSPET (1973a) Apollo 17 lunar samples: Chemical and petrographic description. *Science* **182**, 659-690.
- LSPET (1973c) Preliminary examination of lunar samples. Apollo 17 Preliminary Science Report. NASA SP-330, 7-1—7-46.
- McGee J.J., Nord G.L. and Wandless M.-V. (1980a) Comparative thermal histories of matrix from Apollo 17 boulder 7 fragment-laden melt rocks: An analytical transmission electron microscopy study. *Proc. 11<sup>th</sup> Lunar Planet. Sci. Conf.* 611-627.
- McGee J.J., Nord G.L., Jr. and Wandless M.-V. (1980b) Comparative thermal histories of matrix from Apollo 17



boulder 7 fragment-laden melt rocks (abs). *Lunar Planet. Sci.* **XI**, 700-702. Lunar Planetary Institute, Houston.

Meyer C. (1994) Catalog of Apollo 17 rocks: Volume 4. Curator's Office JSC 26088 pp. 644

Minkin J.A., Thompson C.L. and Chao E.C.T. (1978) The Apollo 17 Station 7 boulder: Summary of study by the International Consortium. *Proc. 9<sup>th</sup> Lunar Planet. Sci. Conf.* 877-903.

Minkin J.A., Thompson C.L. and Chao E.C.T. (1987) Allocation of subsamples of Apollo 17 lunar rocks from the boulder at station 7, for study by the International Consortium. Open-file report 78-511. United States Geological Survey.

Morgan J.W., Ganapathy R., Higuchi H., Krahenbuhl U. and Anders E (1974a) Lunar basins: Tentative characterization of projectiles, from meteoritic elements in Apollo 17 boulders. *Proc. 5<sup>th</sup> Lunar Sci. Conf.* 1703-1736.

Morgan J.W., Ganapathy R., Higuchi H., Krahenbuhl U. and Anders E. (1974b) Lunar basins: Tentative characterization of projectiles, from meteoritic elements in Apollo 17 boulders (abs). *Lunar Sci.* **V**, 526-528. Lunar Planetary Institute, Houston.

Morgan J.W., Ganapathy R. and Krahenbuhl U. (1975a) Meteoritic trace elements in lunar rock 14321,184. *Geochim. Cosmochim. Acta* **39**, 261-264.

Morgan J.W., Higuchi H. and Anders E. (1975b) Meteoritic material in a boulder from the Apollo 17 site: Implications for its origin. *The Moon* **14**, 373-383.

Nagata T., Fisher R.M., Schwerer F.C., Fuller M.D. and Dunn J.R. (1975a) Effects of meteorite impact on magnetic properties of Apollo lunar materials. *Proc. 6<sup>th</sup> Lunar Sci. Conf.* 3111-3122.

Nagata T., Fisher R.M., Schwerer F.C., Fuller M.D. and Dunn J.R. (1975b) Basic magnetic properties of Apollo 17 basaltic and anorthositic lunar materials (abs). *Lunar Sci.* **VI**, 584-586. Lunar Planetary Institute, Houston.

Nakamura N. and Tatsumoto M. (1977) The history of the Apollo 17 Station 7 boulder. *Proc. 8<sup>th</sup> Lunar Sci. Conf.* 2301-2314.

Nakamura N., Tatsumoto M., Nunes P.D., Unruh D.M., Schwab A.P. and Wildeman T.R. (1976) 4.4 b.y.-old clast in Boulder 7, Apollo 17: A comprehensive chronological study by U-Pb, Rb-Sr, and Sm-Nd methods. *Proc. 7<sup>th</sup> Lunar Sci. Conf.* 2309-2333.

Norman M.D., Bennett V.C. and Ryder G. (2002) Targeting the impactors: highly siderophile element signatures of lunar impact melts from Serenitatis. *Earth Planet. Sci. Lett.* **202**, 217-228.

Nunes P.D., Tatsumoto M. and Unruh D.M. (1974a) U-Th-Pb and Rb-Sr systematics of Apollo 17 Boulder 7 from the North Massif of the Taurus-Littrow valley. *Earth Planet. Sci. Lett.* **23**, 445-452.

Nunes P.D., Tatsumoto M. and Unruh D.M. (1974b) U-Th-Pb systematics of some Apollo 17 lunar samples and implications for a lunar basin excavation chronology. *Proc. 5<sup>th</sup> Lunar Sci. Conf.* 1487-1514.

Nunes P.D., Tasumoto M. and Unruh D.M. (1974c) U-Th-Pb systematics of some Apollo 17 samples (abs). *Lunar Sci.* **V**, 562-564. Lunar Planetary Institute, Houston

Onorato P.I.K., Uhlmann D.R. and Simonds C.H. (1976) Heat flow in impact melts: Apollo 17 Station 6 Boulder and some applications to other breccias and xenolith laden melts. *Proc. 7<sup>th</sup> Lunar Sci. Conf.* 2449-2467.

Pearce G.W., Strangway D.W. and Gose W.A. (1974a) Magnetic properties of Apollo samples and implications for regolith formation. *Proc. 5<sup>th</sup> Lunar Sci. Conf.* 2815-2826.

Pearce G.W., Gose W.A. and Strangway D.W. (1974b) Magnetism of the Apollo 17 samples (abs). *Lunar Sci.* **V**, 590-592. Lunar Planetary Institute, Houston.

Rancitelli L.A., Perkins R.W., Felix W.D. and Wogman N.A. (1973a) Preliminary analysis of cosmogenic and primordial radionuclides in Apollo 17 samples (abs). *Lunar Sci.* **IV**, 612-614. Lunar Planetary Institute, Houston.

Rancitelli L.A., Perkins R.W., Felix W.D. and Wogman N.A. (1974a) Solar flare and lunar surface process characterization at the Apollo 17 site. *Proc. 5<sup>th</sup> Lunar Sci. Conf.* 2185-2203.

Rhodes J.M., Rodgers K.V., Shih C., Bansal B.M., Nyquist L.E., Wiesmann H. and Hubbard N.J. (1974a) The relationships between geology and soil chemistry at the Apollo 17 landing site. *Proc. 5<sup>th</sup> Lunar Sci. Conf.* 1097-1117.

Rhodes J.M., Rodgers K.V., Shih C., Bansal B.M., Nyquist L.E. Wiesmann H. (1974b) The relationship between geology and soil chemistry at the Apollo 17 landing site (abs). *Lunar Sci.* **V**, 630-632. Lunar Planetary Institute, Houston.

Ryder G. (1992b) Lunar highlands totality from bits and pieces: A whole-rock-chemistry-free characterization of an evolved hypabyssal igneous gabbro schlieren from the Apollo

17 landing site (abs). *Lunar Planet. Sci.* **XXIII**, 1195-1196. Lunar Planetary Institute, Houston.

Simonds C.H. (1975) Thermal regimes in impact melts and the petrology of the Apollo 17 Station 6 boulder. *Proc. 6<sup>th</sup> Lunar Sci. Conf.* 641-672.

Smith J.V., Hansen E.C. and Steele I.M. (1980) Lunar highland rocks: Element partitioning among minerals II: Electron microprobe analyses of Al, P, Ca, Ti, Cr, Mn and Fe in olivine. *Proc. 11<sup>th</sup> Lunar Planet. Sci. Conf.* 555-569.

Steele I.M., Hutcheon I.D. and Smith J.V. (1980) Ion microprobe analysis and petrogenetic interpretations of Li, Mg, Ti, K, Sr, Ba in lunar plagioclase. *Proc. 11<sup>th</sup> Lunar Planet. Sci. Conf.* 571-590.

Stettler A., Eberhardt P., Geiss J. and Grogler N. (1974) <sup>39</sup>Ar-<sup>40</sup>Ar ages of samples from the Apollo 17 Station 7 boulder and implications for its formation. *Earth Planet. Sci. Lett.* **23**, 453-461.

Stettler A., Eberhardt P., Geiss J., Grogler N. and Guggisberg S. (1975) Age sequence in the Apollo 17 Station 7 boulder (abs). *Lunar Sci.* **VI**, 771-773. Lunar Planetary Institute, Houston.

Stettler A., Eberhardt P., Geiss J., Grogler N. and Guggisberg S. (1978) Chronology of the Apollo 17 Station 7 Boulder and the South Serenitatis impact (abs). *Lunar Planet. Sci.* **IX**, 1113-1115. Lunar Planetary Institute, Houston.

Storey W.C., Humphries D.J. and O'Hara M.J. (1974) Experimental petrology of sample 77135. *Earth Planet. Sci. Lett.* **23**, 435-438.

Tatsumoto M., Nunes P.D., Knight R.J. and Unruh D.M. (1974) Rb-Sr and U-Th-Pb systematics of boulders 1 and 7, Apollo 17 (abs). *Lunar Sci.* **V**, 774-776. Lunar Planetary Institute, Houston.

Turner G. and Cadogan P.H. (1975b) The history of lunar basin formation inferred from <sup>40</sup>Ar-<sup>39</sup>Ar dating of highland rocks (abs). *Lunar Sci.* **VI**, 826-828. Lunar Planetary Institute, Houston.

Vaniman D.T. and Papike J.J. (1978) The lunar highland melt-rock suite. *Geophys. Res. Lett.* **5**, 429-432.

Warner J.L., Simonds C.H., Phinney W.C. and Gooley R. (1973a) Petrology and genesis of two "igneous" rocks from Apollo 17 (76055 and 77135) (abs). *EOS Trans. AGU* **54**, 620-621.

Wiesmann H. and Hubbard N.J. (1975) A compilation of the Lunar Sample Data Generated by the Gast, Nyquist and Hubbard Lunar Sample PI-Ships. Unpublished. JSC

Winzer S.R., Nava D.F., Schuhmann S., Kouns C.W., Lum R.K.L. and Philpotts J.A. (1974) Major, minor and trace element abundances in samples from the Apollo 17 Station 7 boulder: Implications for the origin of early lunar crustal rocks. *Earth Planet. Sci. Lett.* **23**, 439-444.

Winzer S.R., Nava D.F., Schuhmann S., Lum R.K.L. and Philpotts J.A. (1975a) Origin of the Station 7 boulder: A note. *Proc. 6<sup>th</sup> Lunar Sci. Conf.* 707-710.

Winzer S.R., Nava D.F., Schuhmarm P.J., Schuhmann S., Lindstrom M.M., Lum R.K.L., Lindstrom D.J. and Philpotts J.A. (1976) Origin of melts, breccias and rocks from the Apollo 17 landing site (abs). *Lunar Sci.* **VII**, 941-943. Lunar Planetary Institute, Houston.

Winzer S.R., Nava D.F., Schuhmann P.J., Lum R.K.L., Schuhmann S., Lindstrom M.M., Lindstrom D.J. and Philpotts J.A. (1977b) The Apollo 17 "melt sheet": Chemistry, age, and Rb/Sr systematics. *Earth Planet. Sci. Lett.* **33**, 389-400.

Wolfe E.W., Bailey N.G., Lucchitta B.K., Muehlberger W.R., Scott D.H., Sutton R.L. and Wilshire H.G. (1981) The geologic investigation of the Taurus-Littrow Valley: Apollo 17 Landing Site. US Geol. Survey Prof. Paper, 1080, pp. 280.

Yokoyama Y., Reyss J.L. and Guichard F. (1974) <sup>22</sup>Na-<sup>26</sup>Al chronology of lunar surface processes. *Proc. 5<sup>th</sup> Lunar Sci. Conf.* 2231-2247.