

INTRODUCTION: 63568 is a cindery gray glass containing gray crystalline clasts (Fig. 1). At least one of the clasts is an impact melt. The glass is devitrified. 63568 is a rake sample.

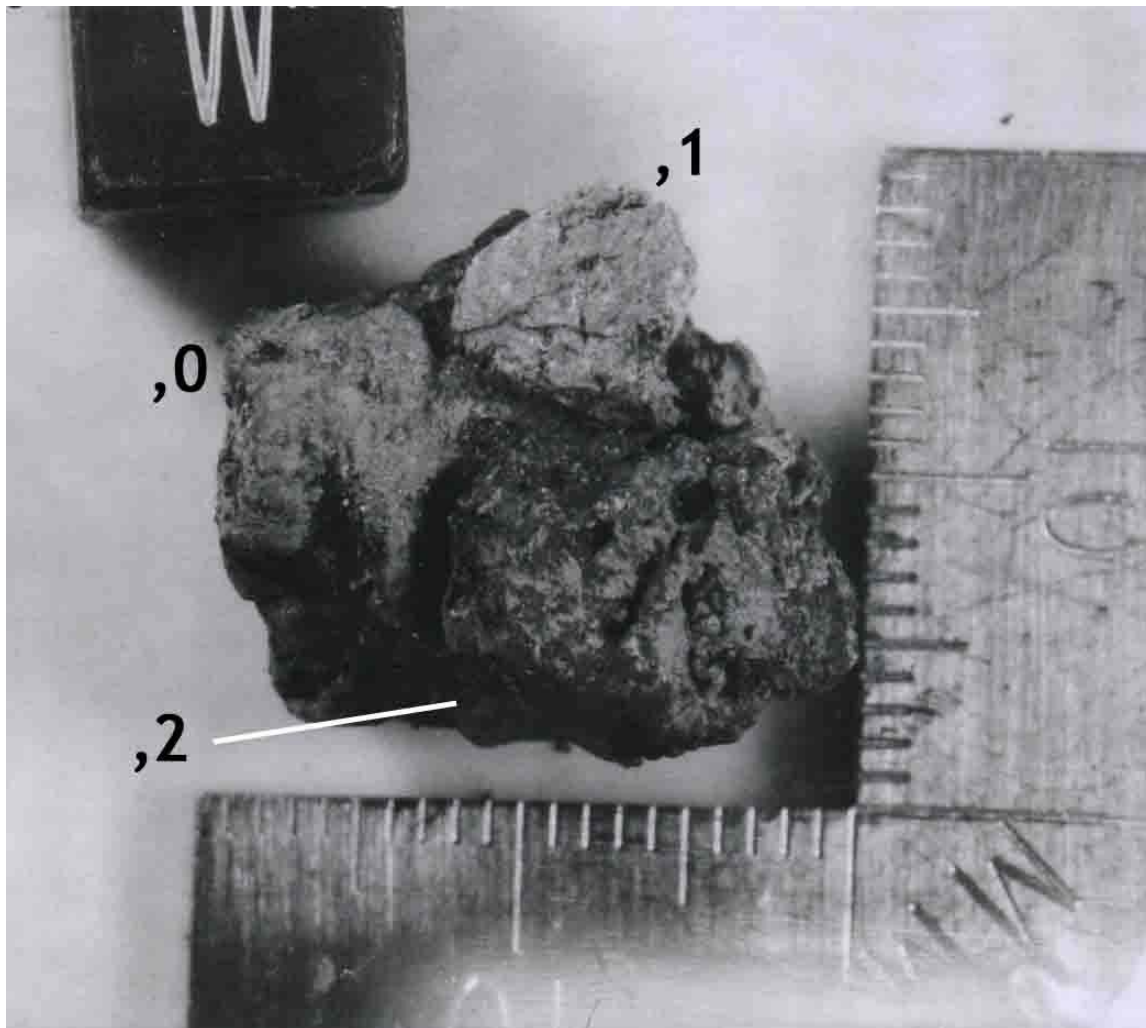


FIGURE 1. Smallest scale division in mm.

PETROLOGY: The groundmass of 63568 is a brown, vesicular, devitrified glass (Fig. 2). Dusty debris is welded to its exterior. The sampled clast (,1 in Figure 1) is a fine-grained impact melt (Fig. 2) with a texture which varies from micropoikilitic to subophitic to intergranular to variolitic. It is cut by brownish-red glass veins generally about 30 μm thick but thicker in some places.

PROCESSING AND SUBDIVISIONS: Four chips (,1) were taken from the gray clast and made into thin sections ,6 and ,7. A single chip of glass (,2) was made into thin sections ,8 and ,9.

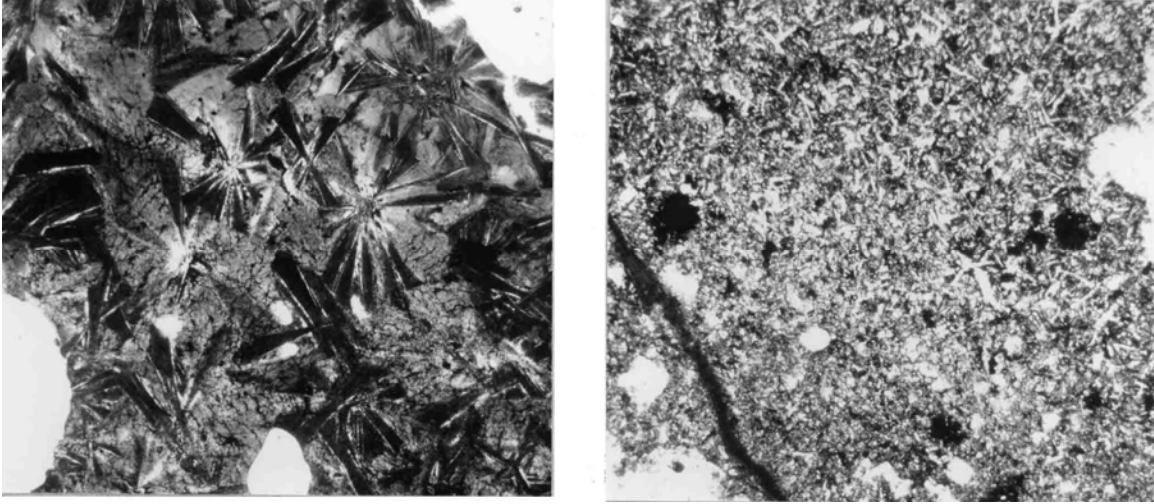


FIGURE 2. a) 63568,8, matrix, ppl. Width 2 mm.
b) 63568,3, clast, ppl. Width 2 mm.