

INTRODUCTION: 63576 is a vesicular dark glass with white clasts (Fig. 1). It is a rake sample.

PETROLOGY: 63576 is a vesicular glass which is clear in patches but partly devitrified (Fig. 2). The white clast sampled is a plagioclase-rich breccia (Fig. 2) with unshocked, angular plagioclase fragments. The clast contains glass balls, chondules and brown glassy vesicular breccias, and is not porous but probably sintered or glass-bonded.

PROCESSING AND SUBDIVISIONS: Two chips, both consisting of glass and the white clast prominent to the left in Figure 1, were potted together as ,1 and thin sections ,3 and ,4 cut from them.

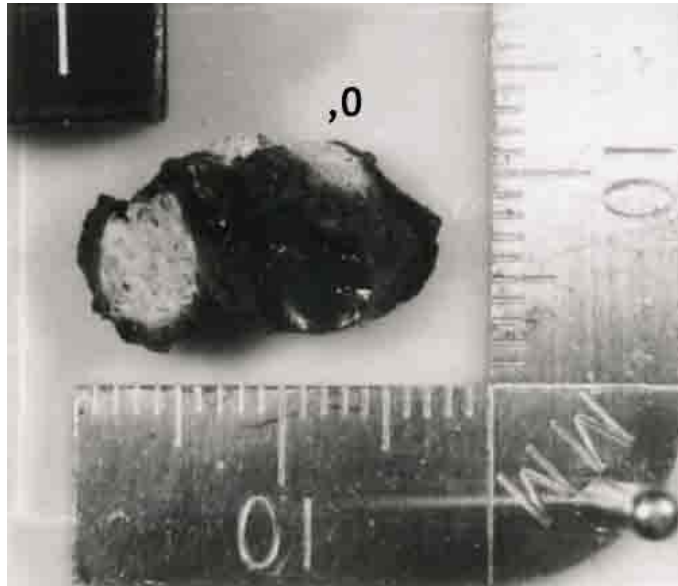


FIGURE 1. Smallest scale division in mm.

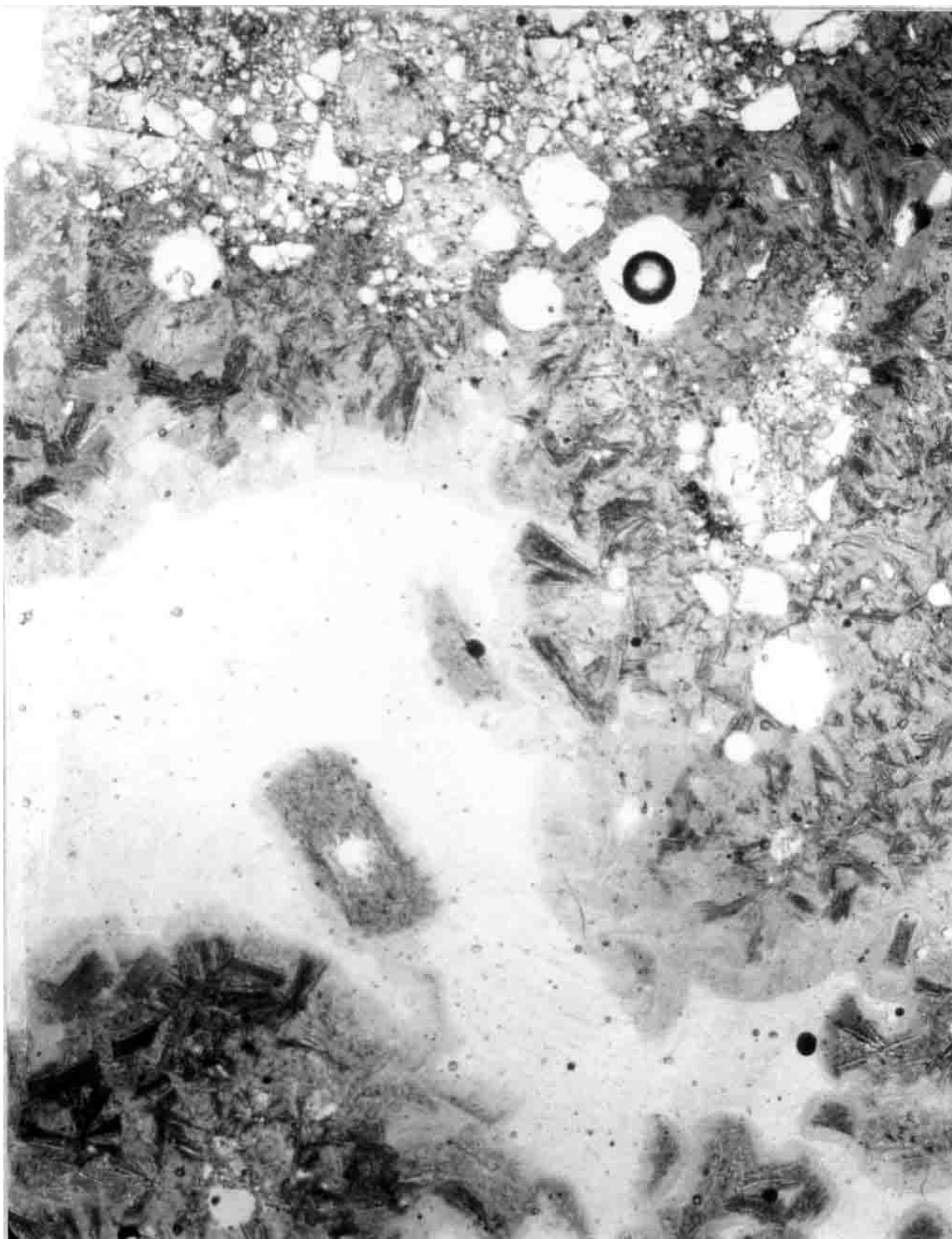


FIGURE 2. 63575,4, general view, ppl. Width 2 mm.