

65529 FRAGMENTAL POLYMICT BRECCIA (REGOLITH BRECCIA?) 2.56 g

INTRODUCTION: 65529 is a pale brown, very friable soil clod with several small glass beads and one glass spherule ~4 mm in diameter (Fig. 1). This rock is a rake sample. Zap pits are absent.

PETROLOGY: The large glass spherule was extracted and found to be a teardrop shaped bead. Warner et al. (1976b) examined a thin section of this bead and found a few vesicles (Fig. 2).

PROCESSING AND SUBDIVISIONS: In 1973 the rock was split and the large glass bead extracted as ,1 (0.03 g) for a thin section.



FIGURE 1. Aluminum cup bottom is 2 inches in diameter. S-72-43351.

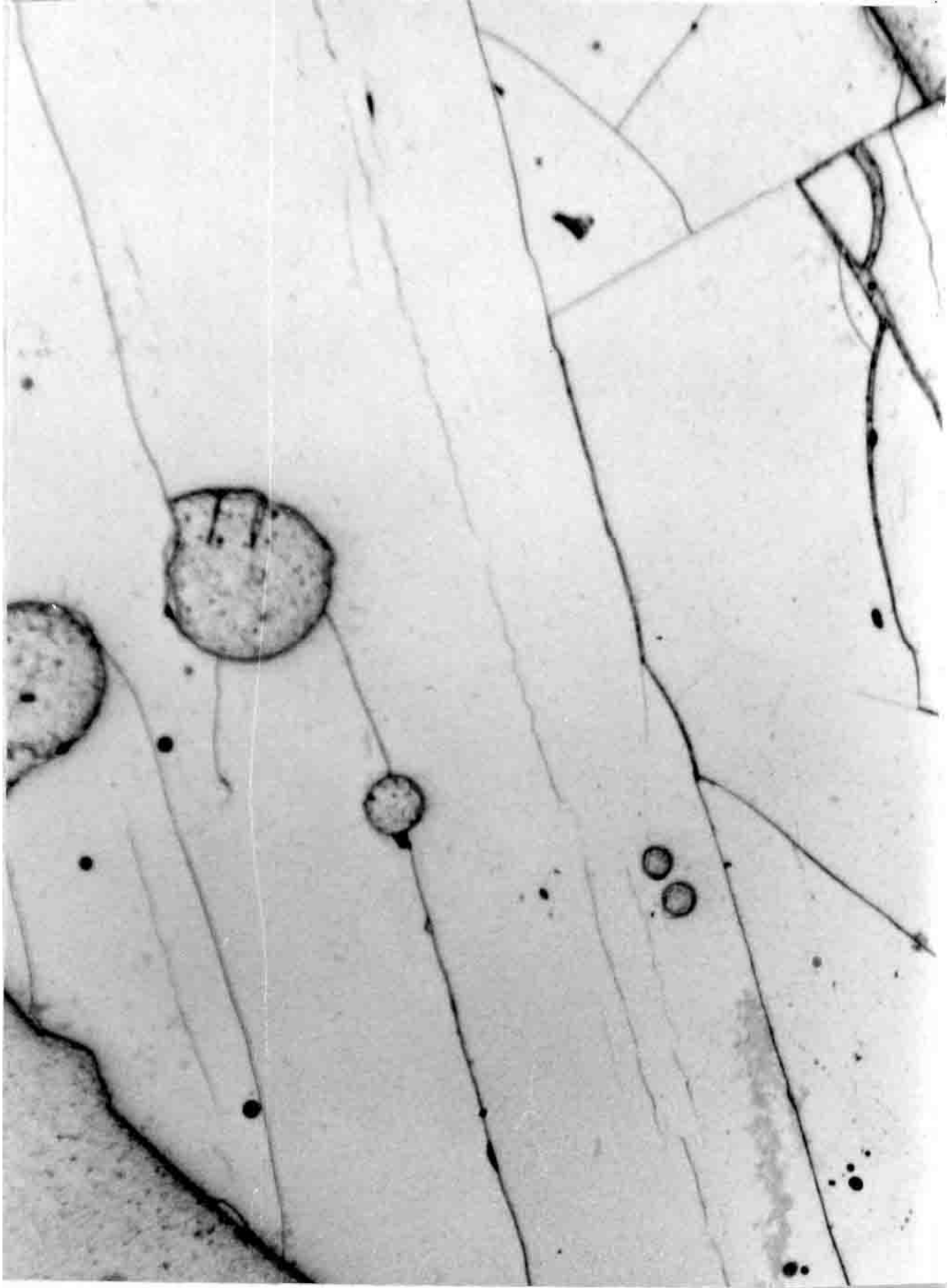


FIGURE 2. General view, ppl. Width about 2 mm.