

65748

65748 FRAGMENTAL POLYMICT BRECCIA (REGOLITH BRECCIA?) 0.97 g

INTRODUCTION: 65748 is a light brownish gray, friable breccia collected as a rake sample (Fig. 1). White, anorthositic clasts and gray, crystalline fragments are common. It is subrounded with rare zap pits.

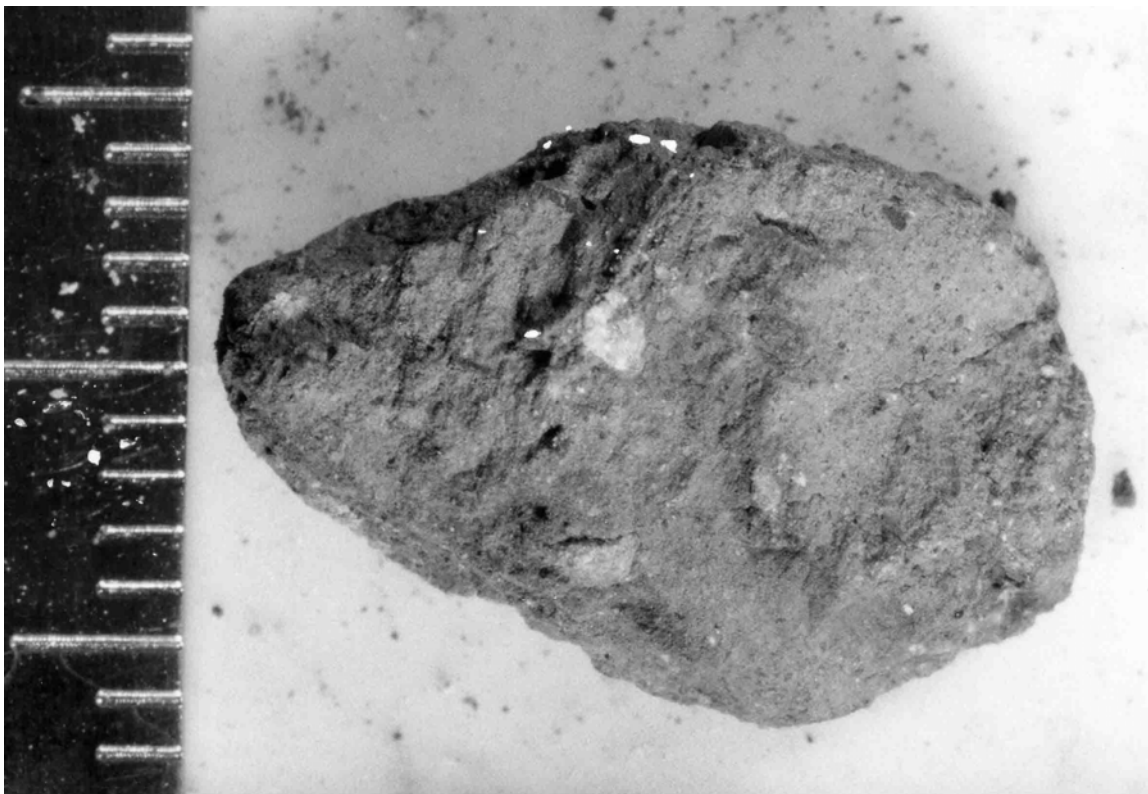


FIGURE 1. Smallest scale division in mm.