

INTRODUCTION: 67529 is a white, monomict, cataclastic anorthosite which is fairly coherent (Fig. 1). It is a rake sample from near the White Breccia boulders. It is subangular and lacks zap pits.

PETROLOGY: 67529 consists of a monomict, cataclastic anorthosite (Fig. 2) with only rare mafic grains, probably low-Ca pyroxenes. Opaque minerals are extremely rare. The texture is variable, ranging from very finely ground shear zones to shocked and fractured regions (Fig. 2). Most of the finely ground regions are porous, whereas the remainder is not porous.



FIGURE 1. Smallest scale division in mm. S-72-51043.

PROCESSING AND SUBDIVISIONS: Small fragments from which thin section ,1 was made were chipped from the sample.

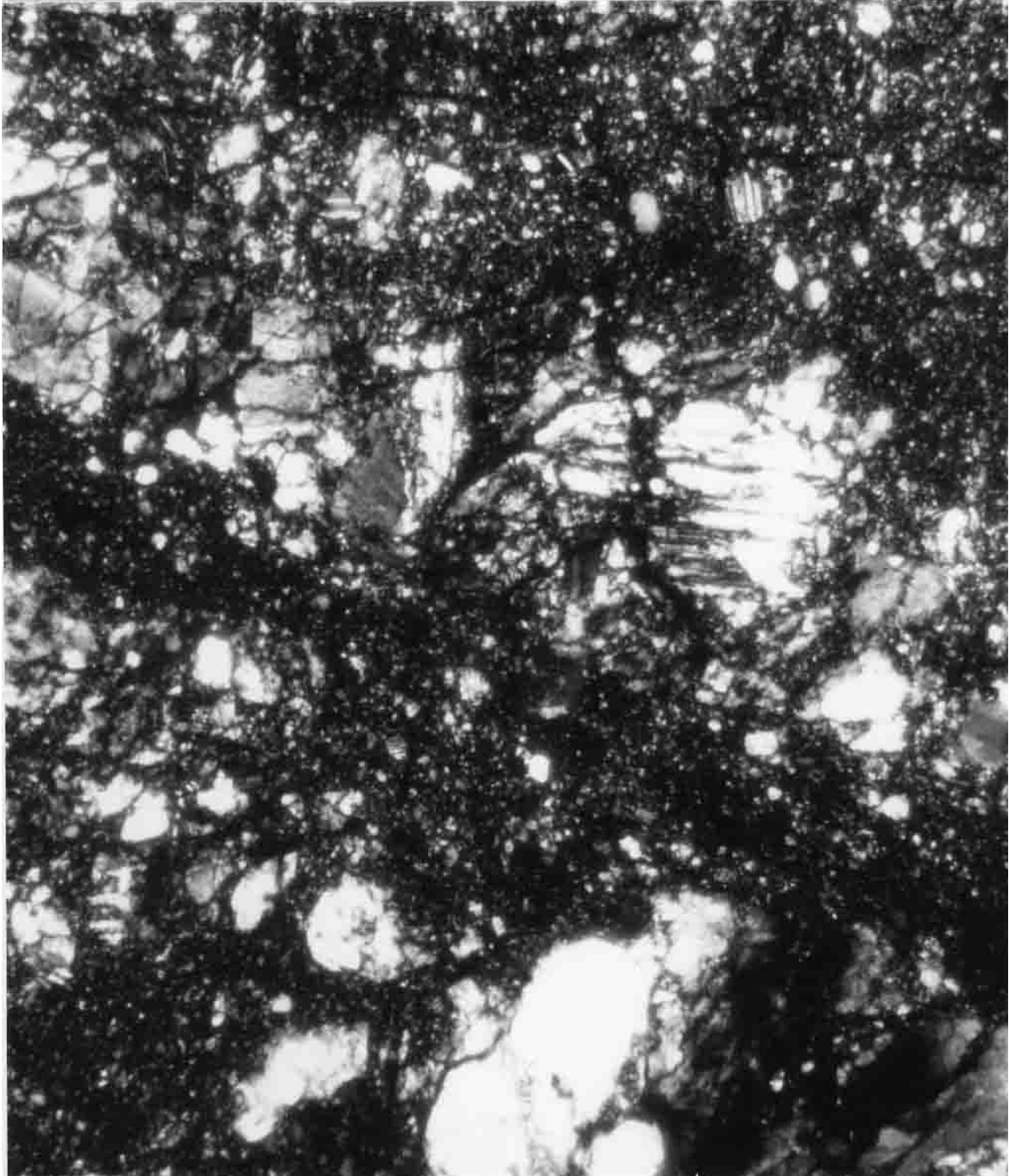


FIGURE 2. 67529,1. General view, xpl. Width 2 mm.