

INTRODUCTION: 67537 is a monomict, white, cataclastic anorthosite (Fig. 1). It is a rake sample collected near the White Breccia boulders. It is homogeneous, moderately friable, and lacks zap pits.



FIGURE 1. Smallest scale division in mm. S-72-49573.

PETROLOGY: The sample consists of large plagioclase clasts in a finer-grained plagioclase matrix (Fig. 2) which contains few mafic mineral grains (<5%). All the large plagioclase clasts are strained or have offset fractures and twins. The mafic phases are localized as if crushed from original larger grains.

PROCESSING AND SUBDIVISIONS: Chipping to produce material for thin section, 1 produced some small chips and fines.

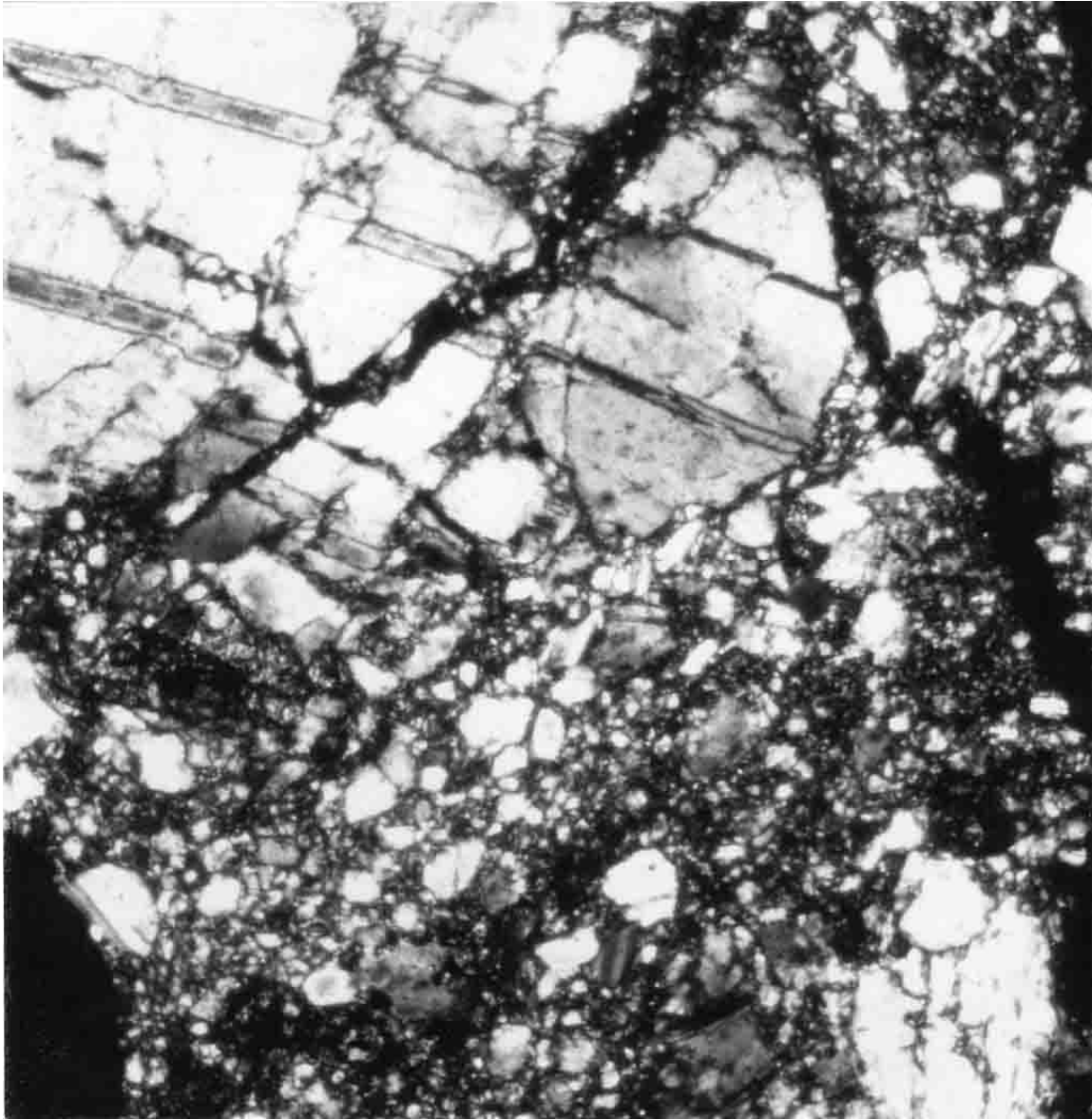


FIGURE 2. 67537,1. General view, xpl. Width 2 mm.