

INTRODUCTION: 67705 is a cindery, crumbly, dark glassy breccia with white clasts (Fig. 1). It was taken from the regolith sample collected halfway between the White Breccia boulders and House Rock.

PETROLOGY: 67705 is a brown, vesicular, devitrified glass with spherulitic and “bow-tie” structures (Fig. 2). It contains lithic and mineral clasts; the former are mainly plagioclase breccias but include a subophitic impact melt fragment which has shock glass, sometimes yellow, at its grain boundaries.

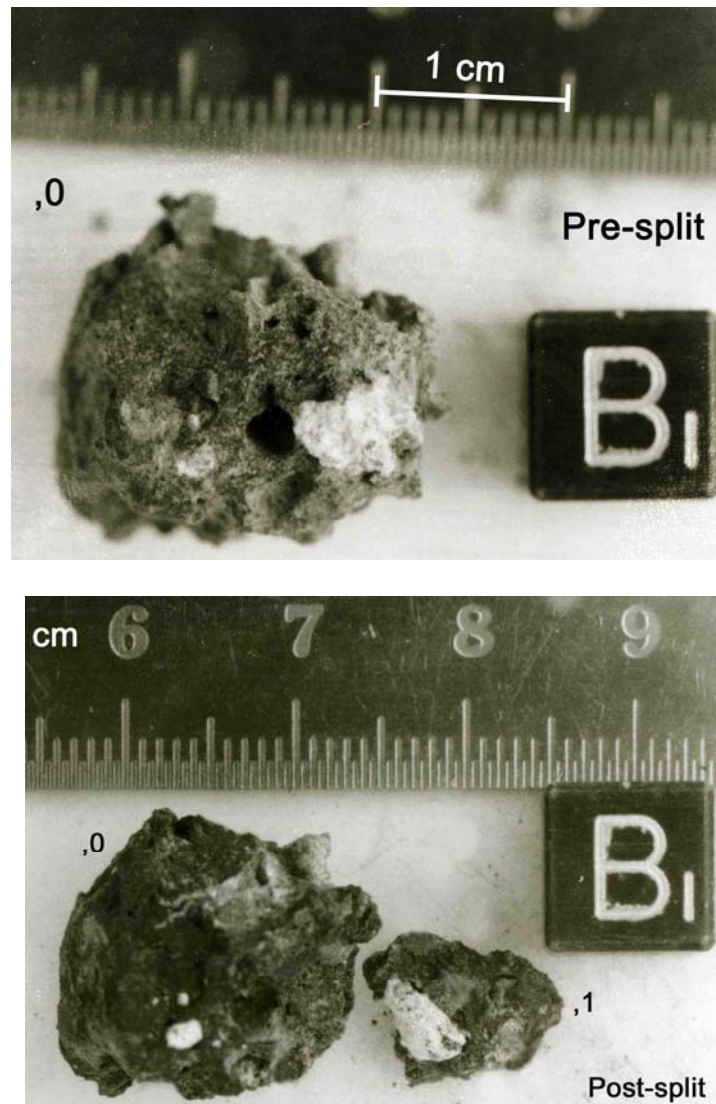


FIGURE 1.

PROCESSING AND SUBDIVISIONS: A single chip ,1 was taken (Fig. 1) to make thin sections ,5 ,6 and ,7. It was a representative chip with a large white clast.



FIGURE 2. 67705,5. General view, ppl. Width 2 mm.