

**INTRODUCTION:** 67715 is dark, coherent, fine-grained impact melt with abundant clasts (Fig. 1). Macroscopically it is homogeneous. It is a rake sample collected halfway between the White Breccia boulders and House Rock. It lacks zap pits but has a small amount of white coating.

**PETROLOGY:** 67715 consists of a microscopically heterogeneous, brown polymict breccia (Fig. 2). The matrix is fine-grained and even glassy, but contains plagioclase laths in places. Most of the lithic clasts are aphanitic impact melts which are difficult to distinguish from the matrix. Cataclastic anorthosite and fine-grained, plagioclase-rich breccia are also present as clasts. Most mineral fragments are angular, undeformed plagioclase.

**PROCESSING AND SUBDIVISIONS:** Only chips for thin section ,1 have been removed.

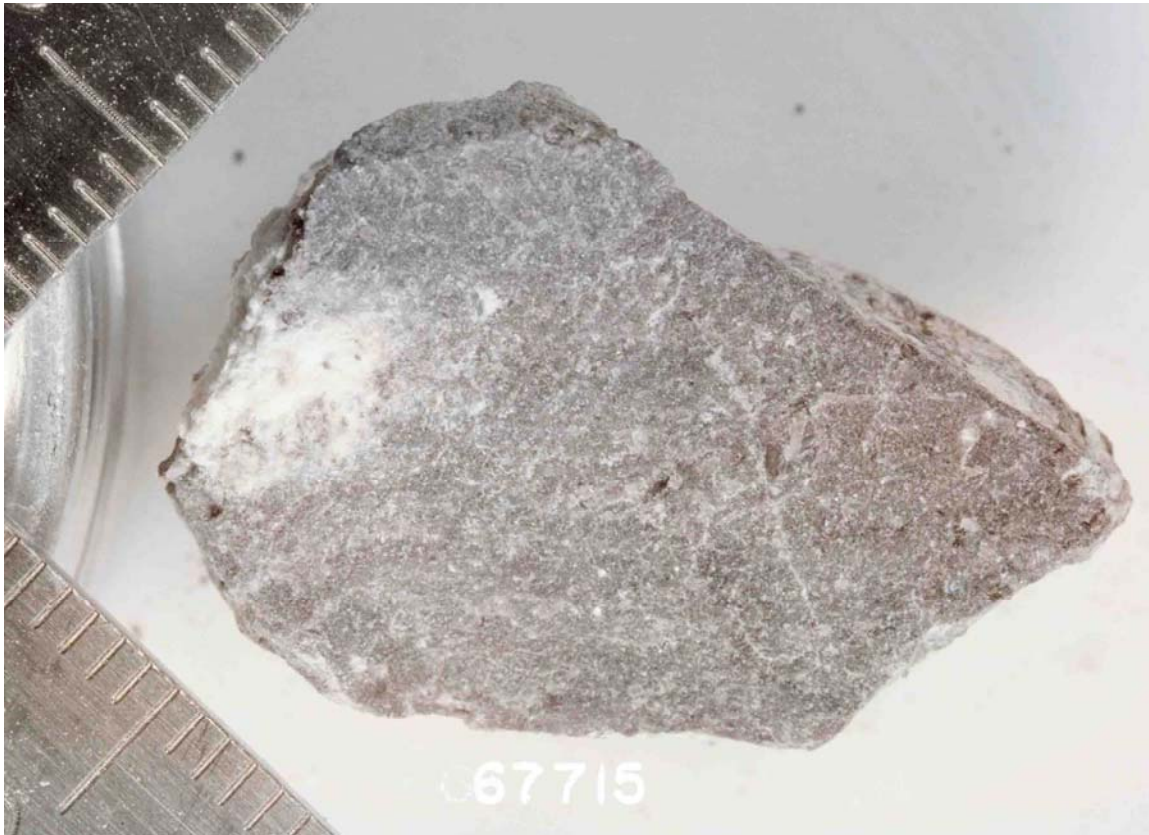


FIGURE 1. Smallest scale division in mm. S-72-51251.

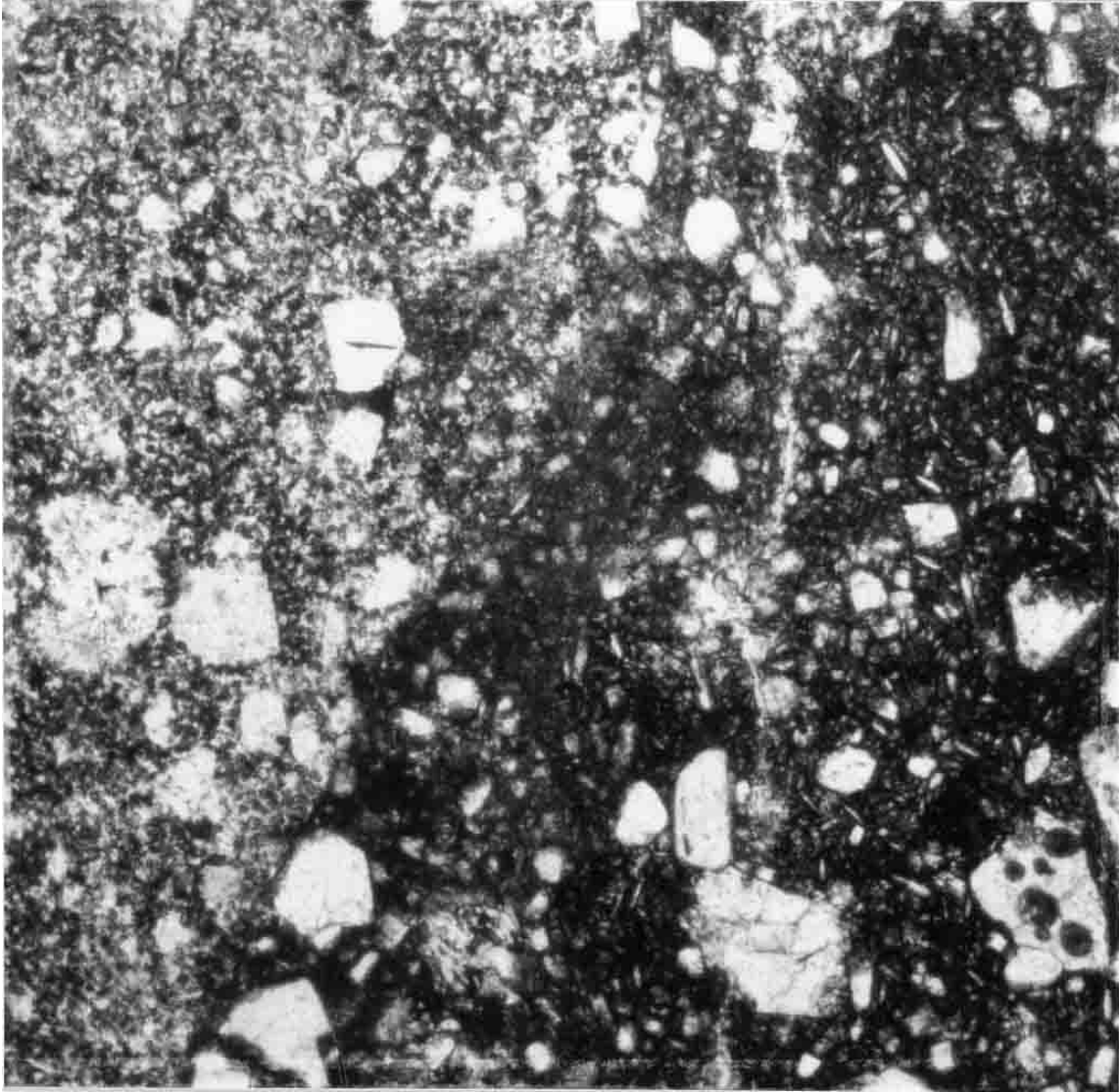


FIGURE 2. 67715,1. General view, ppl. Width 2 mm.