

INTRODUCTION: 67735 is a coherent, fine-grained breccia (Fig. 1) with a brown glassy or cryptocrystalline matrix. It has a coating of varied character. It is a rake sample collected halfway between the White Breccia boulders and House Rock, and lacks zap pits.

PETROLOGY: Steele and Smith (1973) refer to 67735 as a “soil breccia; some layering present.” 67735 has a brown-glassy or cryptocrystalline matrix enclosing fragments of plagioclase which are rounded on the corners (Fig. 2). Some roughly defined banding is caused by color and grain-size differences, but the breccia matrix probably resulted from a single impact in that it is not patchily bound like an agglomeration such as regolith. The clasts are not shocked. Some crushed lithic fragments, including aphanitic breccias and crushed granulites (or other coarse feldspathic rocks), are present.

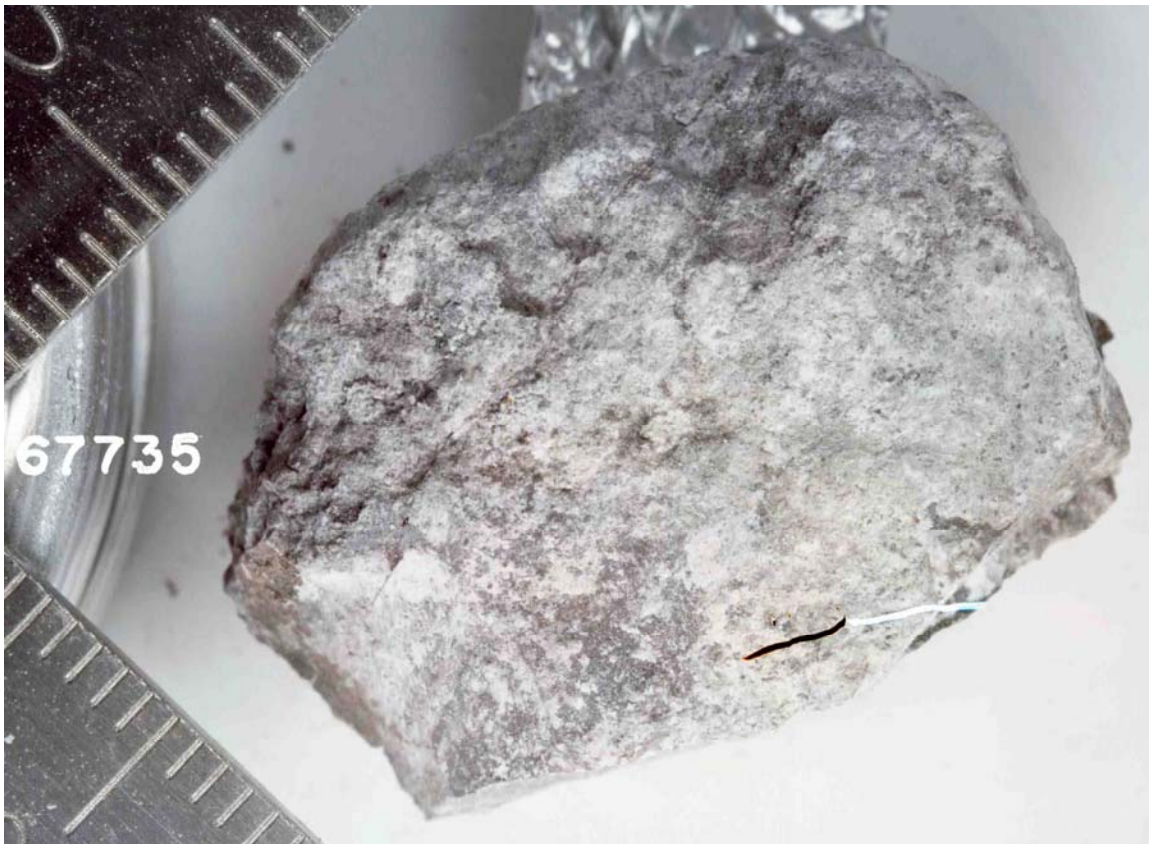


FIGURE 1. Smallest scale division in mm. S-72-51258.

PROCESSING AND SUBDIVISIONS: A chip from one end was divided into two pieces to make thin sections ,13 and ,14 (potted butt ,1) and ,15 (a second potted butt).

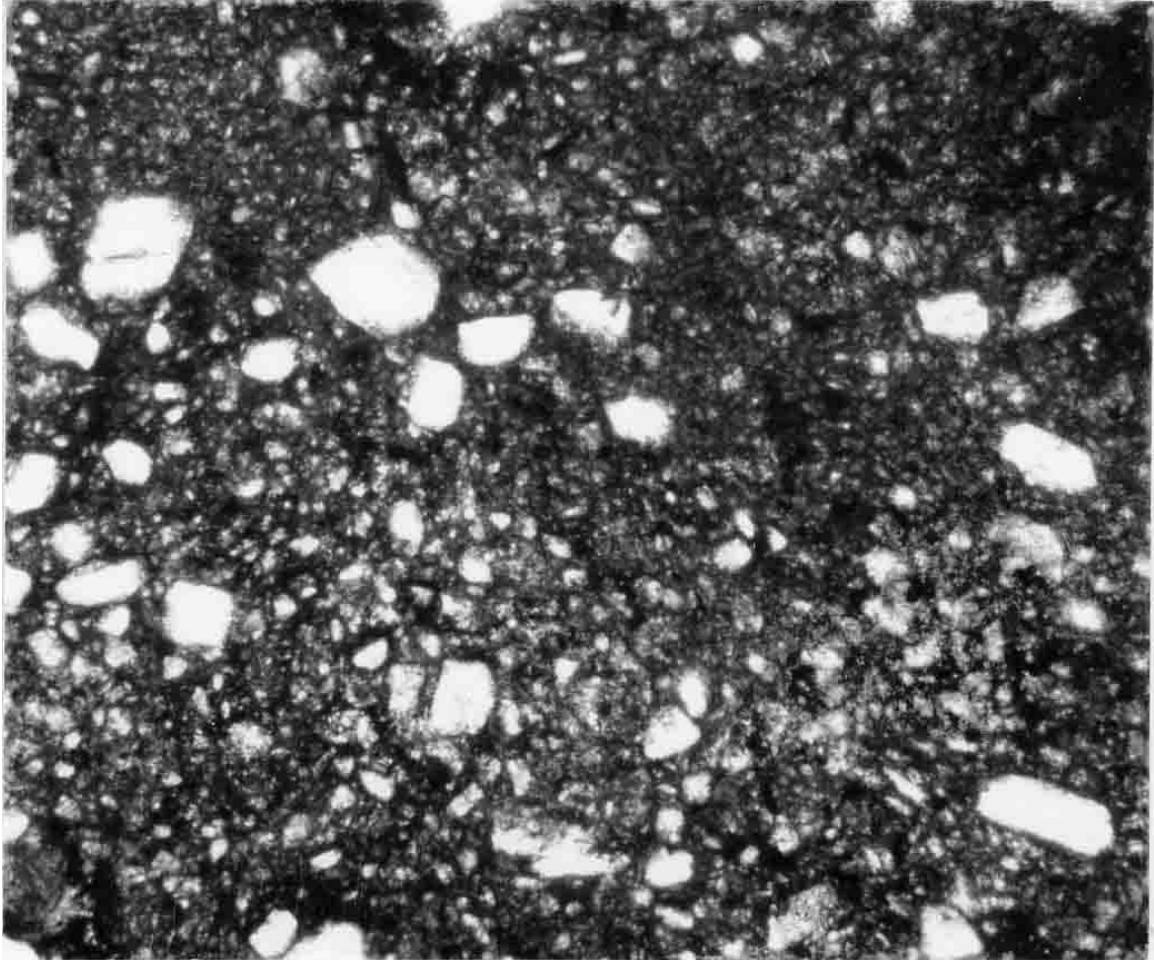


FIGURE 2. 67735,15. General view, ppl. Width 2 mm.