

INTRODUCTION: 67745 is a coherent, fine-grained breccia (Fig. 1) whose matrix appears to be glassy or fine-grained impact melt. It is a rake sample collected halfway between the White Breccia boulders and House Rock. It lacks zap pits.

PETROLOGY: 67745 is a homogeneous, fine-grained polymict breccia (Fig. 2). Its matrix consists of tiny plagioclase clasts bound by an extremely fine-grained mortar of glass or melt; some plagioclase laths are present. Most clasts are plagioclase with a few larger than 200  $\mu\text{m}$ , usually unshocked. There are very few mafic clasts. One 100  $\mu\text{m}$ -diameter feldspathic granulite clast is present in thin section ,1. In some cases, the clast boundaries are indistinct or ragged.

PROCESSING AND SUBDIVISIONS: A single chip was taken to make thin section ,1.



FIGURE 1. Smallest scale division in mm. S-72-51256.

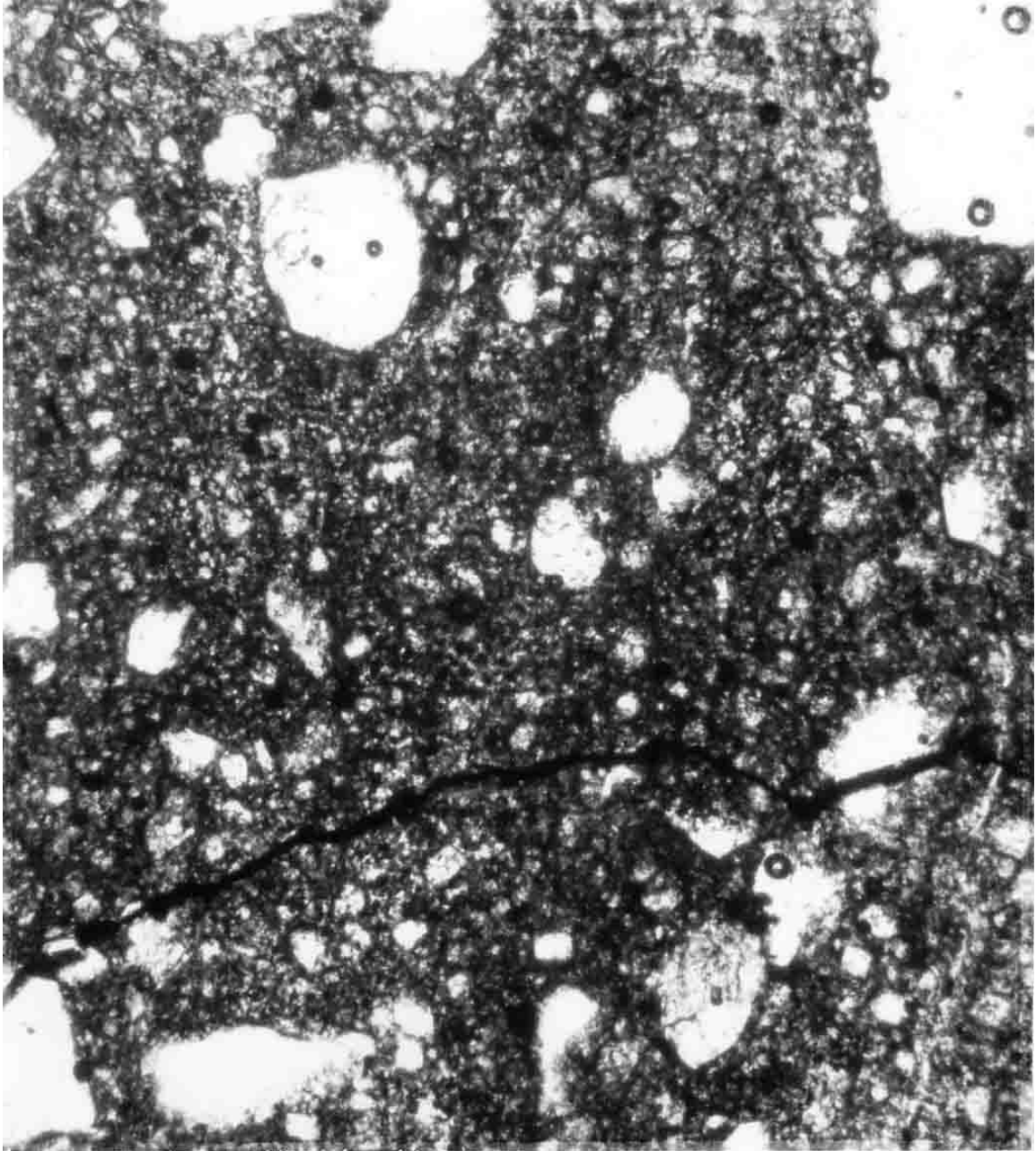


FIGURE 2. 67745,1. General view, ppl. Width 2 mm.