

INTRODUCTION: 68505 is a coherent, dark gray, poikilitic impact melt (Fig. 1). Vugs are common. This rock was taken from a soil sample in the vicinity of a visible ray from South Ray crater. A few zap pits are present on one surface.

PETROLOGY: 68505 is a fine-grained, poikilitic impact melt (Fig. 2). Clasts of plagioclase and more rarely, mafic silicates are present. Blebs of Fe-metal (some rusty) with associated troilite occur as clasts and in interstices with laths of ilmenite. Oikocrysts are generally <0.2 mm.

PROCESSING AND SUBDIVISIONS: In 1973 a chip (,1) was removed for thin sections.



FIGURE 1. S-72-40520.

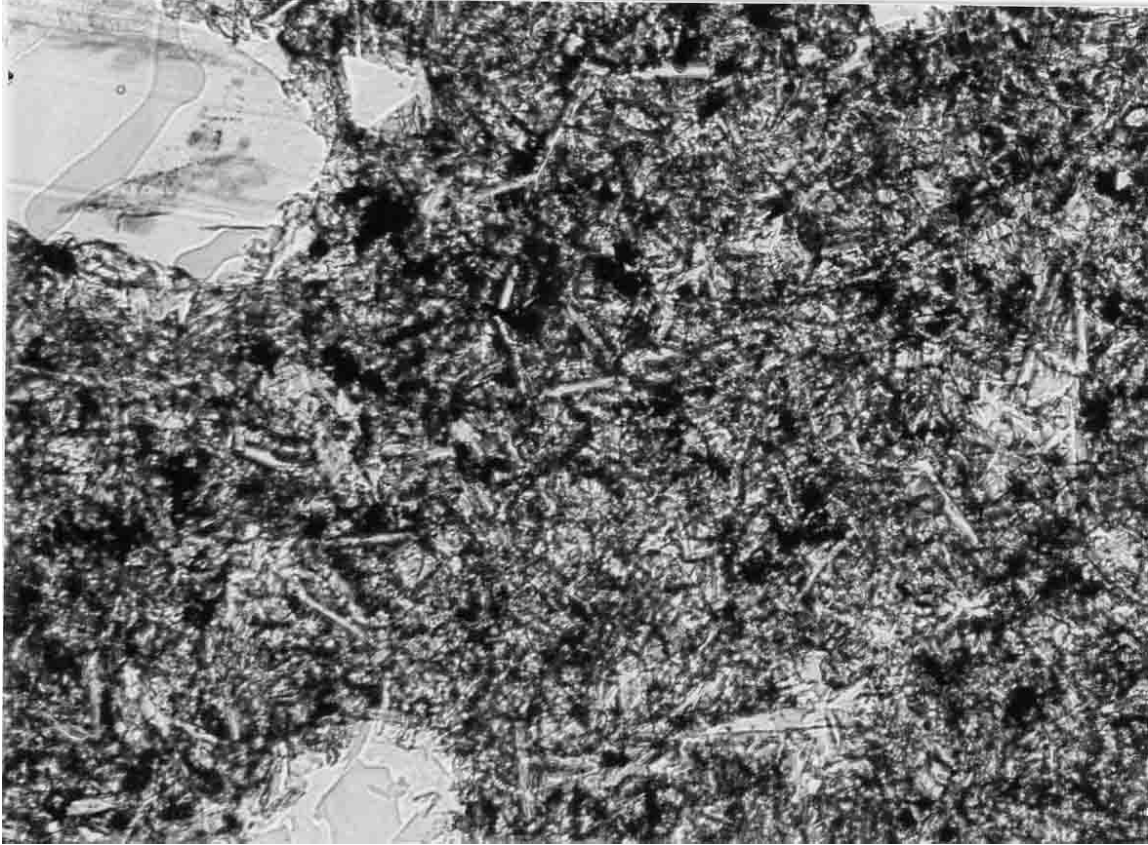


FIGURE 2. 68505,7, ppl. Width 0.5 mm.