

INTRODUCTION: 68529 is a coherent, cindery, dark glass with some vesicles, and containing a few white clasts (Fig. 1). It is a rake sample and has a few zap pits on one corner.

PETROLOGY: 68529 consists mainly of brown, opaque glass which is patchy and irregular and contains some Fe-metal. Thin section ,1 is atypical in containing one of the conspicuous white clasts, which is a shocked and sheared plagioclase or cataclastic anorthosite.

PROCESSING AND SUBDIVISIONS: Some small chips, atypically containing a white clast as well as dark glass, were taken to make thin section ,1.

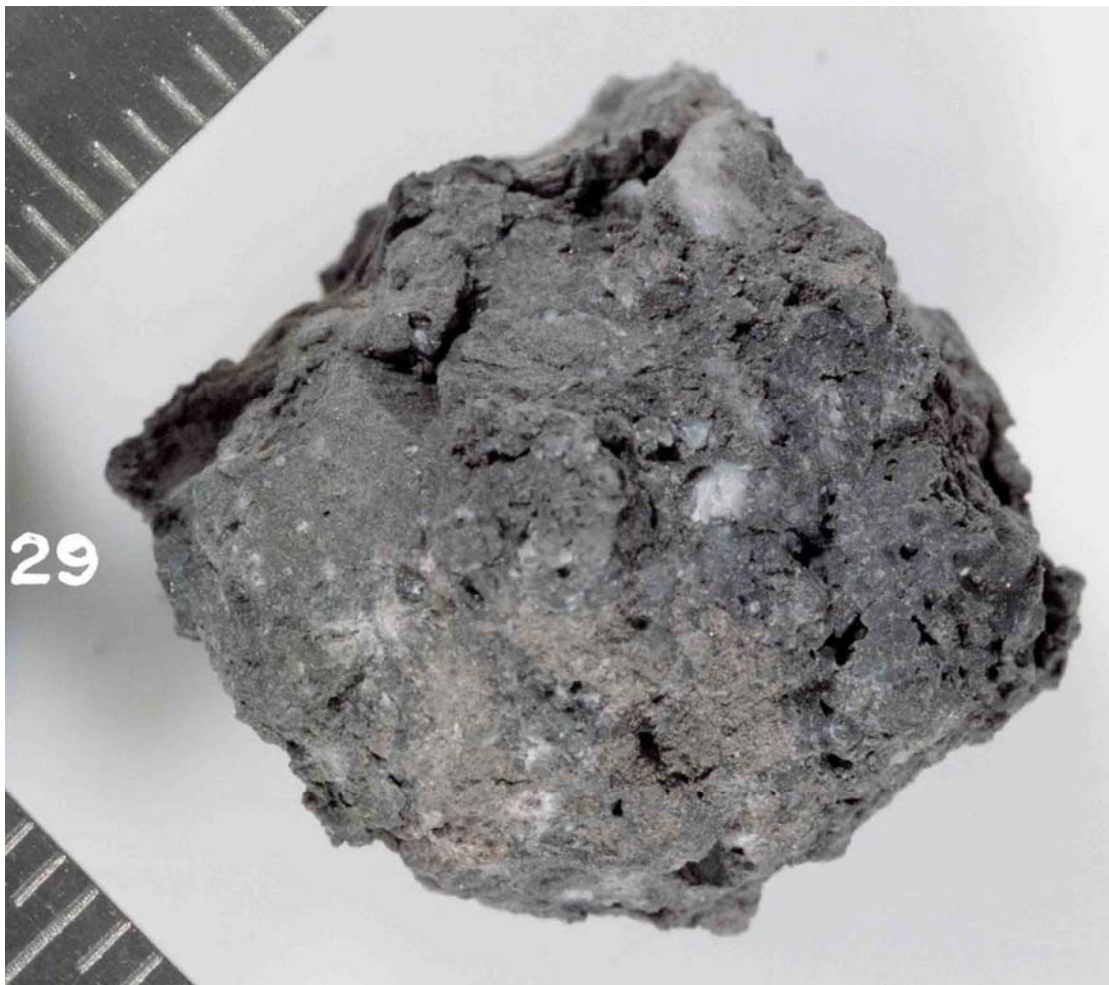


FIGURE 1. Smallest scale division in mm. S-72-51049.

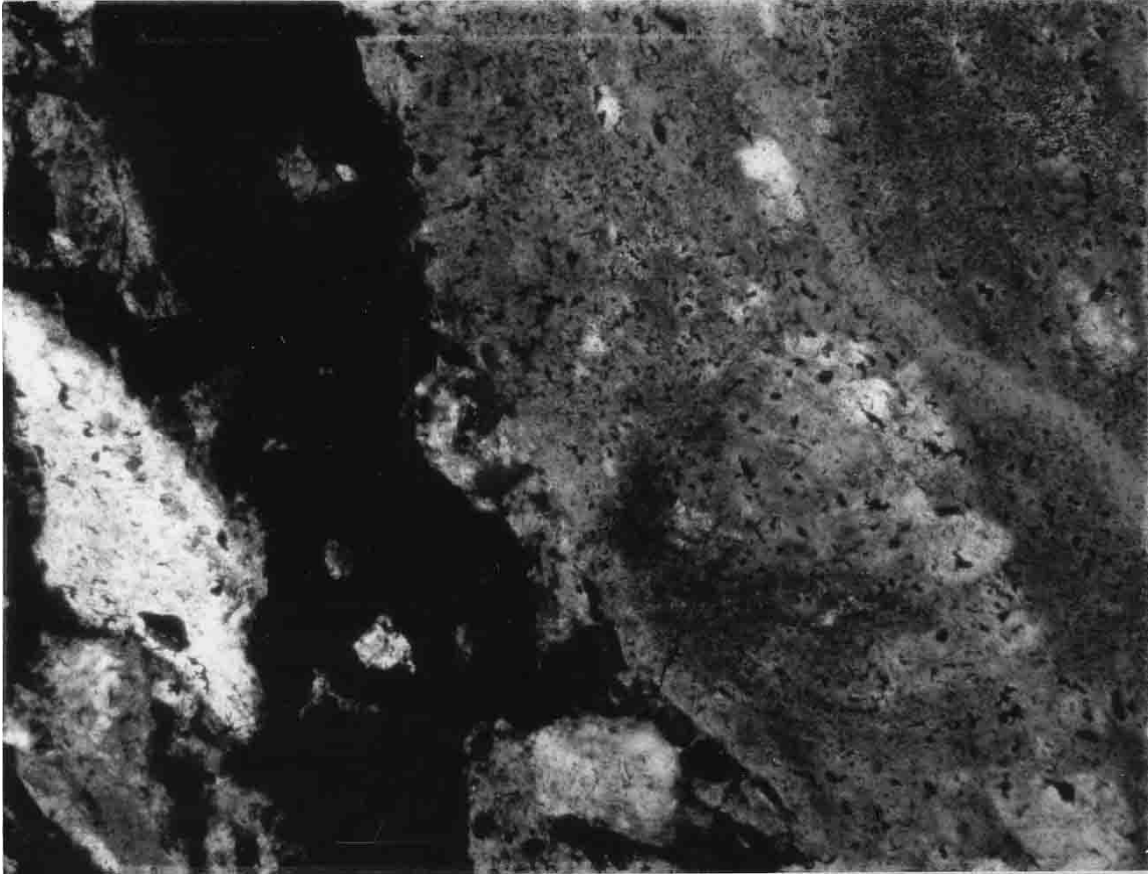


FIGURE 2. 68529,1. Glass (left) and shocked plagioclase (right), partly xpl. Width 3 mm.