

INTRODUCTION: 68847 is coherent, medium dark gray, and contains small white clasts (Fig. 1). The presence of vesicles suggests that it is an impact melt, and it is either fine-grained or glassy. It was taken from a regolith sample collected a few meters north of a small boulder (from which 68815 was taken) and about 40 m east of the two small craters at the station. Zap pits are present on some surfaces.

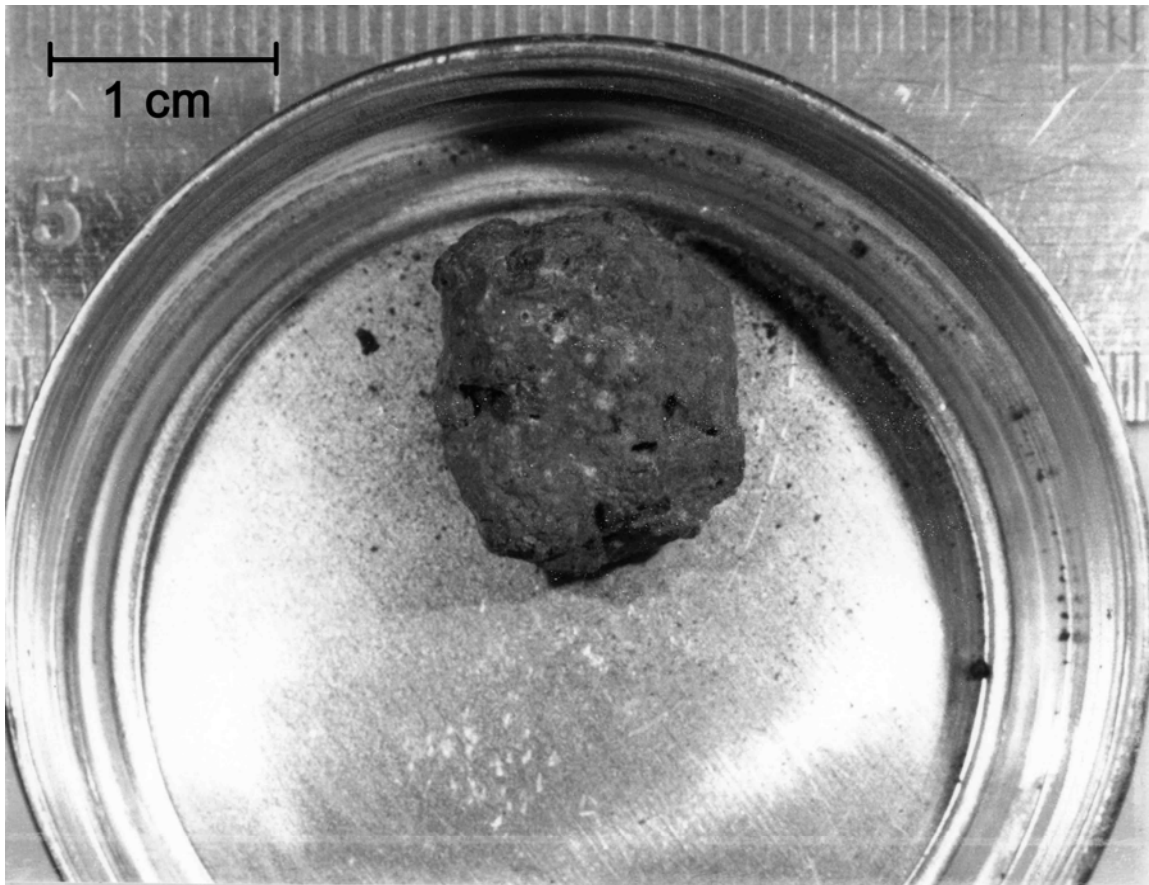


FIGURE 1.