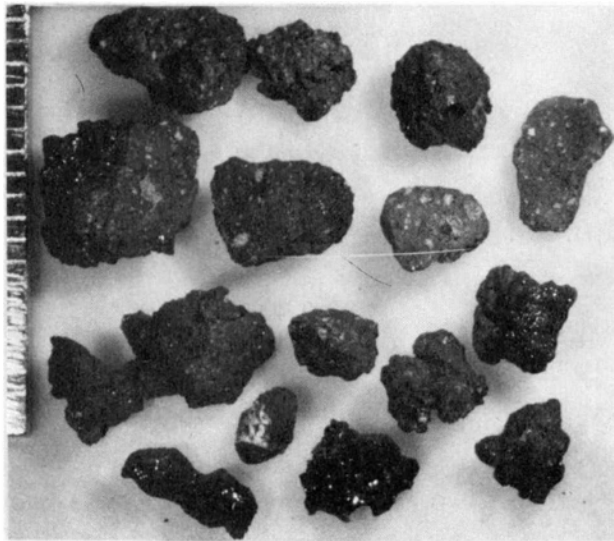


12070,135 4-10mm
2 Subsamples (,788 ,789)

12070,788

Soil breccias and vesicular glasses
16 particles; 1.220 grams

Coherence: Moderately coherent to tough; brittle
Shape: Subrounded to angular; irregular
Surface: Smooth to rough and grainy; patches of vesicular glass; sparse zap pits
Character: Mare regolith products; medium to dark gray polymict breccias and conchoidal fragments of brown, vesicular glass.



12070,789

Vitrophyre
1 particle; 0.320 grams

Coherence: Tough
Shape: Angular, blocky
Surface: Relatively smooth; texture very fine-grained to aphanitic
Color: Dark brown
Character: Vitrophyric basalt with crystals of olivine or pyroxene in a cryptocrystalline or glassy groundmass.



ACKNOWLEDGEMENTS

Many thanks are owed to Andrea Mosie of Northrup Services, Inc., who processed and photographed all of the soil samples, and to Melanie Phipps, Linda Prestera, and Karen Motylewski of the Center for Astrophysics, who helped with the typing and editing of the Catalogue.

This project was supported by NASA Contract NGL 09-015-150.

Inventory

<u>Sample</u>	<u>Parent</u>	Size Range	Grams	Page
12001,523	101	4-10mm	0.380	8
,524			0.190	9
,525			0.080	10
12001,528	100	2-4mm	0.230	11
,529			0.700	11
,530			0.720	12
,531			0.450	12
,532			0.810	13
12001,535	119	4-10mm	0.780	14
,536			0.360	14
,537			1.280	15
12001,538	119	2-4mm	0.610	15
,539			0.560	16
,540			0.790	16
,541			0.750	17
,542			0.390	18
,543			0.010	18
12001,544	119	1-2mm	5.090	19
12001,549	4	4-10mm	1.840	20
,550			2.370	21
,551			0.980	22
,552			2.510	22
,553			0.250	23
,554			0.590	23
,555			0.710	24
12001,556	4	2-4mm	7.180	25
,557			0.700	26
,558			2.270	27
,559			1.070	28
,560			0.930	29
12001,561	4	1-2mm	19.260	30
,562			1.390	31
,563			0.290	32
,564			6.330	32

<u>Sample</u>	Parent	Size Range	Grams	<u>Page</u>
12003,174	28	4-10mm	4.190	33
,175			1.150	34
,176			0.790	35
,177			0.450	35
,178			0.490	36
,179			0.100	37
12003,182	27	2-4mm	1.710	38
,183			1.950	39
,184			1.390	40
,185			4.490	41
,186			1.290	42

12023,78	0	4-10mm	0.360	43
12023,79	0	2-4mm	0.470	44
,80			0.100	45
,81			0.260	45
12023,82	0	1-2mm	1.400	46
12023,84	0	2-4mm	0.450	47
,85			0.330	48
,86			0.270	48
,87			0.390	49
12023,88	0	1-2mm	2.370	50

12024,15	0	>1cm	14.100	51,52
,16			8.310	53

12030,103	33	>1cm	15.560	54
12030,104	33	4-10mm	11.940	55
,105			0.190	56
12030,111	106	2-4mm	0.570	57
,112			1.030	58
,113			0.290	59
12030,115	3	2-4mm	1.130	60
,116			2.770	61
,117			0.340	62
,118			0.380	62

Sample	Parent	Size <u>Range</u>	Grams	<u>Page</u>
12032,272	200	>1cm	12.020	63
,273			3.690	64
12032,274	200	4-10mm	5.940	65
,275			2.110	66
,276			0.360	67
,277			0.200	67
12032,279	200	1-2mm	0.120	68
12032,282	278	2-4 mm	0.320	68
,283			0.290	69
,284			0.030	69

12033,103	1	>1cm	3.740	70
,104			17.290	71
12033,125	1	4-10mm	7.540	72
,126	11		1.990	73
12033,418	307	4-10mm	3.880	74
,419			2.370	75
,420			1.150	76
,421			1.070	76
12033,425	124	4-10mm	0.130	77
,426			0.790	78
,427			0.570	78
,428			0.900	79

12037,156	1	4-10mm	3.400	80
,157			1.550	81
,158			0.230	81
12037,161	2	2-4mm	0.370	82
,162			0.520	82
,163			2.430	83
,164			1.480	84
,165			0.300	85
,166			0.200	85

Sample	Parent	Size Range	Grams	Page
12041,4	0	4-10mm	0.230	86
12041,73	3	2-4mm	0.160	86
,74			0.250	87
,75			0.010	87

12042,242	182	4-10mm	0.190	88
,243			0.260	88
,244			0.090	88
12042,245	2	2-4mm	0.340	89
,246			0.650	90
,247			0.290	90

12044,39	22	4-10mm	0.050	91
12044,111	24	4-10mm	0.290	92
,112			0.950	92
12044,115	23	2-4mm	0.220	93
,116			0.290	93
,117			0.480	94
,118			0.050	94

12070,788	135	4-10mm	1.220	95
,789			0.320	95

