

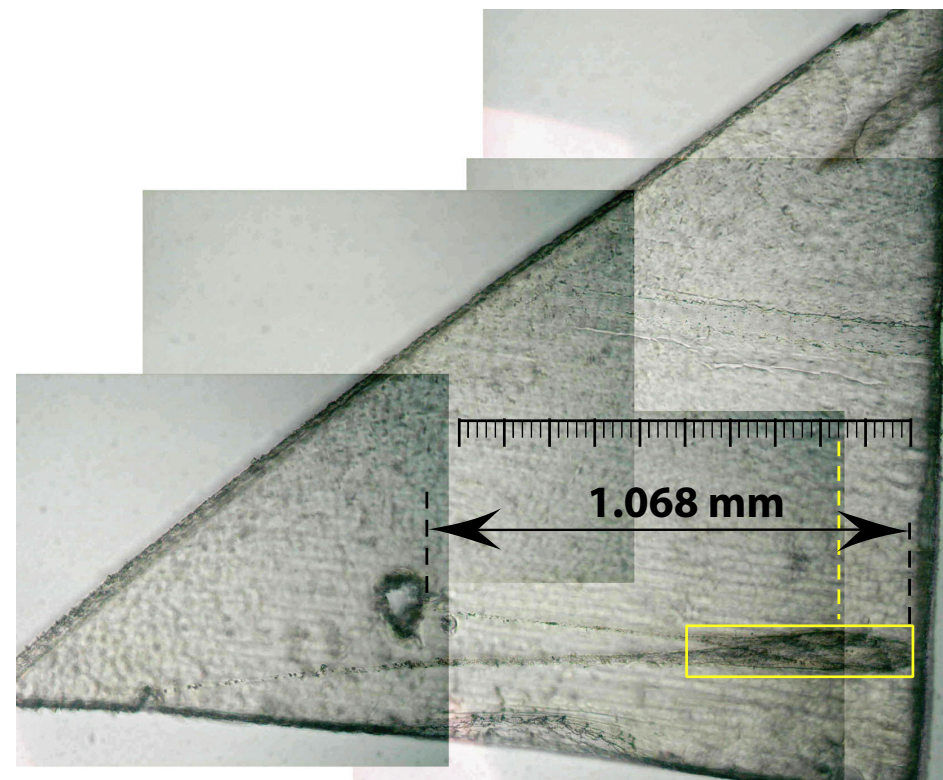
**STARDUST Sample# C1026,2,68,0 keystone
extracted 4/13/2006.**

**Terminal particle analysis T. Nakamura.
after terminal particle extraction.**

scale est'd. from 2.0 zoom x 25xEyepiece.

Target stereo: top 500 x 110 micron

Target map: two styli



microns (est.) 400 300 200 100 0

