

Table 1. Wild 2 samples studied and size of major aggregates on TEM grids.

| Sample No. | Aggregate size (μm) |
|------------------------------|----------------------------------|
| Silicate-rich samples | |
| FC13-0-17-1-3 | 11.3 \times 7.5 |
| | 8.2 \times 4.3 |
| | 5.3 \times 3.7 |
| C2115-24-22-1-8 | 20.0 \times 2.9 |
| | 7.5 \times 2.3 |
| | 2.6 \times 0.9 |
| | 2.1 \times 0.9 |
| | 1.6 \times 1.6 |
| C2027-2-69-1-4 | 14.4 \times 8.1 |
| | 13.1 \times 8.8 |
| Si-O glass-rich samples | |
| C2054-0-35-16-6 [*] | 12.5 \times 7.2 |
| | 4.9 \times 0.7 |
| | 4.0 \times 2.7 |
| | 1.1 \times 0.2 |
| C2054-0-35-44-3 [*] | 14.5 \times 8.0 |
| | 12.5 \times 8.5 |
| C2054-0-35-53-3 [*] | 9.2 \times 3.8 |
| | 8.9 \times 4.2 |
| | 1.5 \times 0.9 |
| C2004-1-44-4-4 | 23.0 \times 11.0 |
| | 18.5 \times 4.8 |
| Nondefinable samples | |
| FC4-0-3-1-1 | 4.3 \times 3.8 |
| | 3.8 \times 3.4 |
| | 3.1 \times 2.5 |
| | 3.3 \times 2.3 |
| | 2.8 \times 2.3 |
| | 2.6 \times 1.5 |
| FC12-0-16-1-6 | 3.8 \times 1.3 |

The three silicate-rich samples are from track termini. The remainder is from track walls. * From the same track, track 35.

Table 2. Silicates and sulfide/metal in the silicate-rich samples.

| Sample | Olivine | Low-Ca pyroxene | High-Ca pyroxene | Sulfide/metal |
|-----------------|---------------------|---|---|----------------|
| FC13-0-17-1-3 | Fa ₃₀₋₅₀ | Fs ₃₋₁₃ Wo ₁₋₅ (Oen) | Fs ₁₅₋₁₉ Wo ₃₄₋₃₈ (Aug) | Fe(Ni)S |
| C2115-24-22-1-8 | Fa ₉₋₃₆ | - | Fs ₉₋₁₂ Wo ₄₆₋₅₁ (Di) | - |
| C2027-2-69-1-4 | Fa ₁₉₋₂₄ | Fs ₂₀₋₃₂ Wo ₃₋₉ (Cen-Pig) | - | Fe(Ni)S-Fe(Ni) |

Fa=Fayalite, Fs=Ferrosilite, Wo=Wollastonite, Oen=Orthoenstatite, Cen=Clinoenstatite, Pig=Pigeonite, Aug=Augite, Di=Diopside.

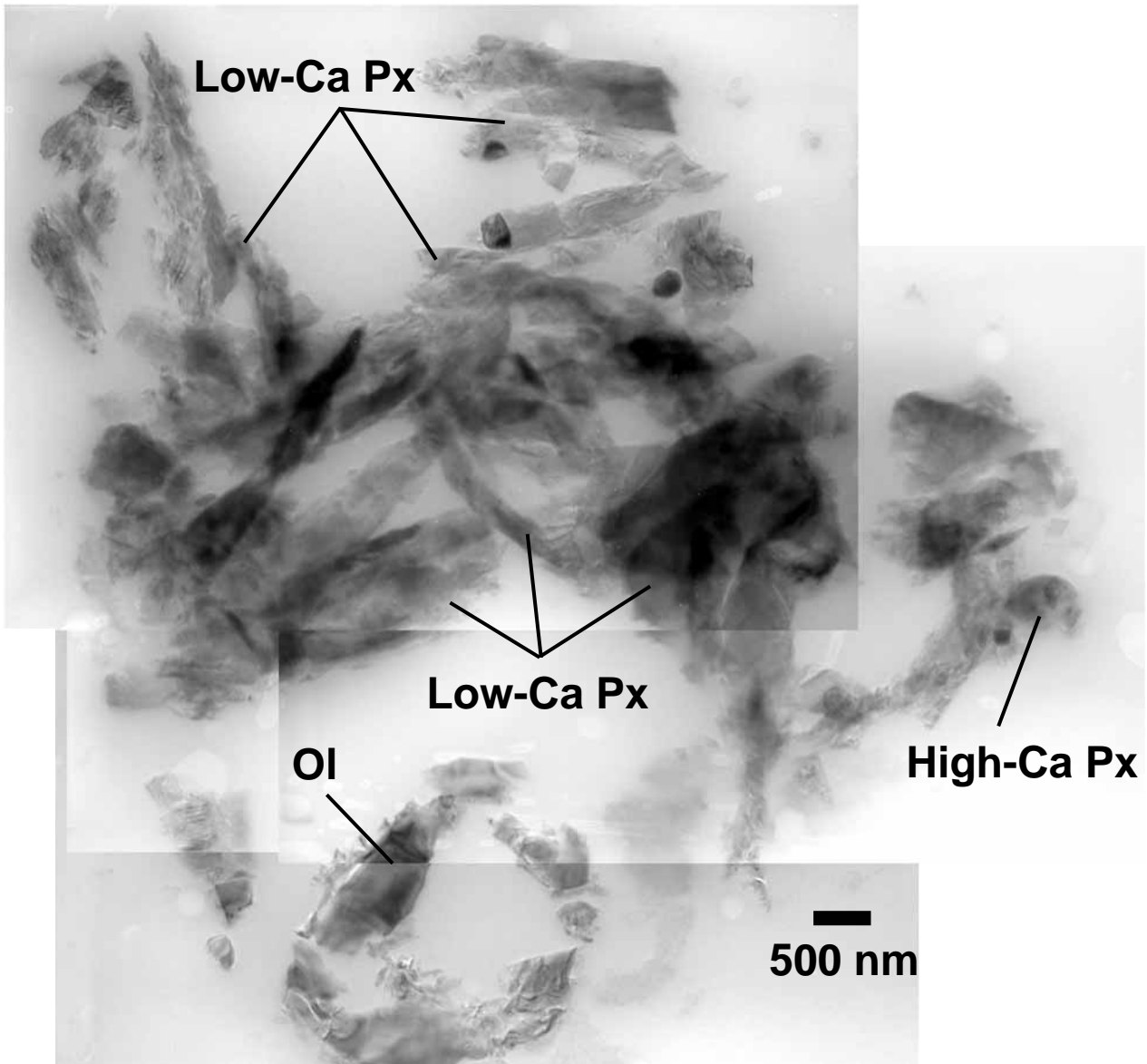


Fig. 1

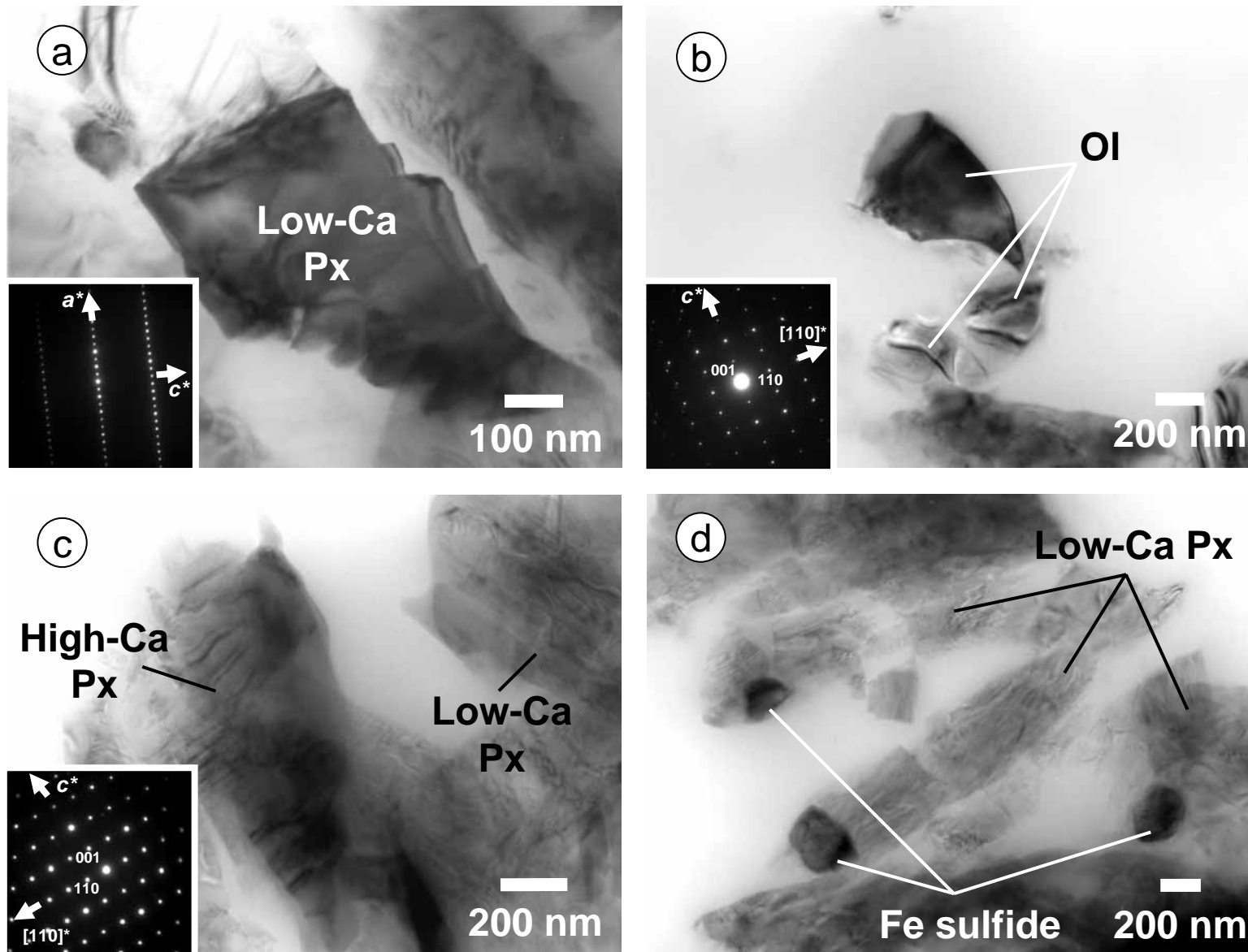


Fig. 2

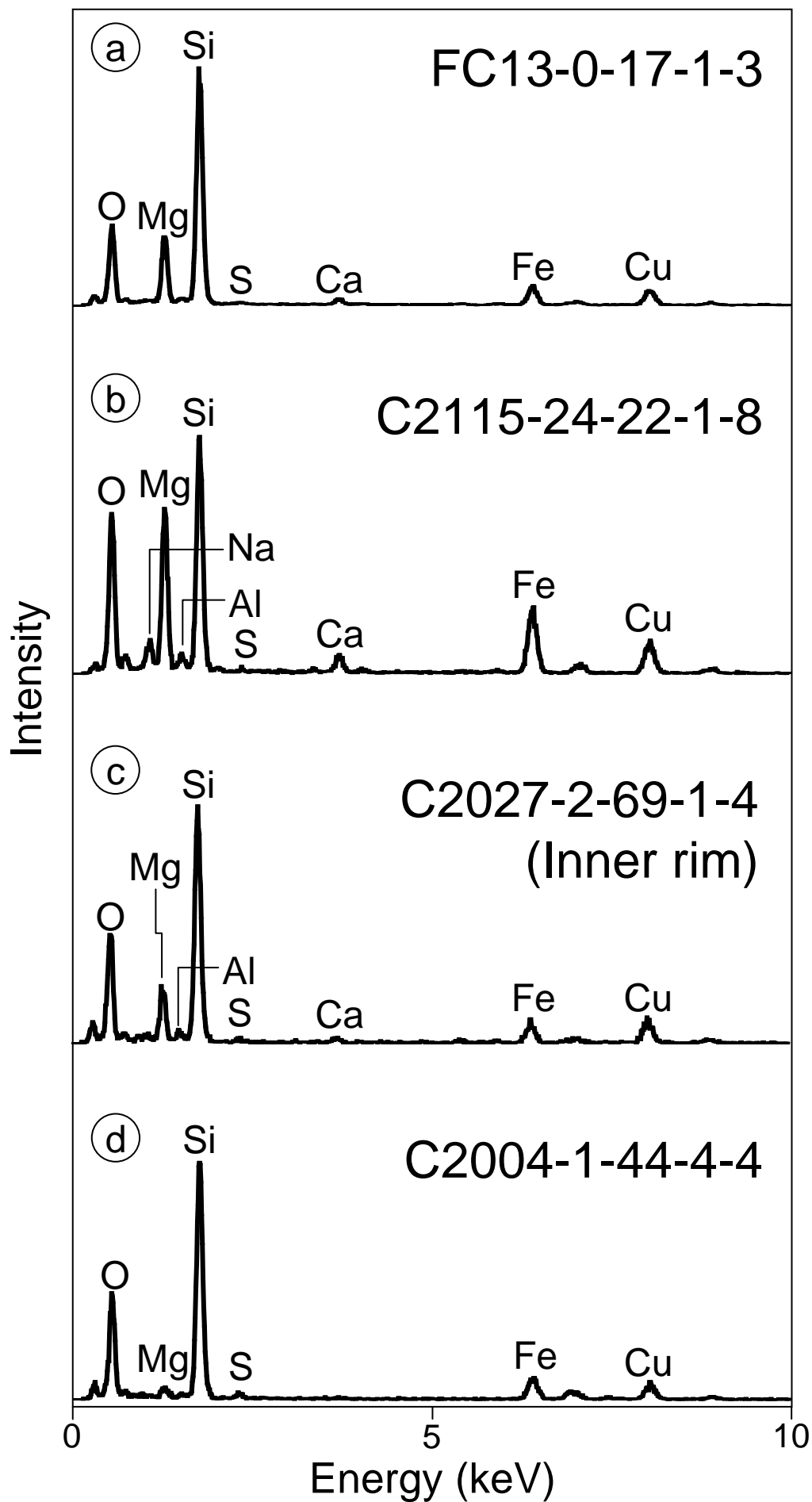


Fig. 3

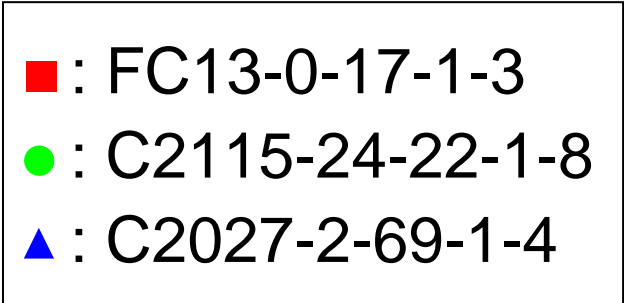
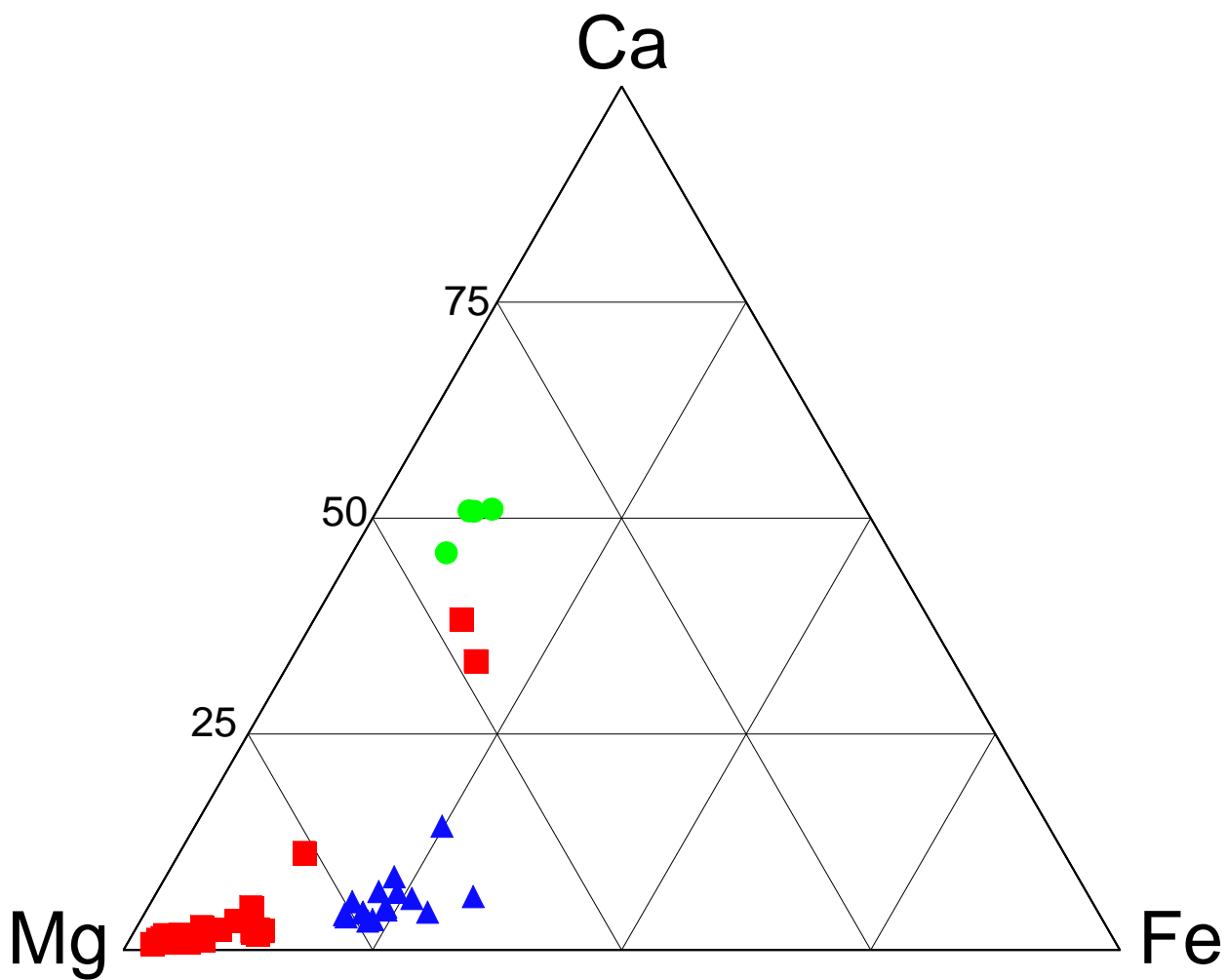


Fig. 4

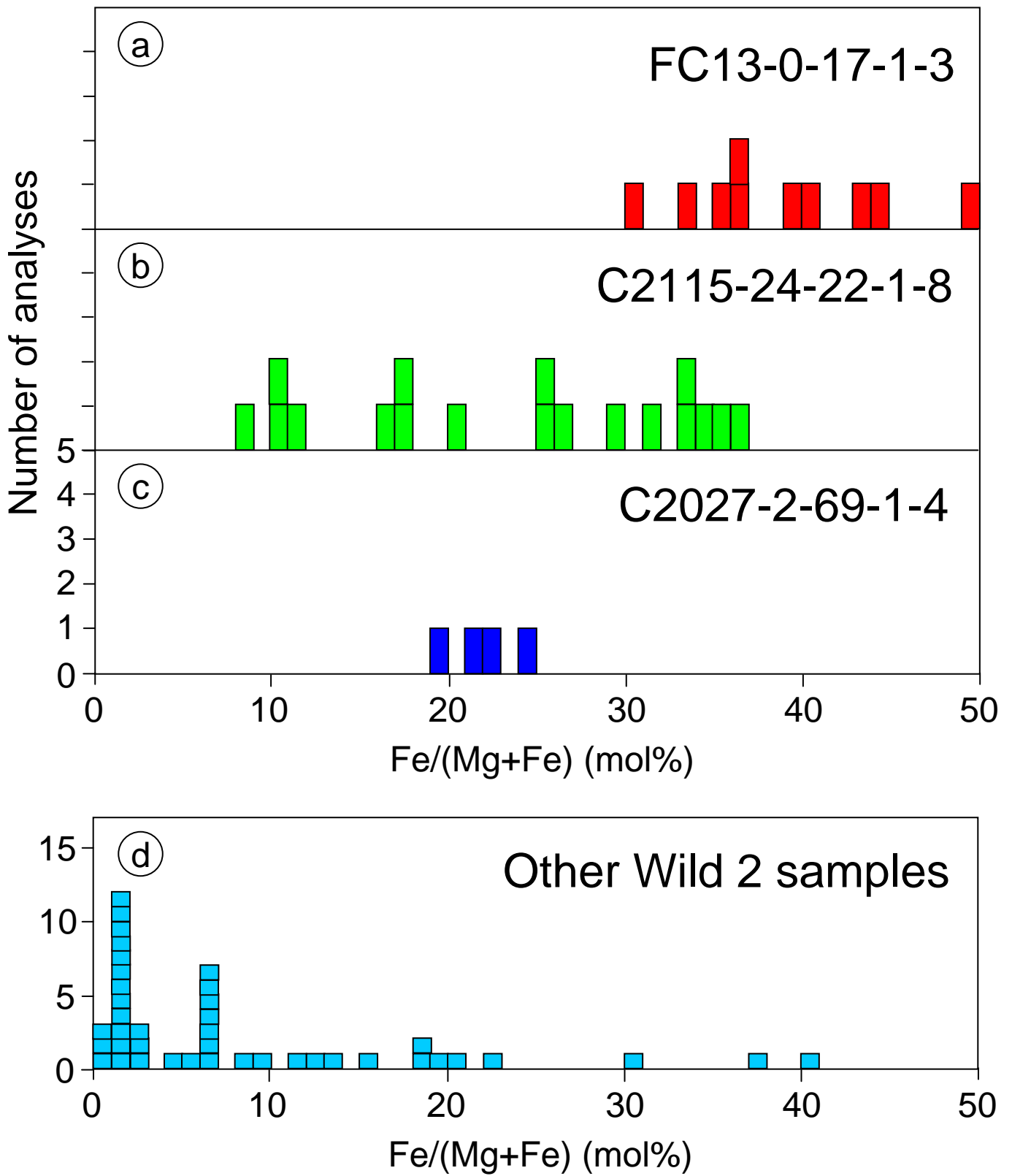


Fig. 5

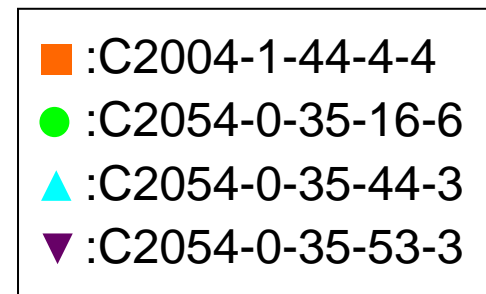
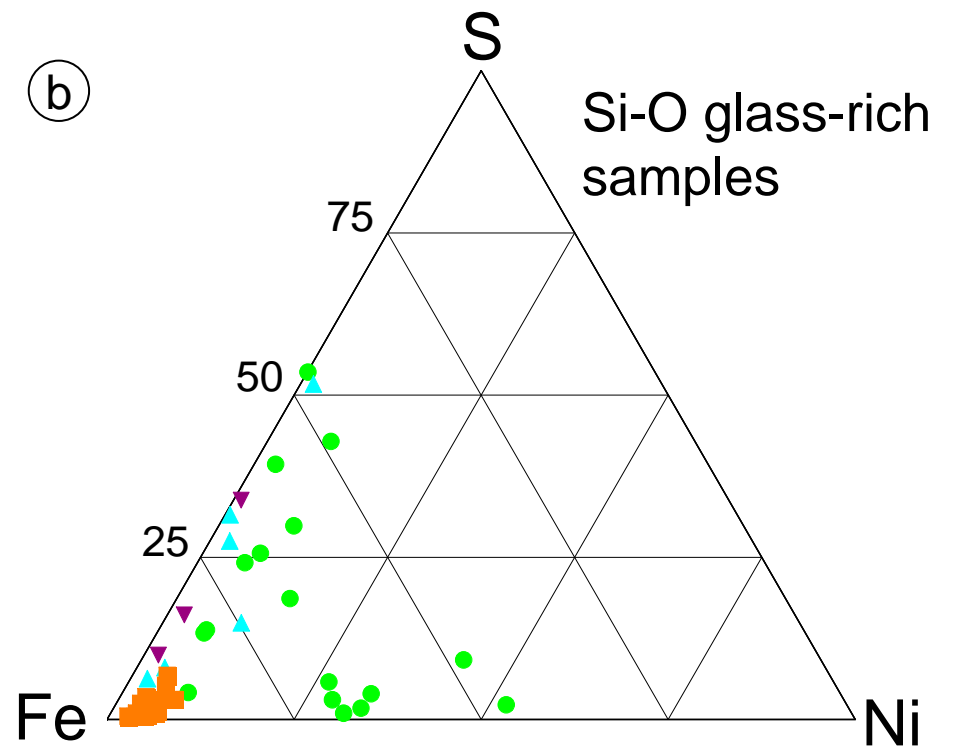
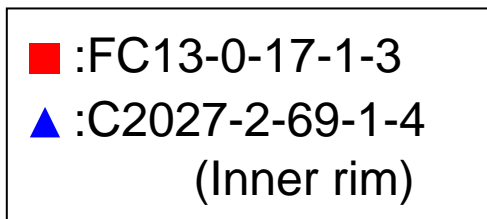
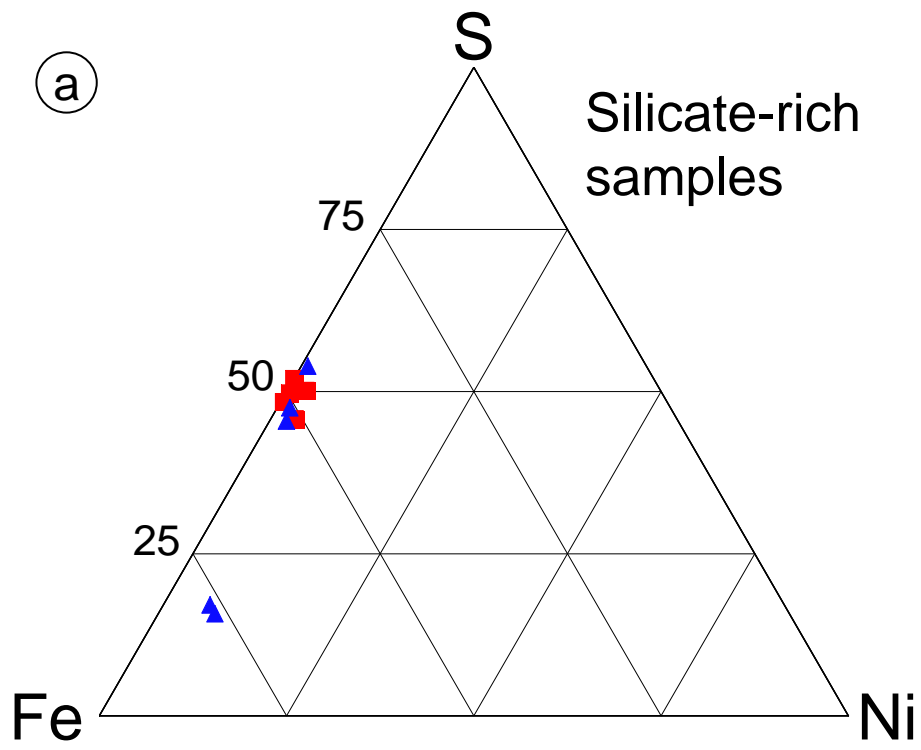


Fig. 6

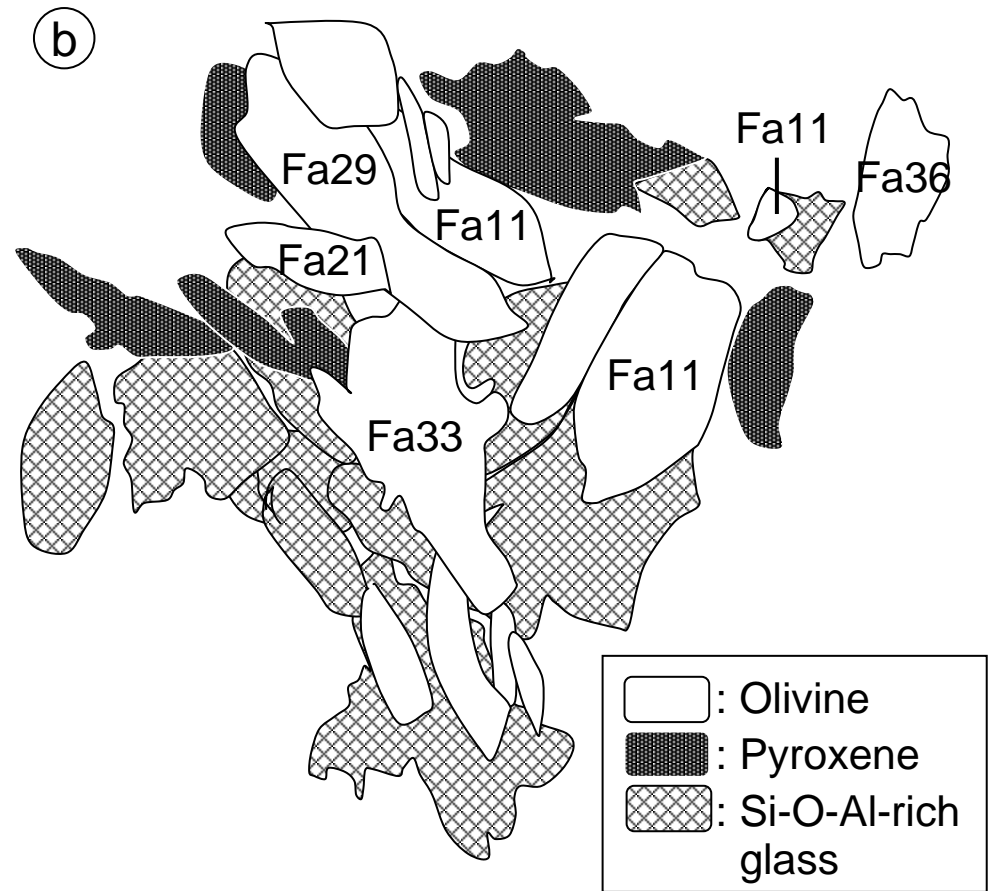
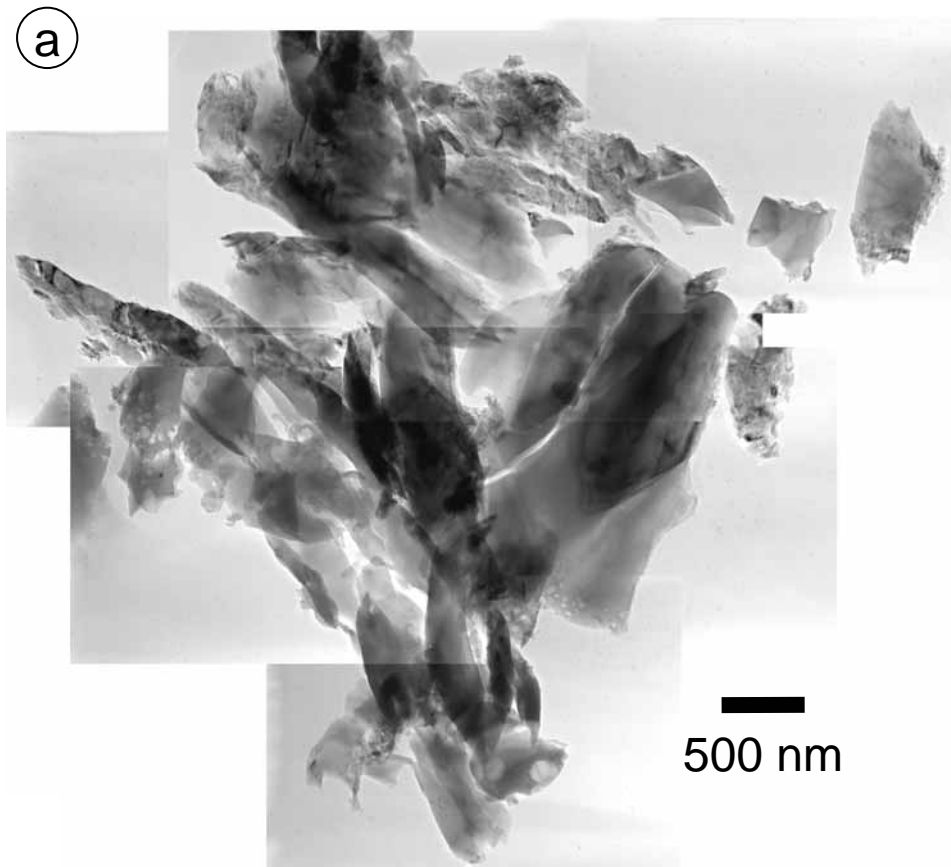


Fig. 7

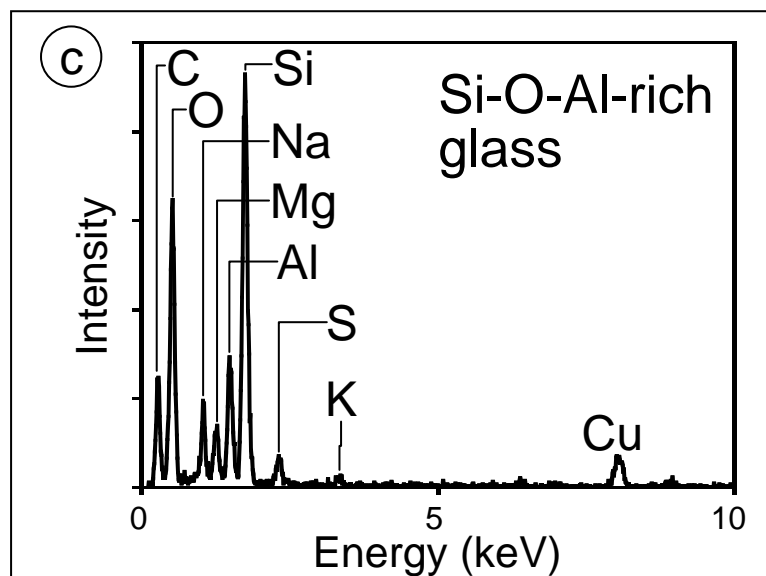
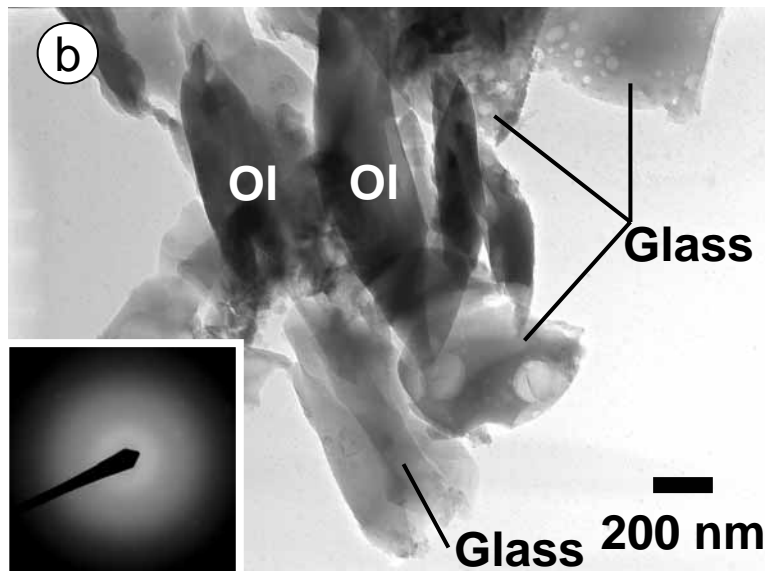
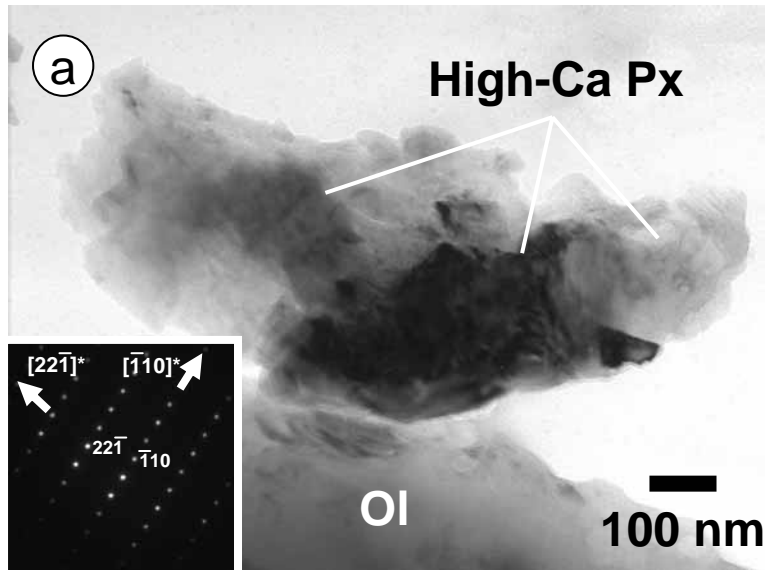


Fig. 8

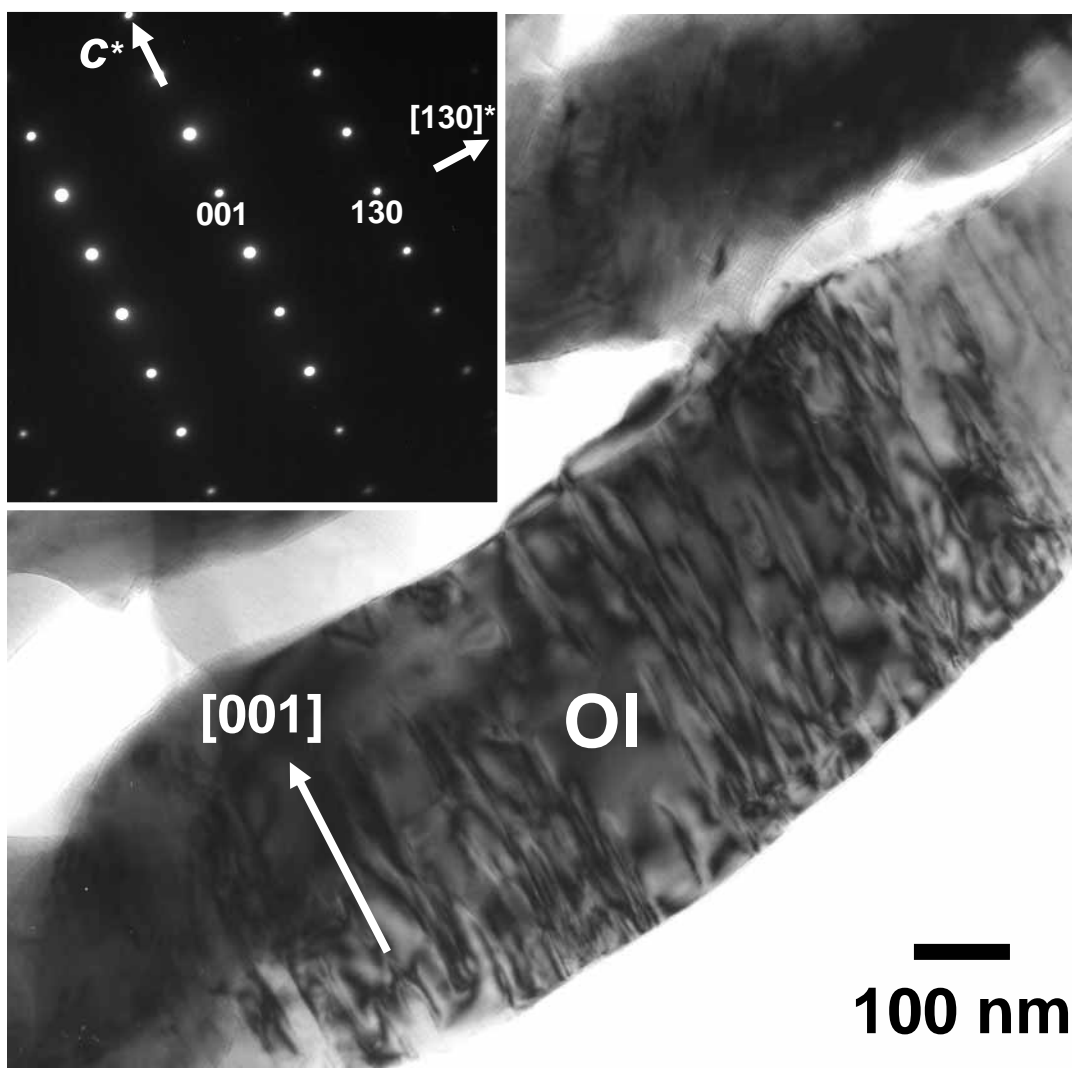


Fig. 9

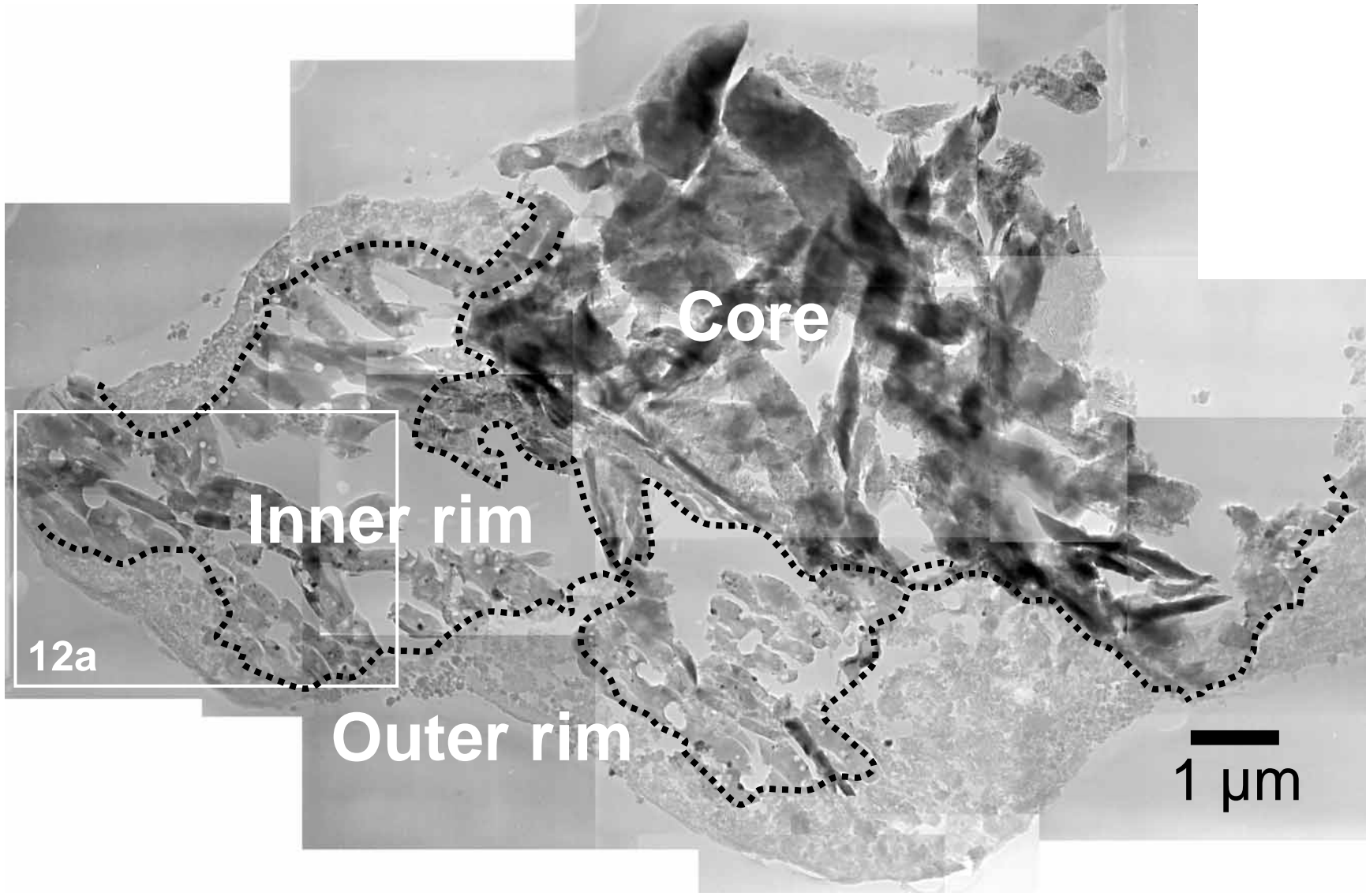


Fig. 10

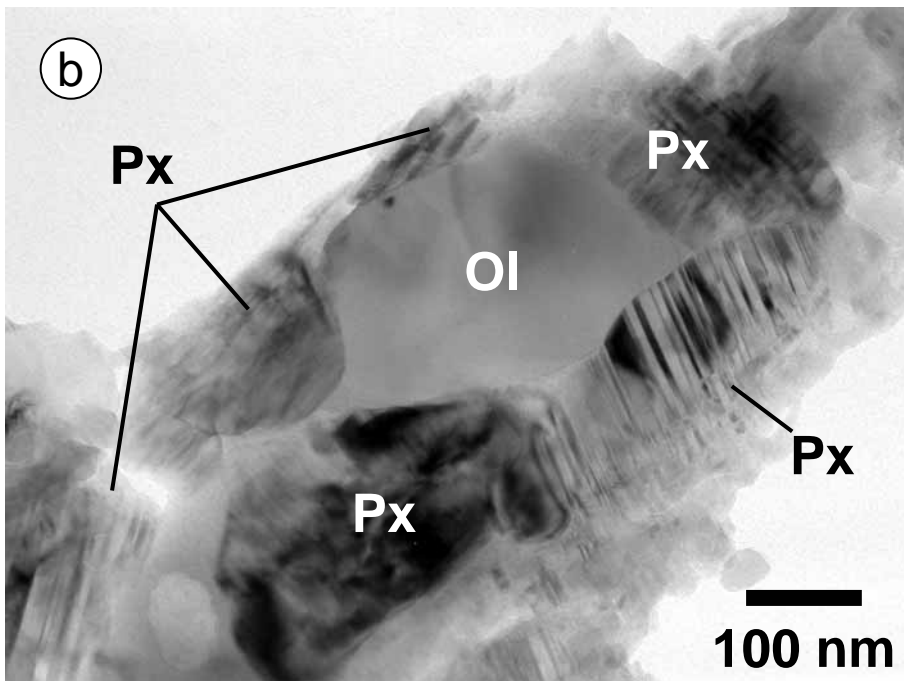
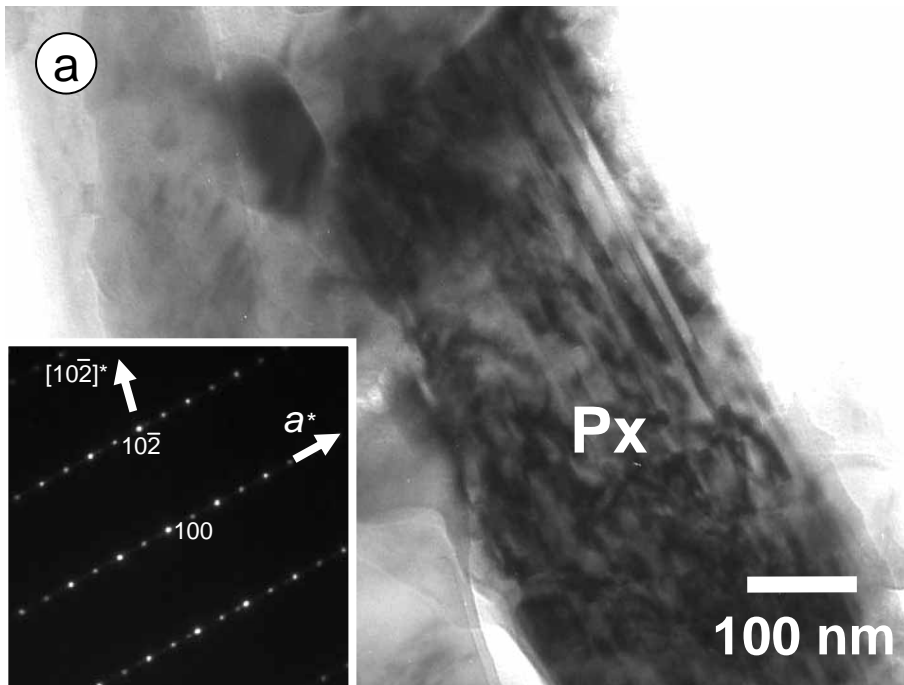


Fig. 11

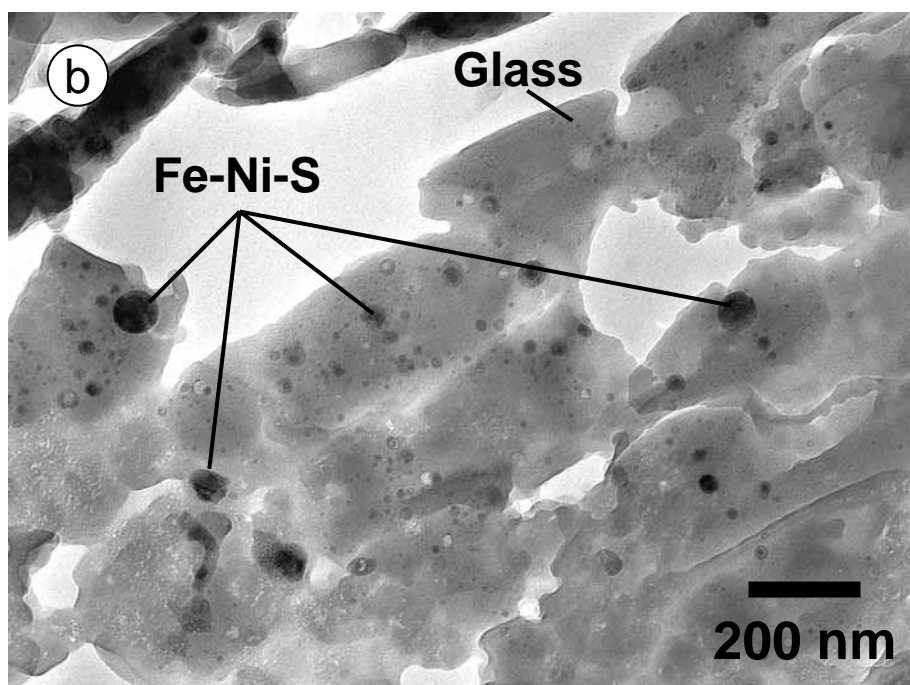
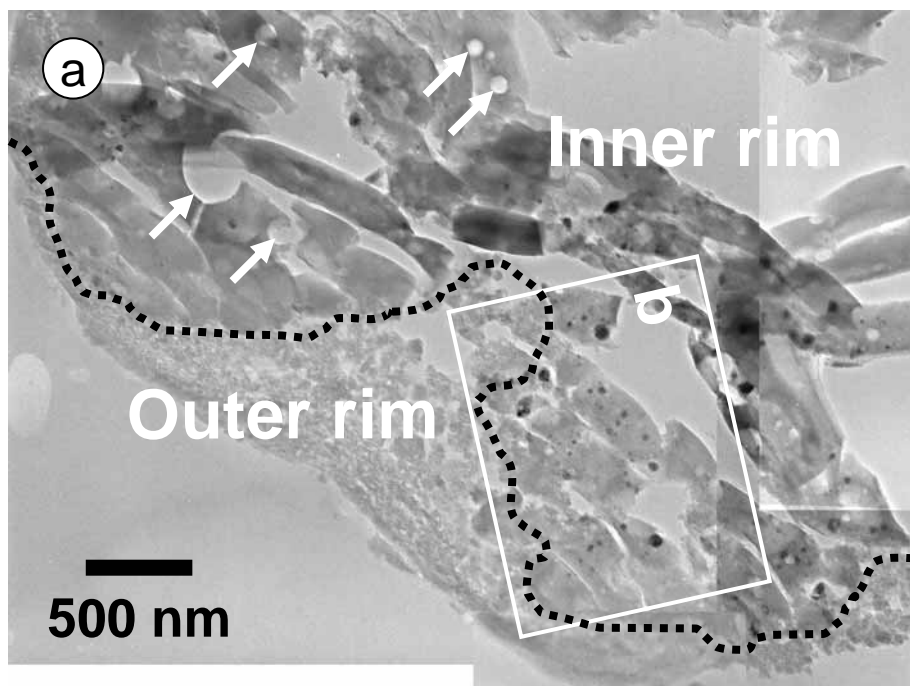


Fig. 12

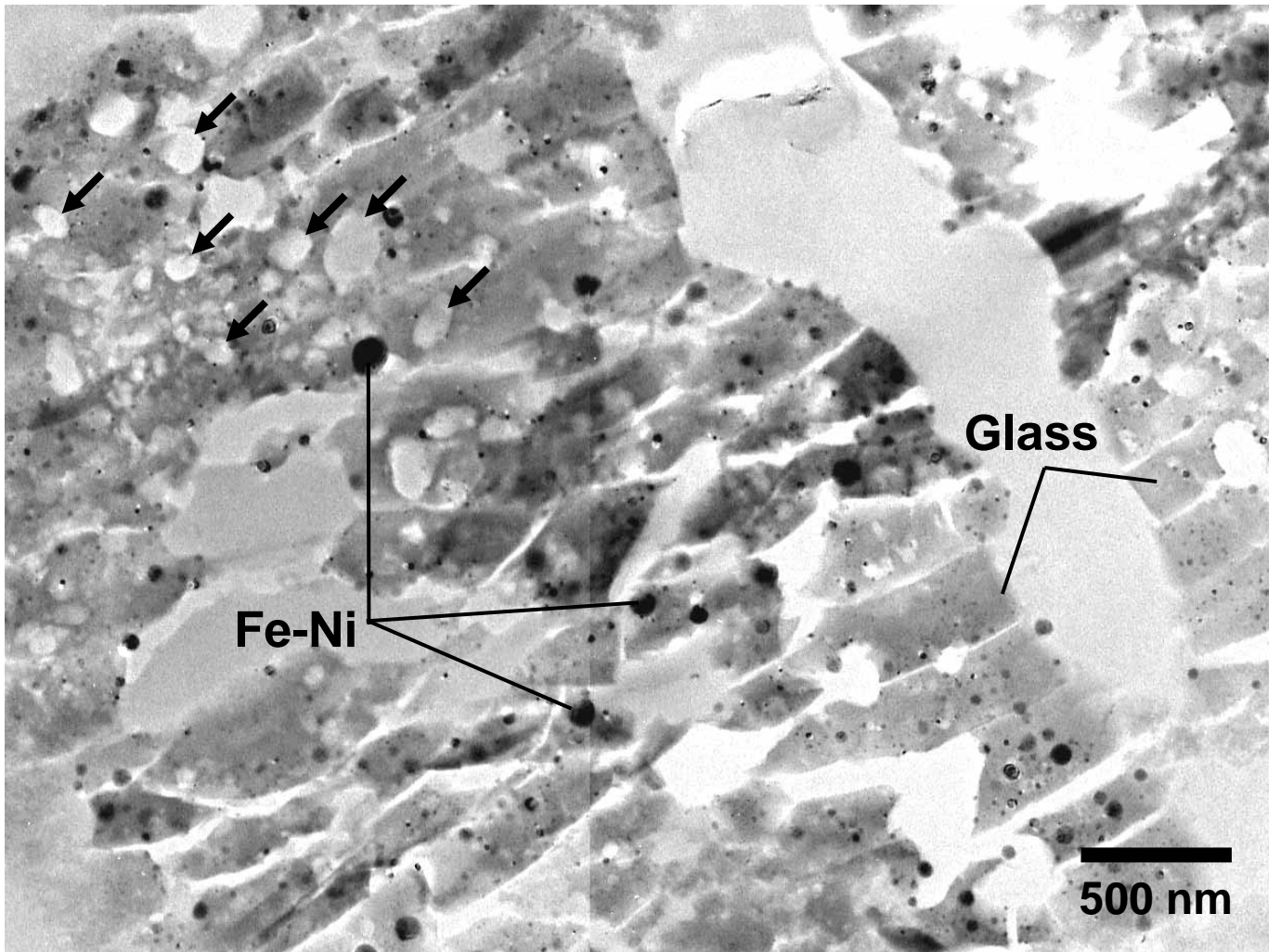


Fig. 13

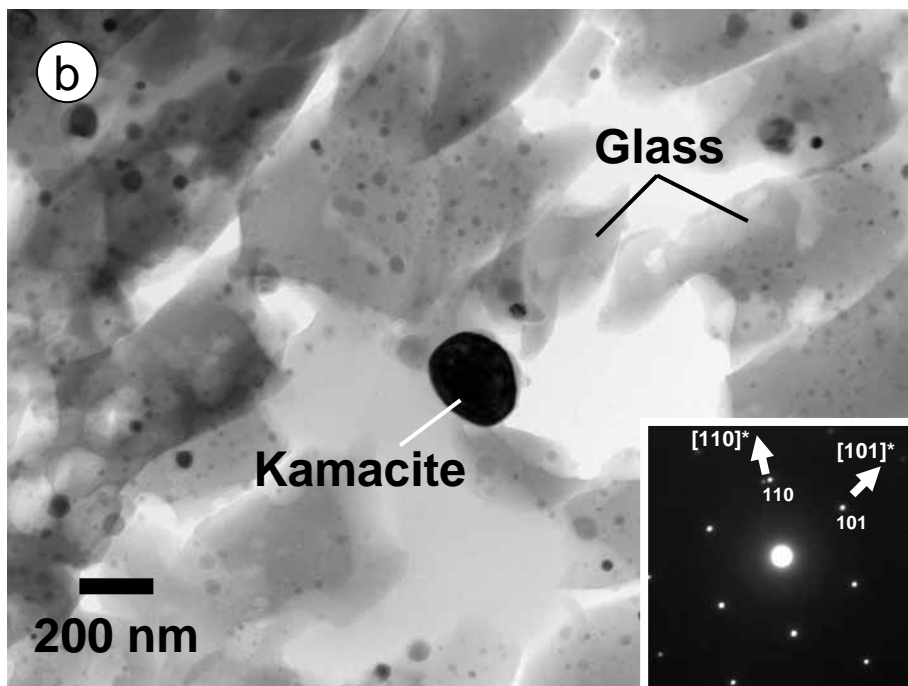
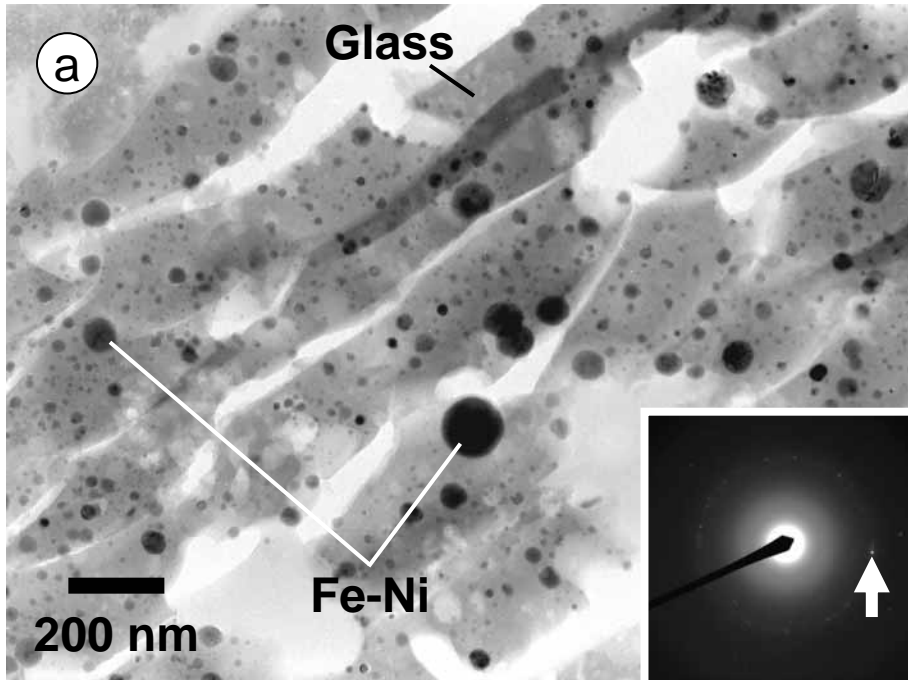


Fig. 14

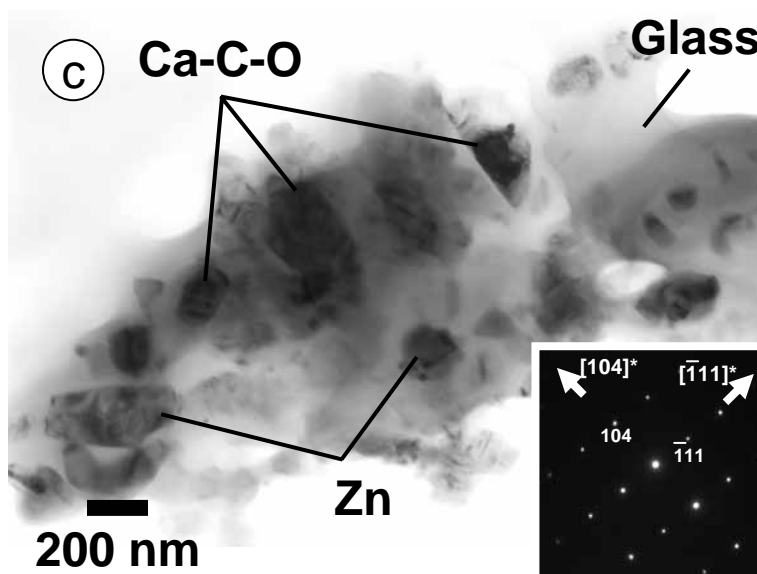
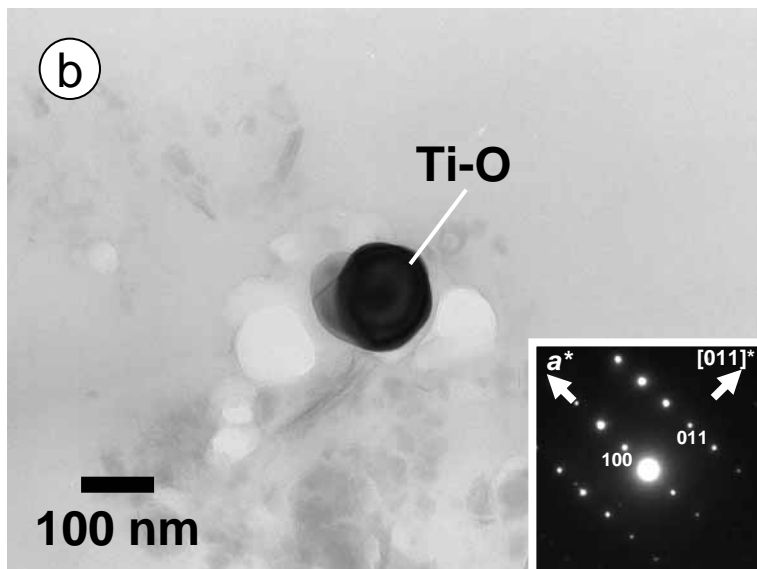
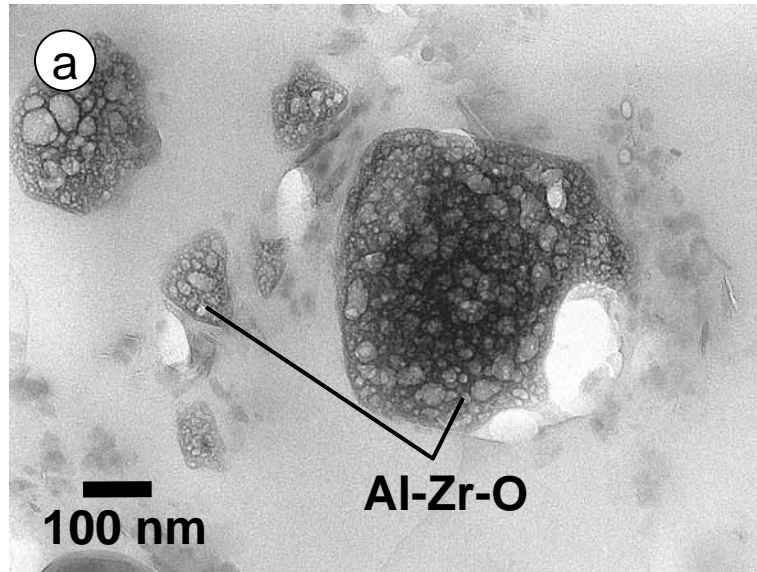


Fig. 15