

Cell C2038

Track 105

Images

Aerogel Cell:

Level 2 - [C2038-01.jpg](#)

Level 3 – [C2038_t1_20x.jpg](#)

Track and Grains:

Microtomed samples:

Track History: Cell C2038 was removed from the cometary grid in May of 2006 and sent to the University of California at Berkeley for further processing. Track 105 was contained in Split 5 of tile C2038 and was generated by Westphal / Snead on January 26, 2007. Fragment 5 was later split in to two pieces with Fragment 6 containing the terminal particle end of the track.

Track Characteristics:

Type: Type B Carrot

Length / Depth: N/A

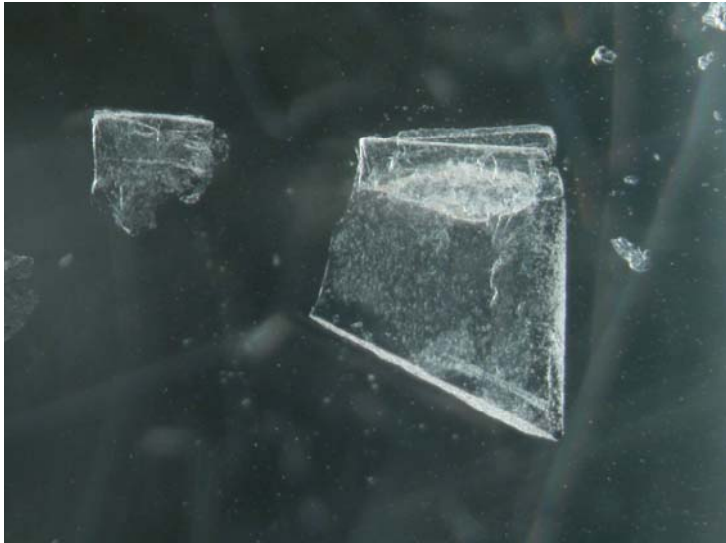
Grain diameters: N/A

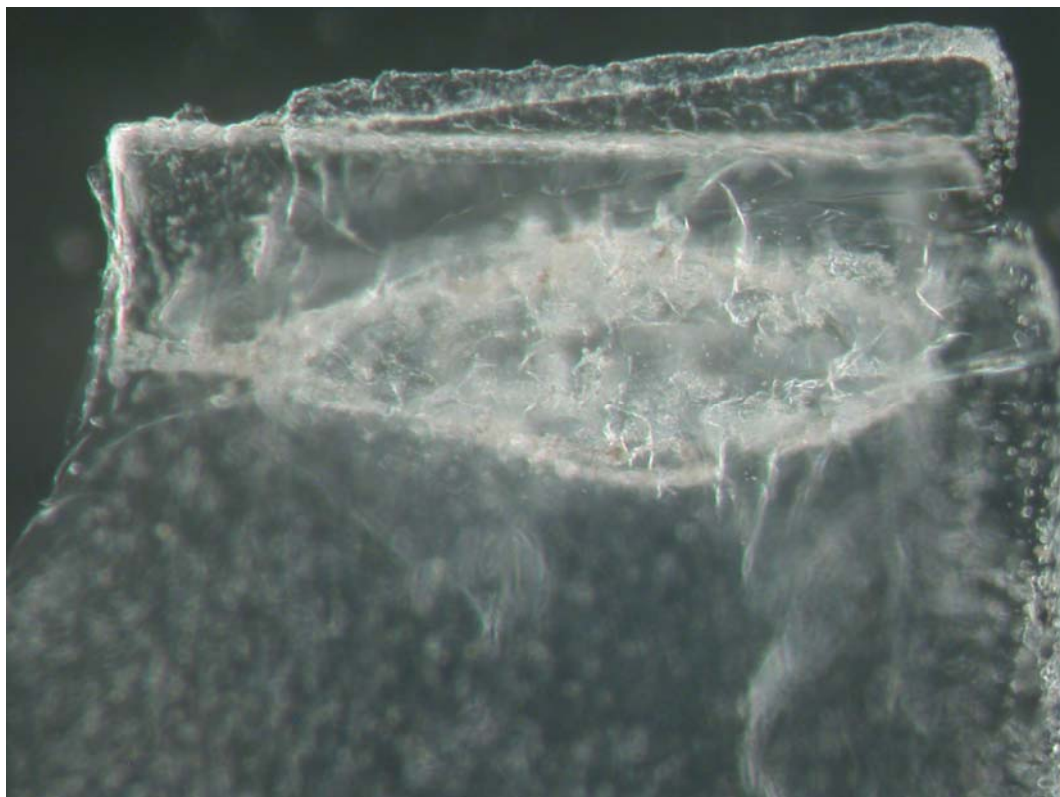
[Allocation History](#)

Results

Track: Allocated to Westphal in February 2007..

Data Files: No Data





Split 5, above with Split 6 below.

