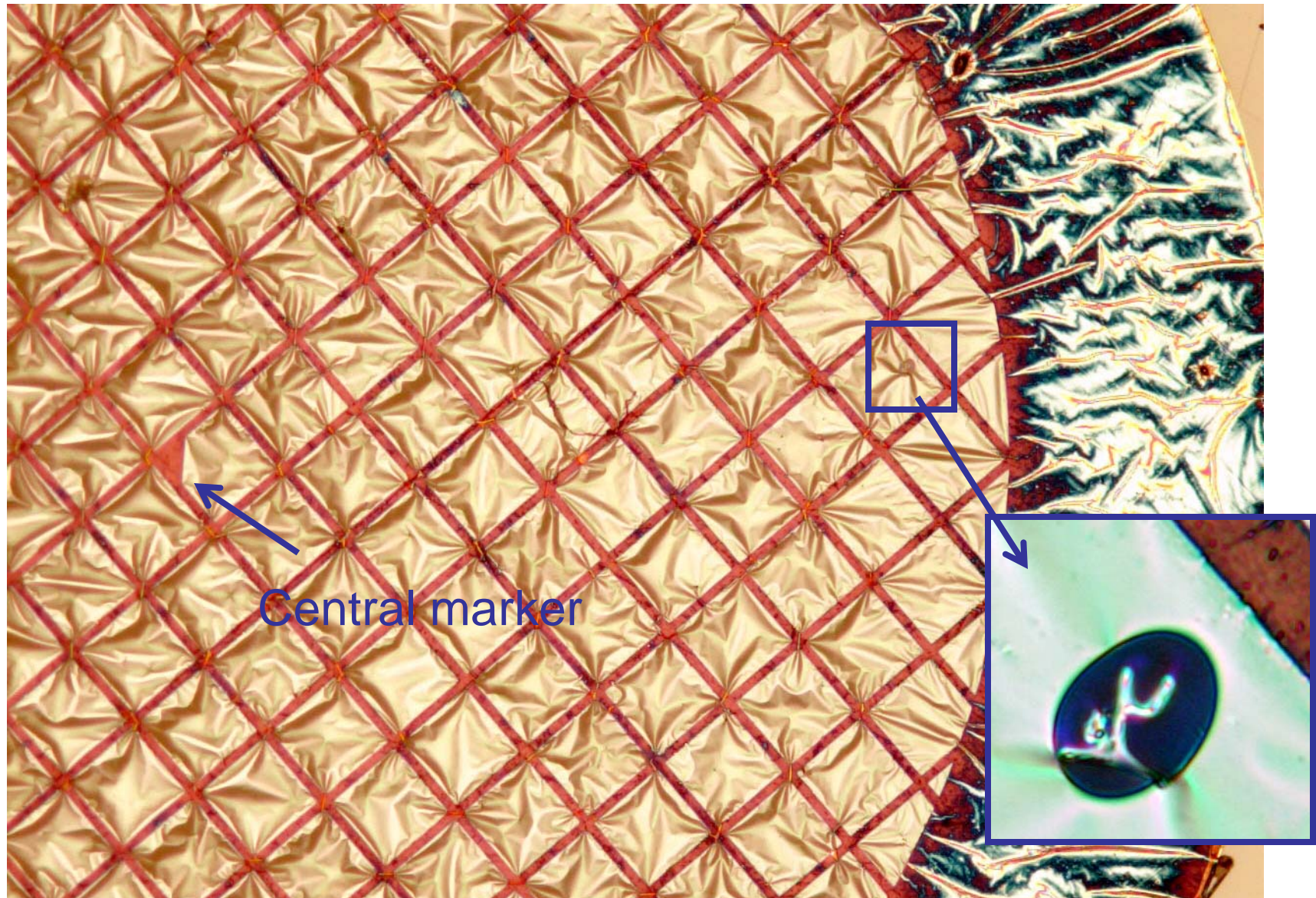


Sample# 2, 1, 2

Fragment container#12, particle#2, Grid#1, microtome slice #1-7 (100 nm x7)



Sample# 2, 1, 3

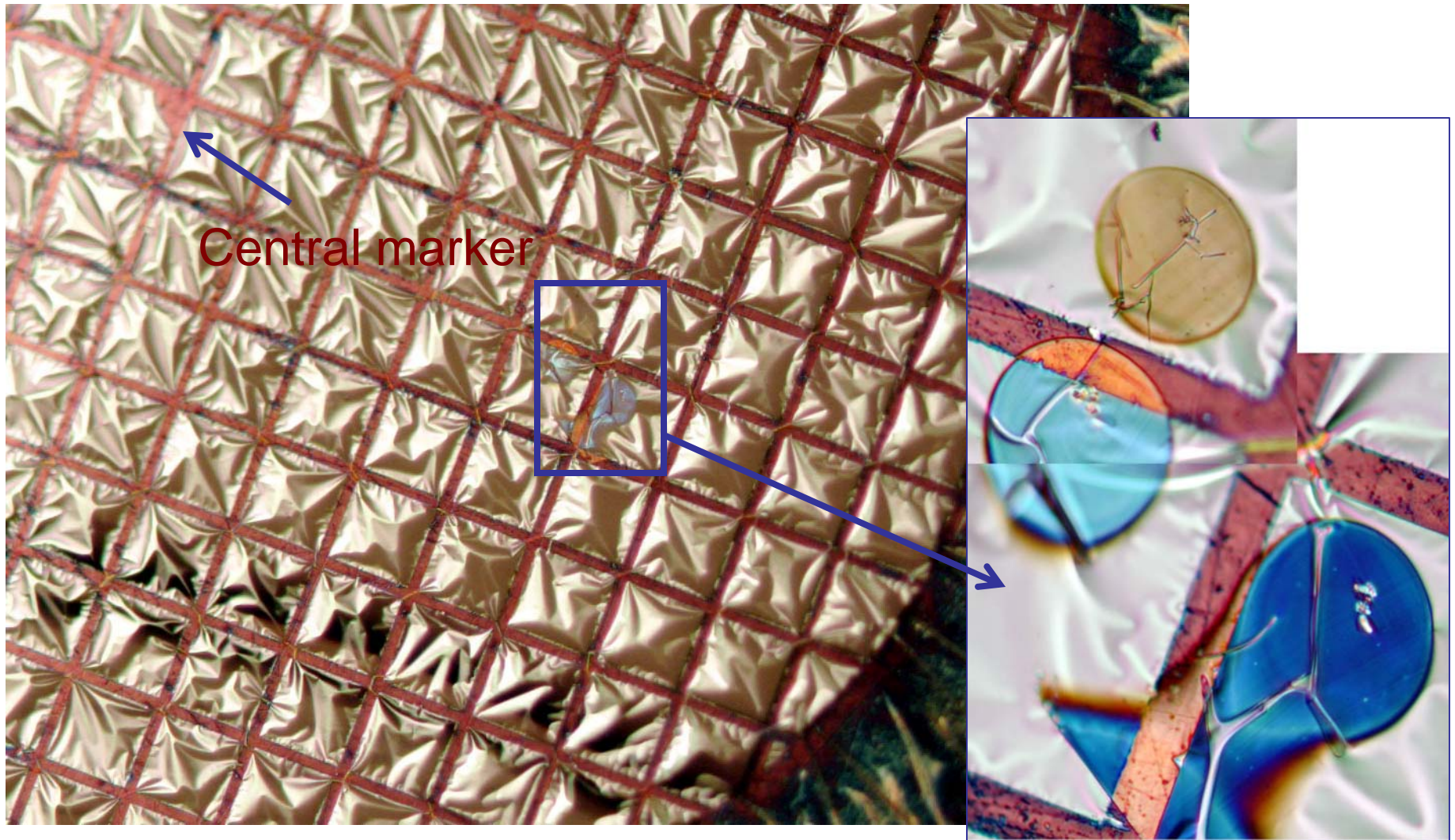
Fragment container#12, particle#2, Grid#2, microtome slice #8-12 (100nm x3)

No thin sections on the grid.

Sorry.

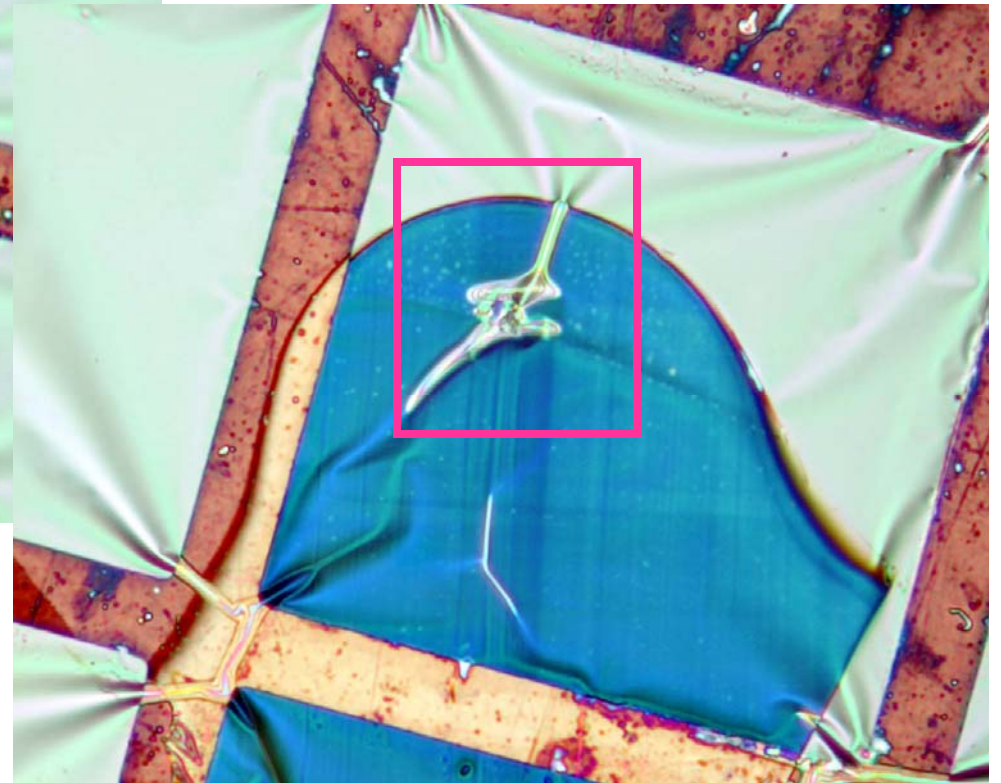
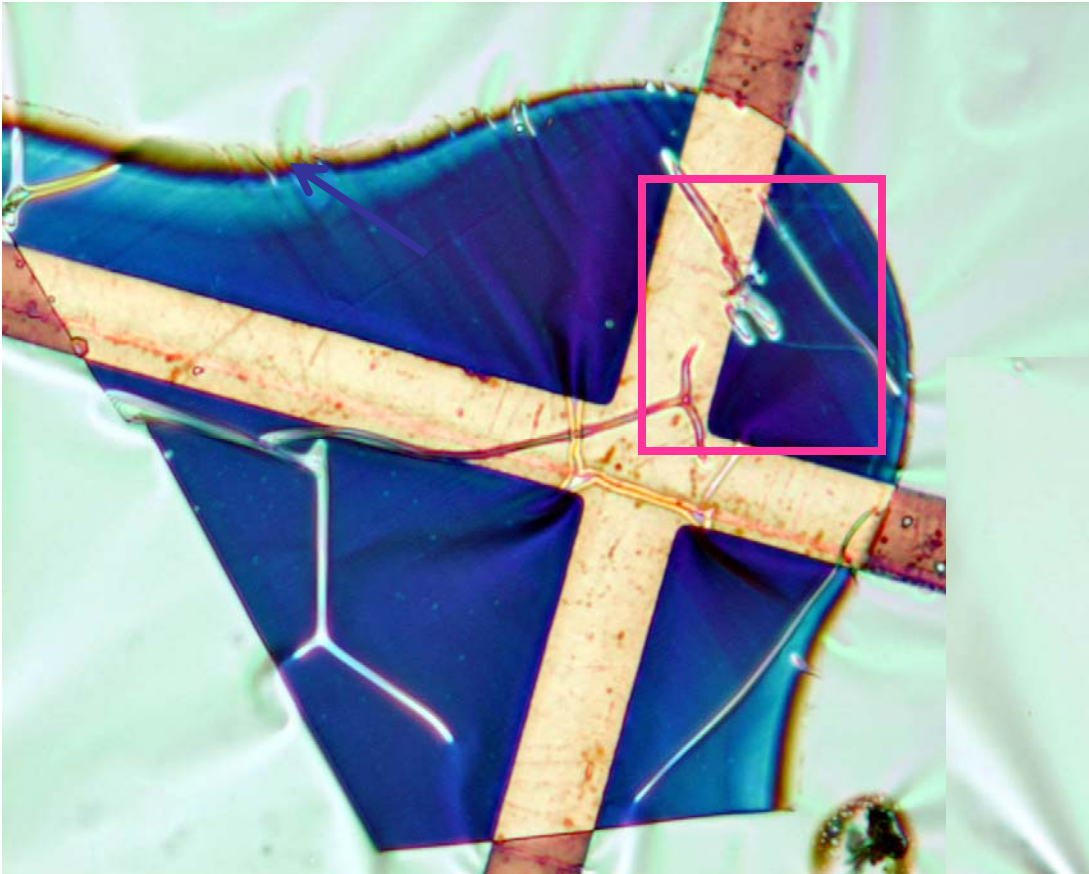
Sample# 2, 1, 4

Fragment container#12, particle#2, Grid#3, microtome slice #13-15 (100nm x3)



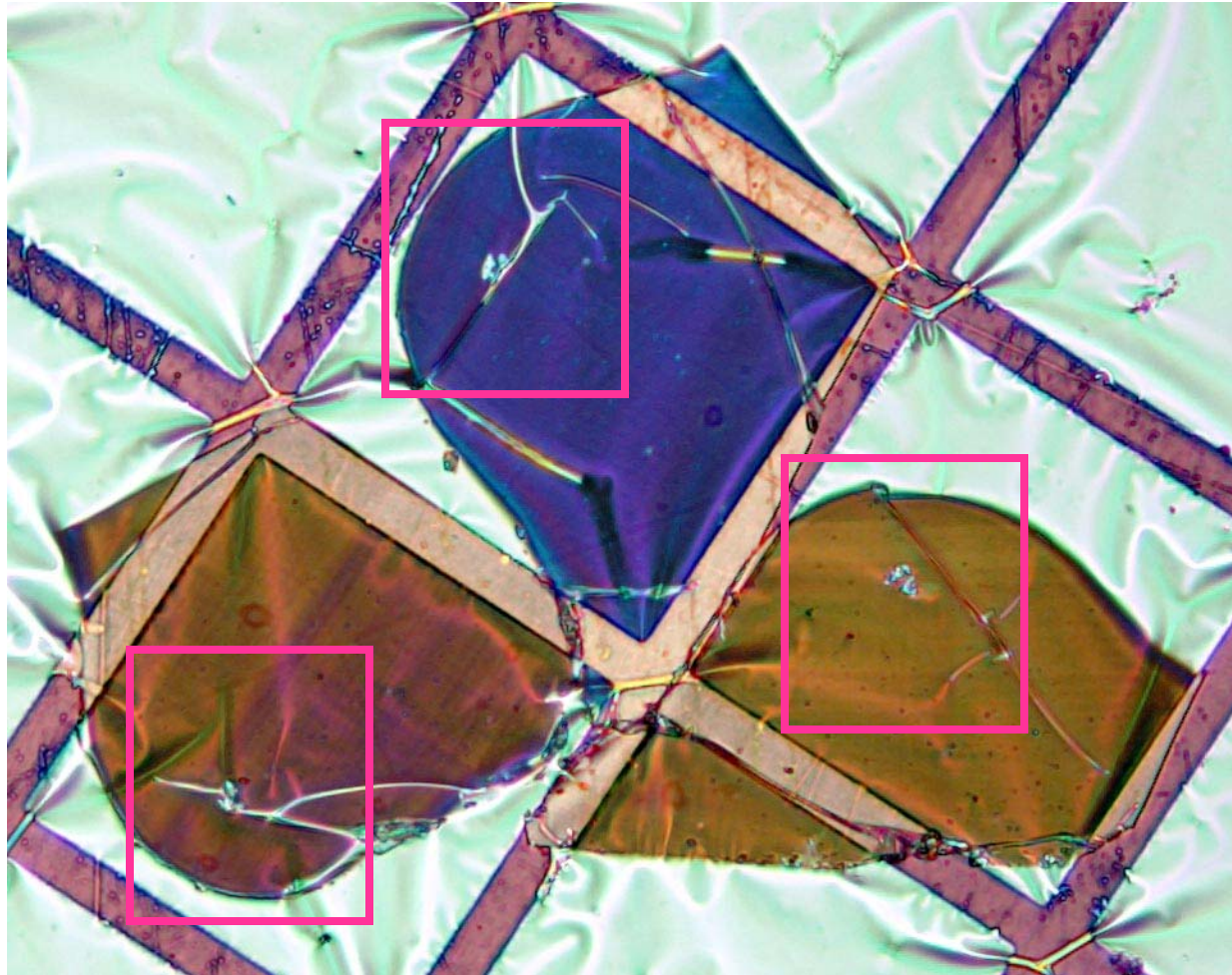
Sample# 2, 1, 5

Fragment container#12, particle#2, Grid#4, microtome slice #16-18 (100nm x3)



Sample# 2, 1, 6

Fragment container#12, particle#2, Grid#5, microtome slice #19-21 (100nm x3)



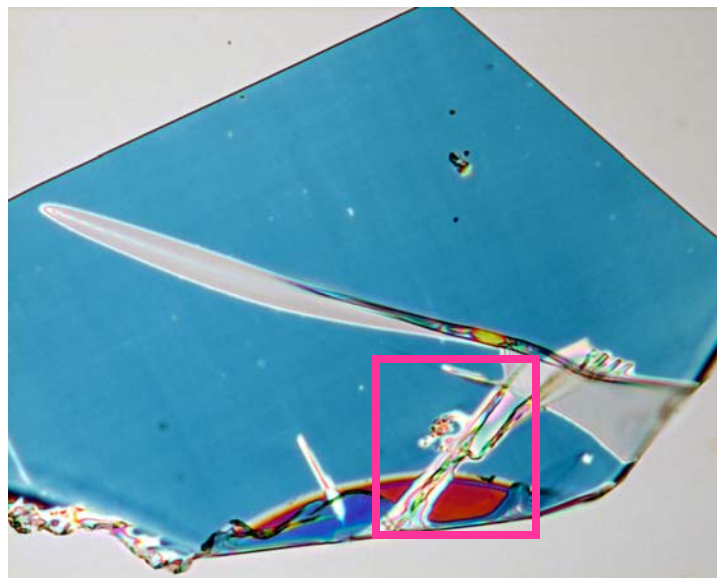
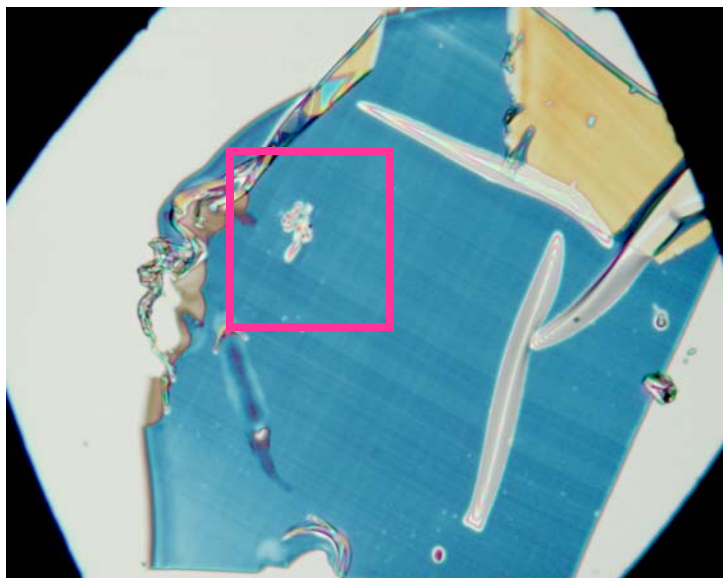
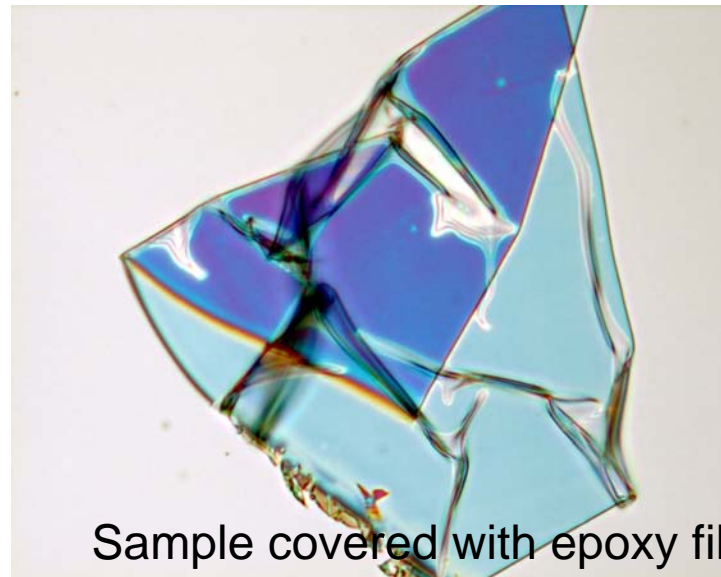
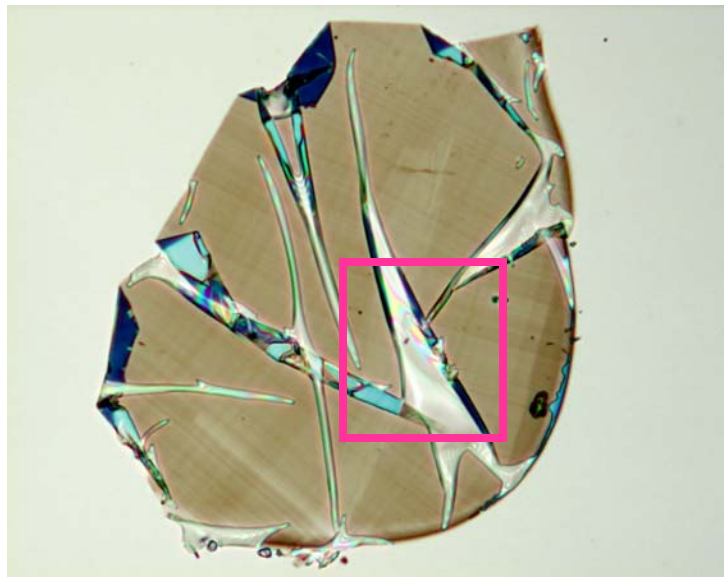
Sample# 2, 1, 7

Fragment container#12, particle#2, Grid#6, microtome slice #22-24 (100nm x3)

The grid severely damaged. No section available.

Sample# 2, 1, 8

Fragment container#12, particle#2, Grid#7, Si-wafer#1 microtome slice #25-28 (100nm x4)

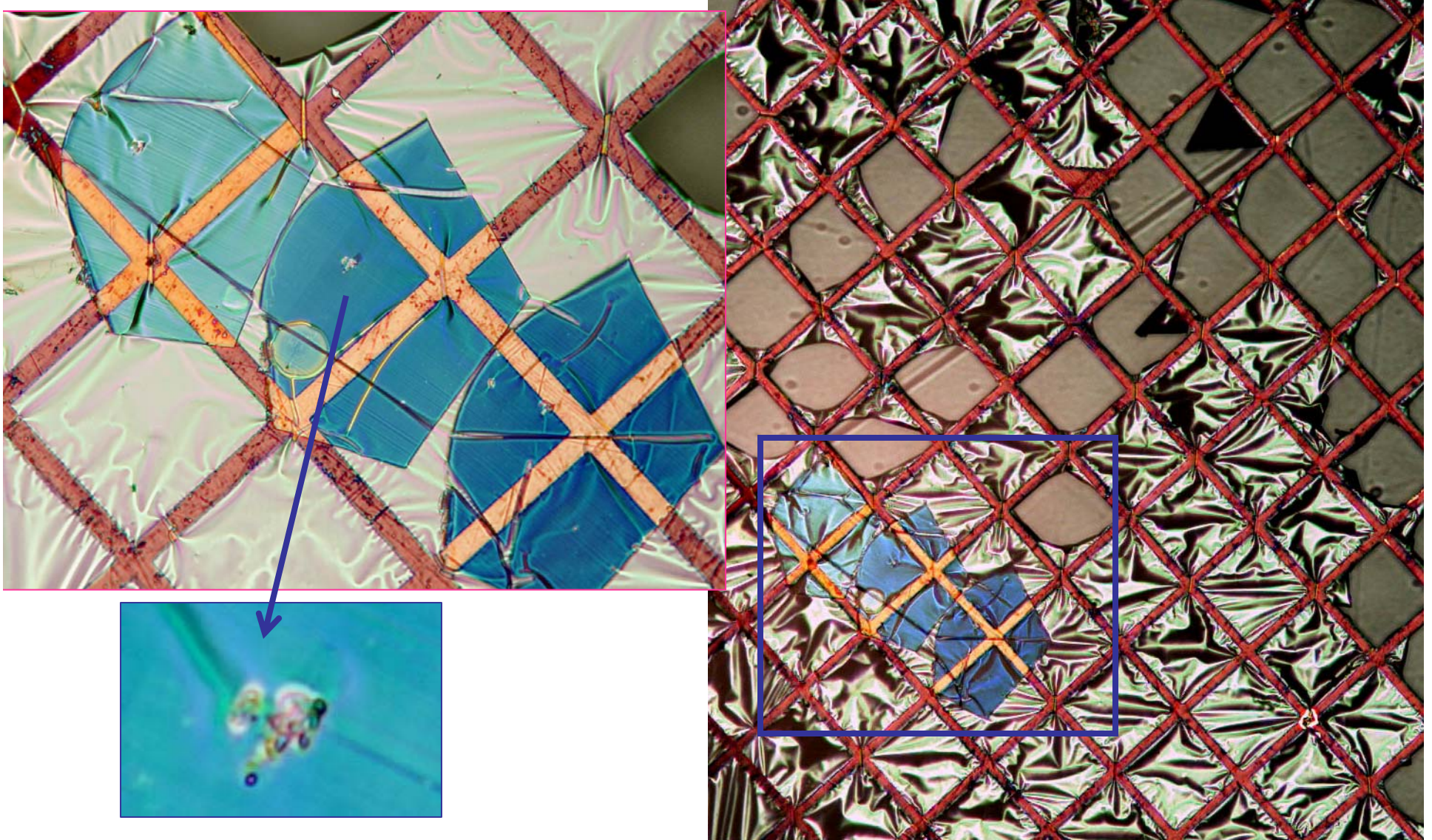


Allocated to (Min-Pet, Isotope Bulk, Organic, Spec)

Sample# 2, 1, 9

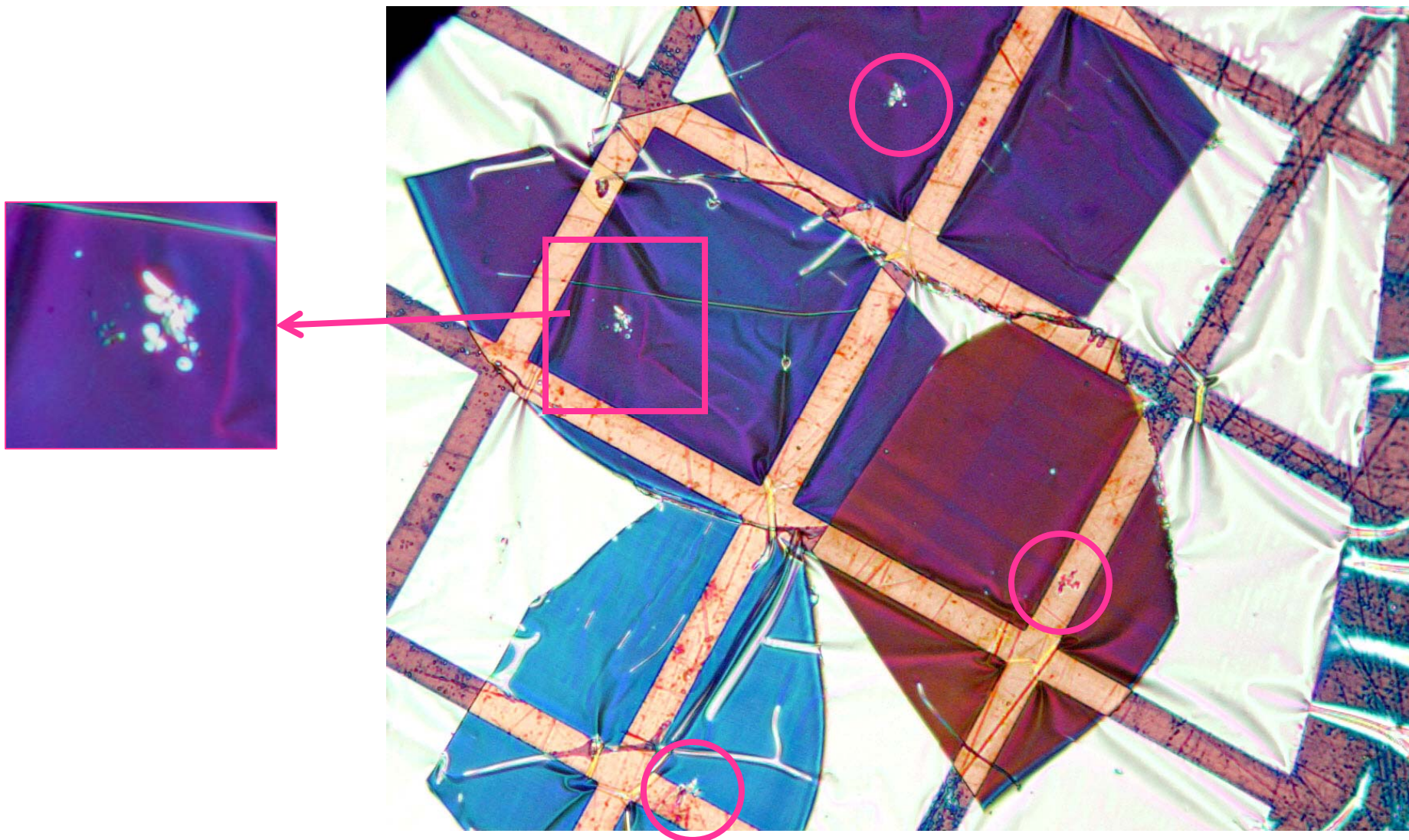
Fragment container#12, particle#2, Grid#8, microtome slice #29-31 (100nm x3),

Grid severely damaged, but three thin sections surviving.



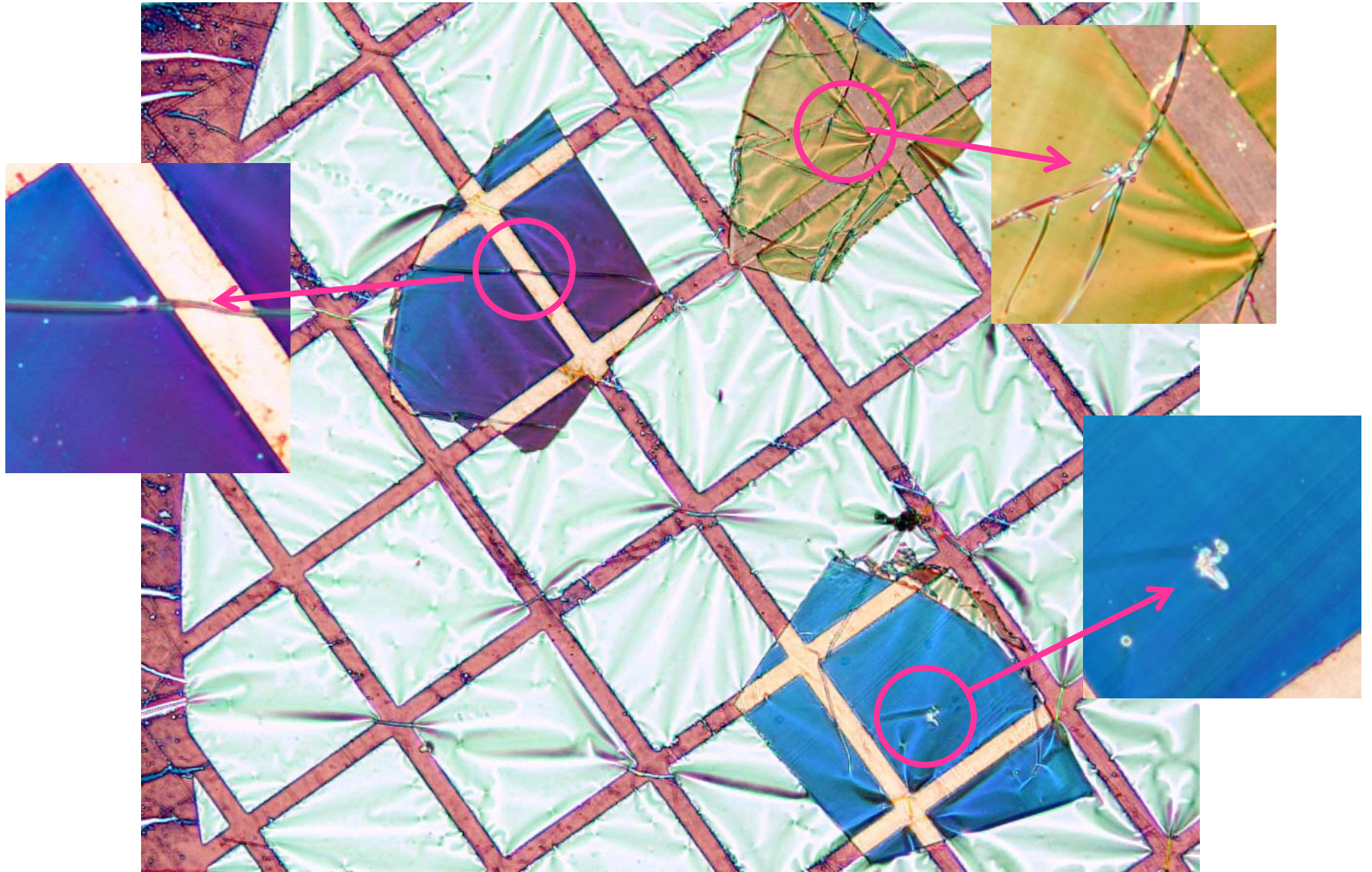
Sample# 2, 1, 10

Fragment container#12, particle#2, Grid#9, microtome slice #32-35 (100nm x4)



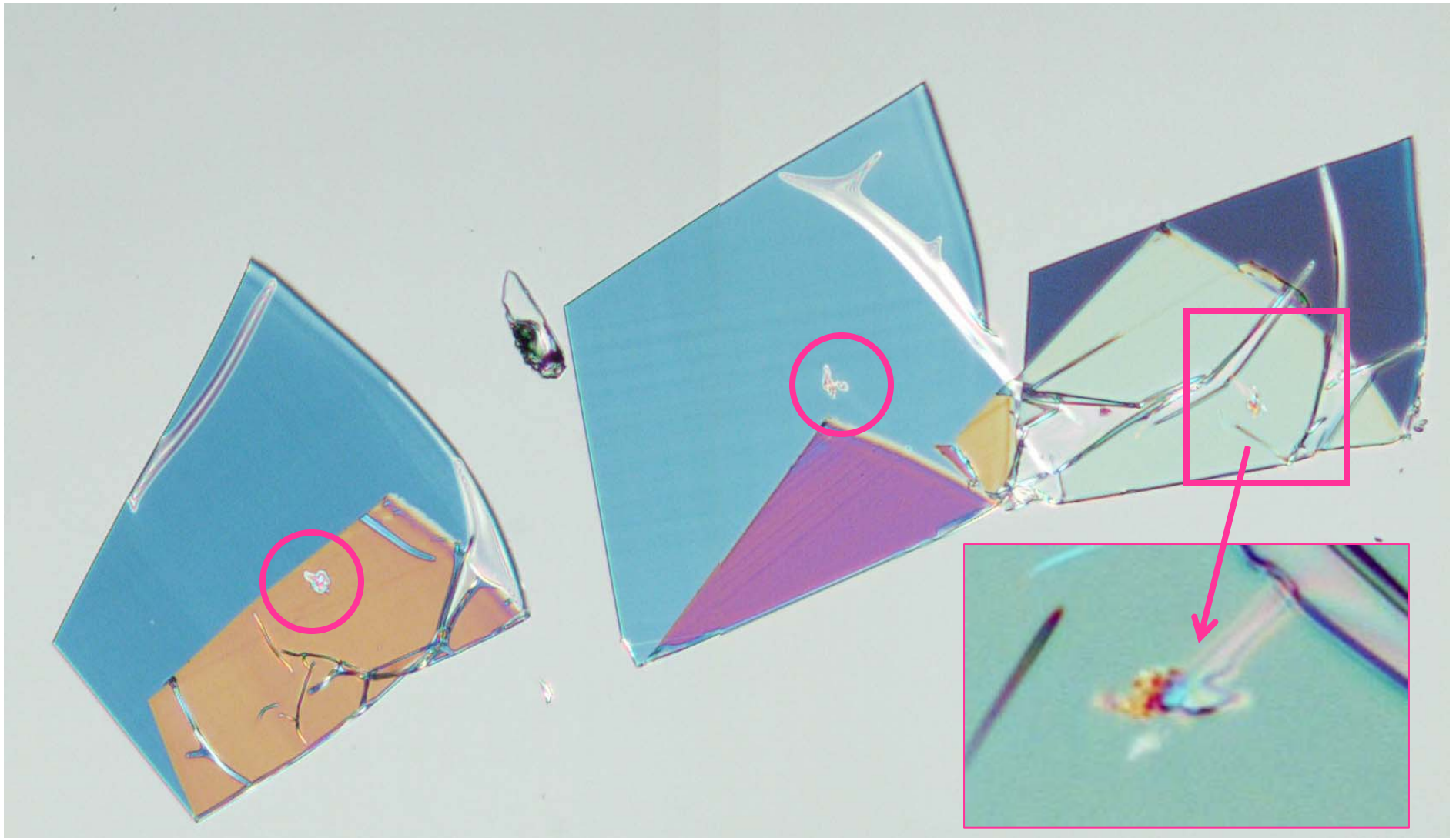
Sample# 2, 1, 11

Fragment container#12, particle#2, Grid#10, microtome slice #36-38 (100nm x3)



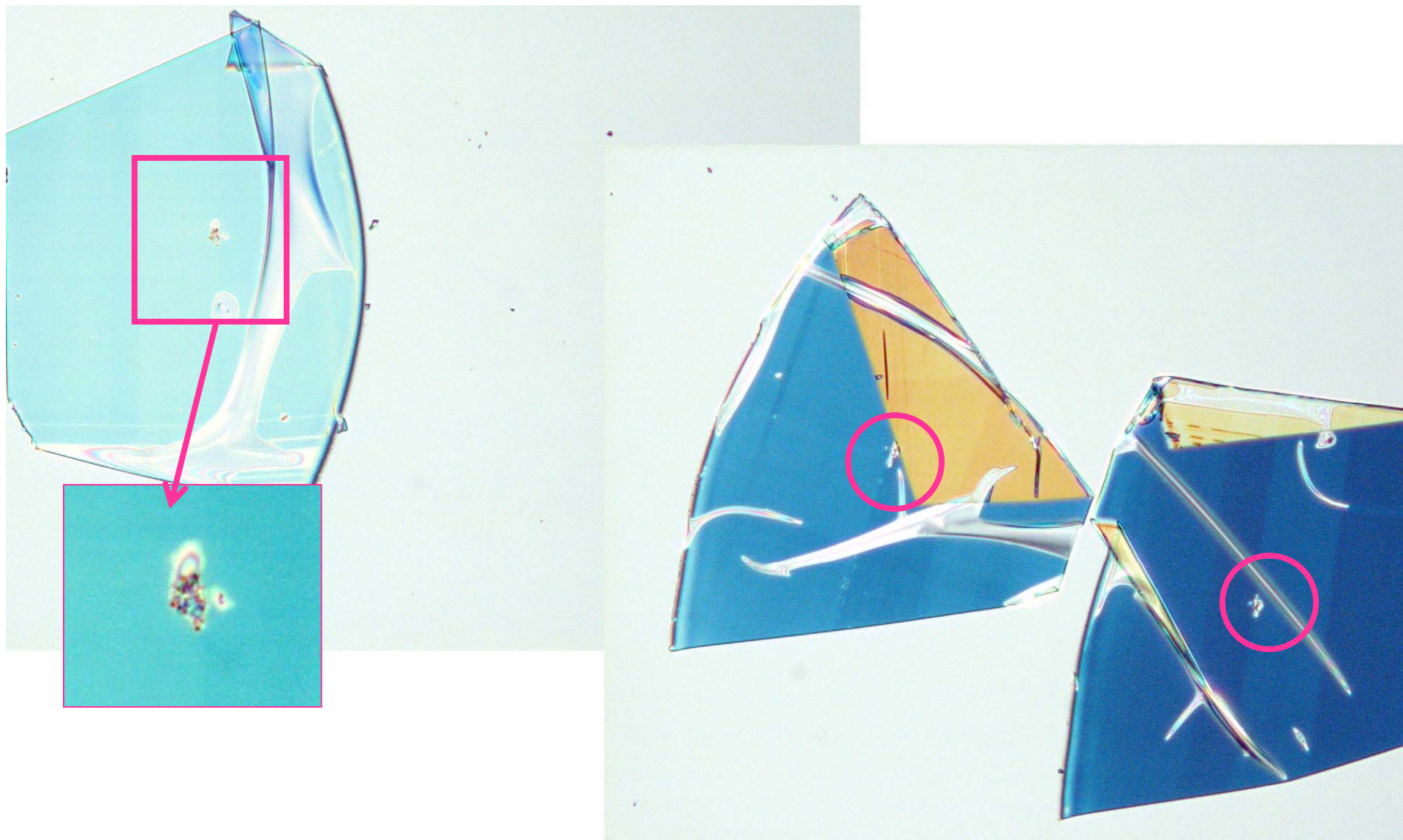
Sample# 2, 1, 12

Fragment container#12, particle#2, Grid#11, Si-wafer#2, microtome slice #39-41 (100nm x3)



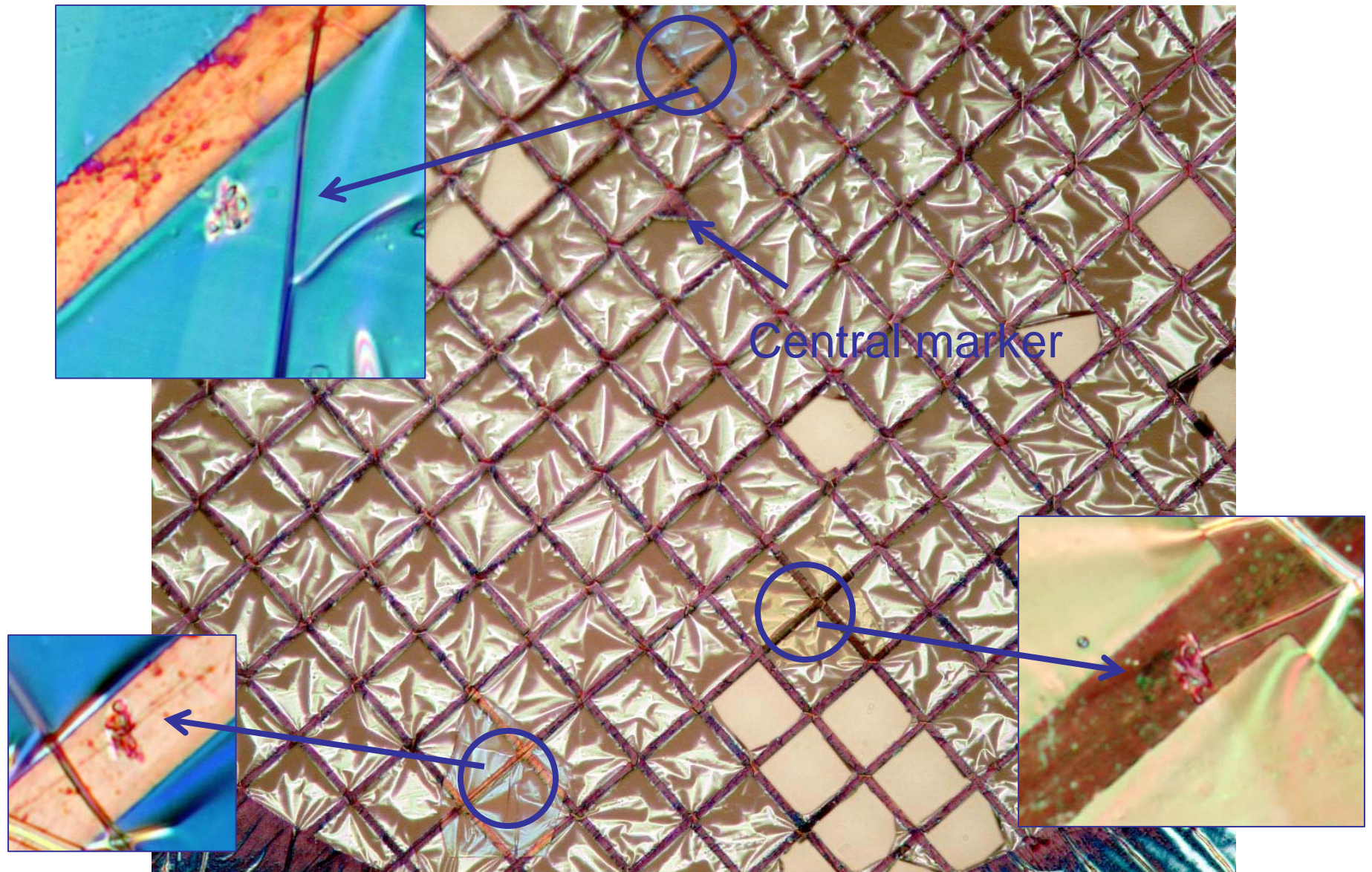
Sample# 2, 1, 13

Fragment container#12, particle#2, Grid#12, Si-wafer#3, microtome slice #42-44 (100nm x3)



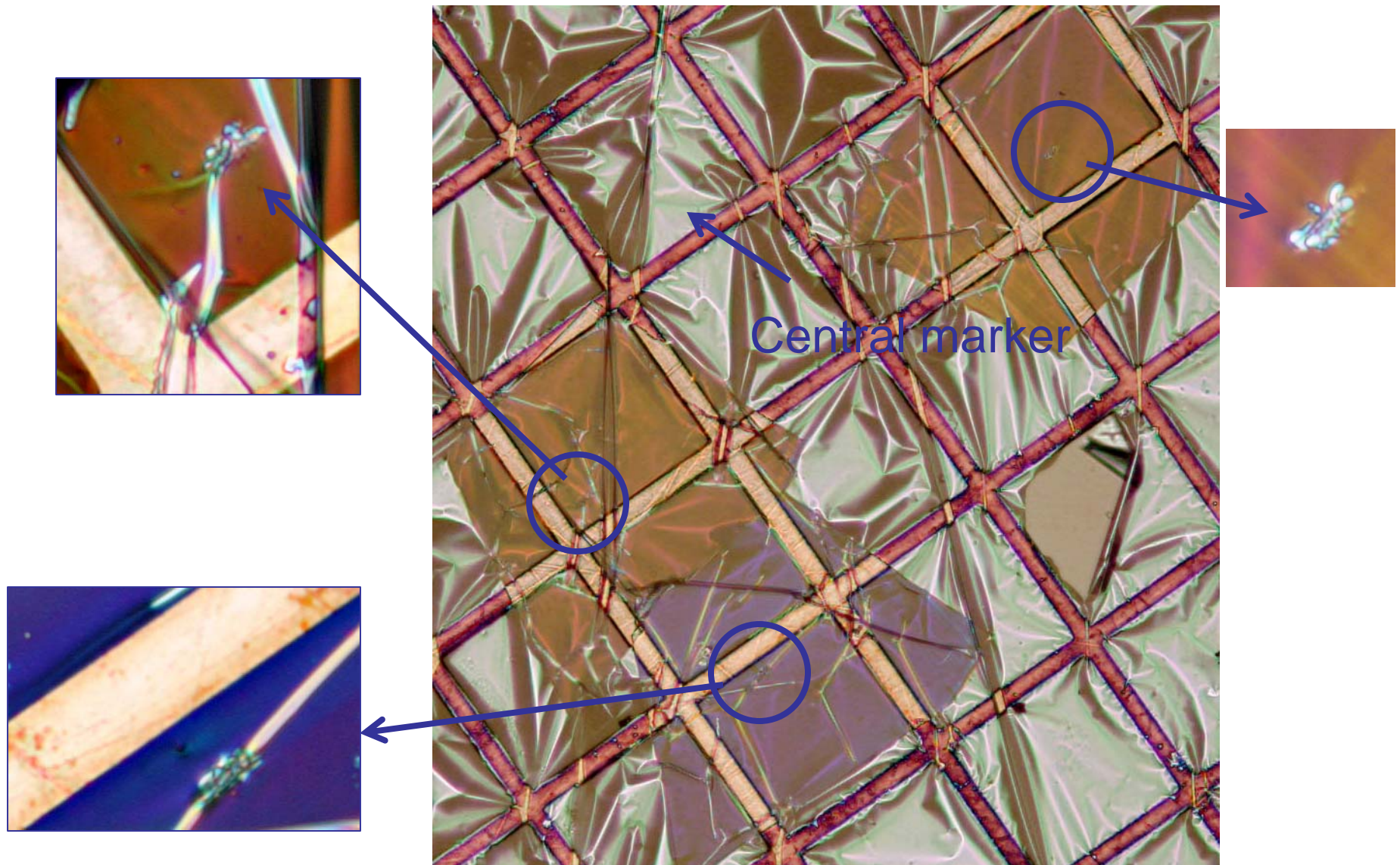
Sample# 2, 1, 14

Fragment container#12, particle#2, Grid#13, microtome slice #45-47 (100nm x3)



Sample# 2, 1, 15

Fragment container#12, particle#2, Grid#14, microtome slice #48-50 (100nm x3)



Sample# 2, 1, 16

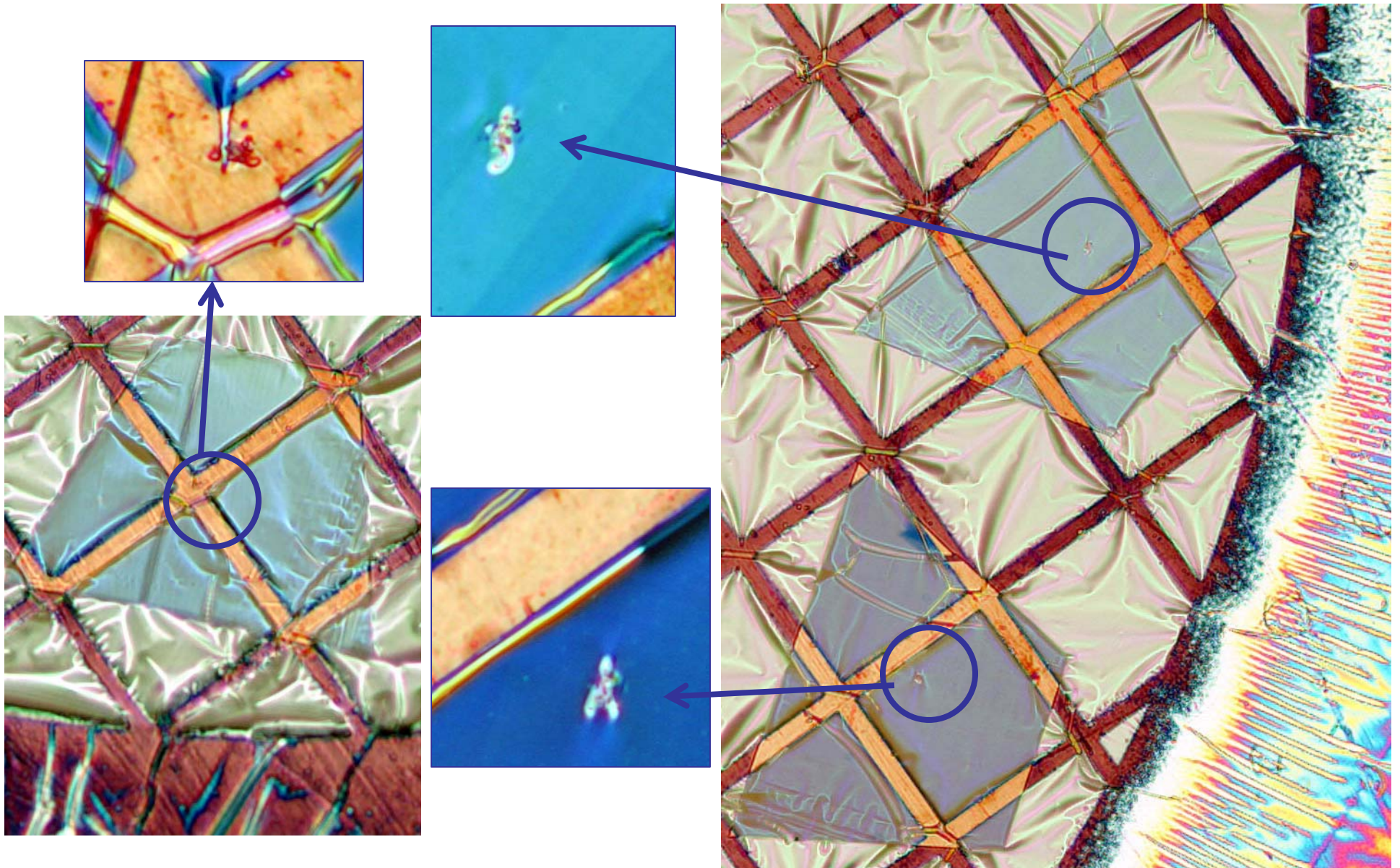
Fragment container#12, particle#2, Grid#15, microtome slice #51-53 (100nm x3)

Two sections available, both on Cu grid



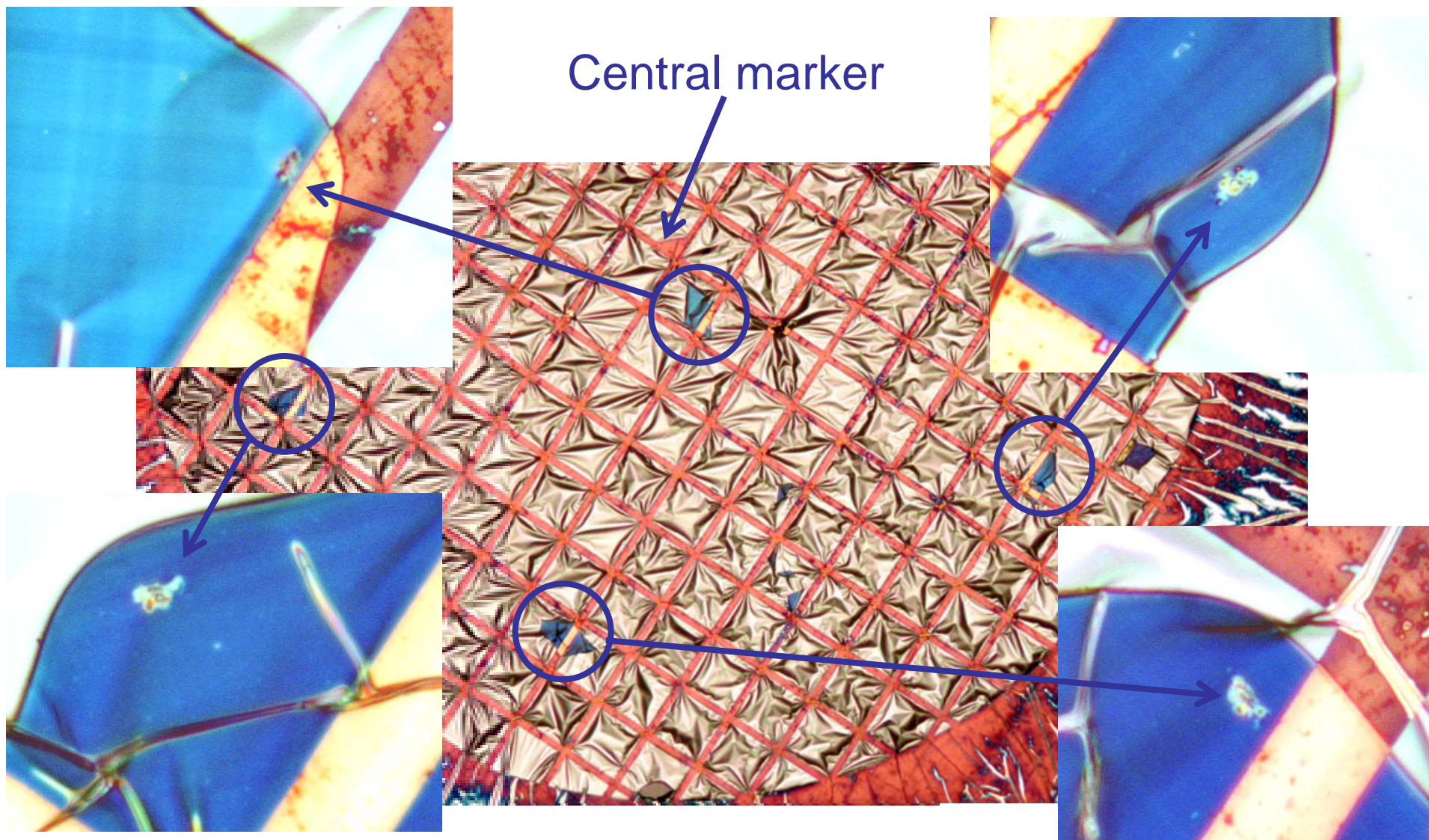
Sample# 2, 1, 17

Fragment container#12, particle#2, Grid#16, microtome slice #54-56 (100nm x3)



Sample# 2, 2, 1

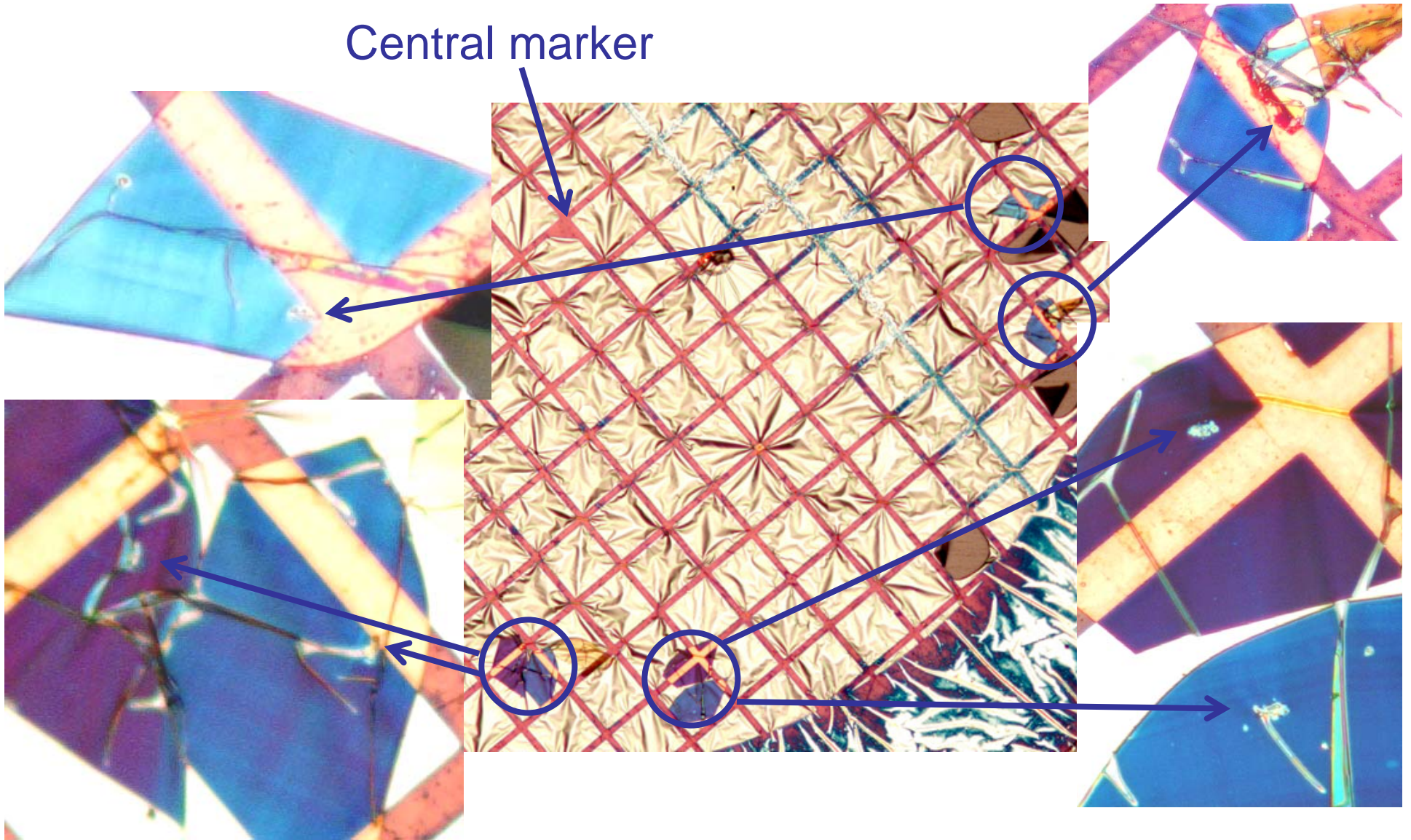
Fragment container#12, particle#3, Grid#1, microtome slice #1-6 (100nm x6)



Sample# 2, 2, 2

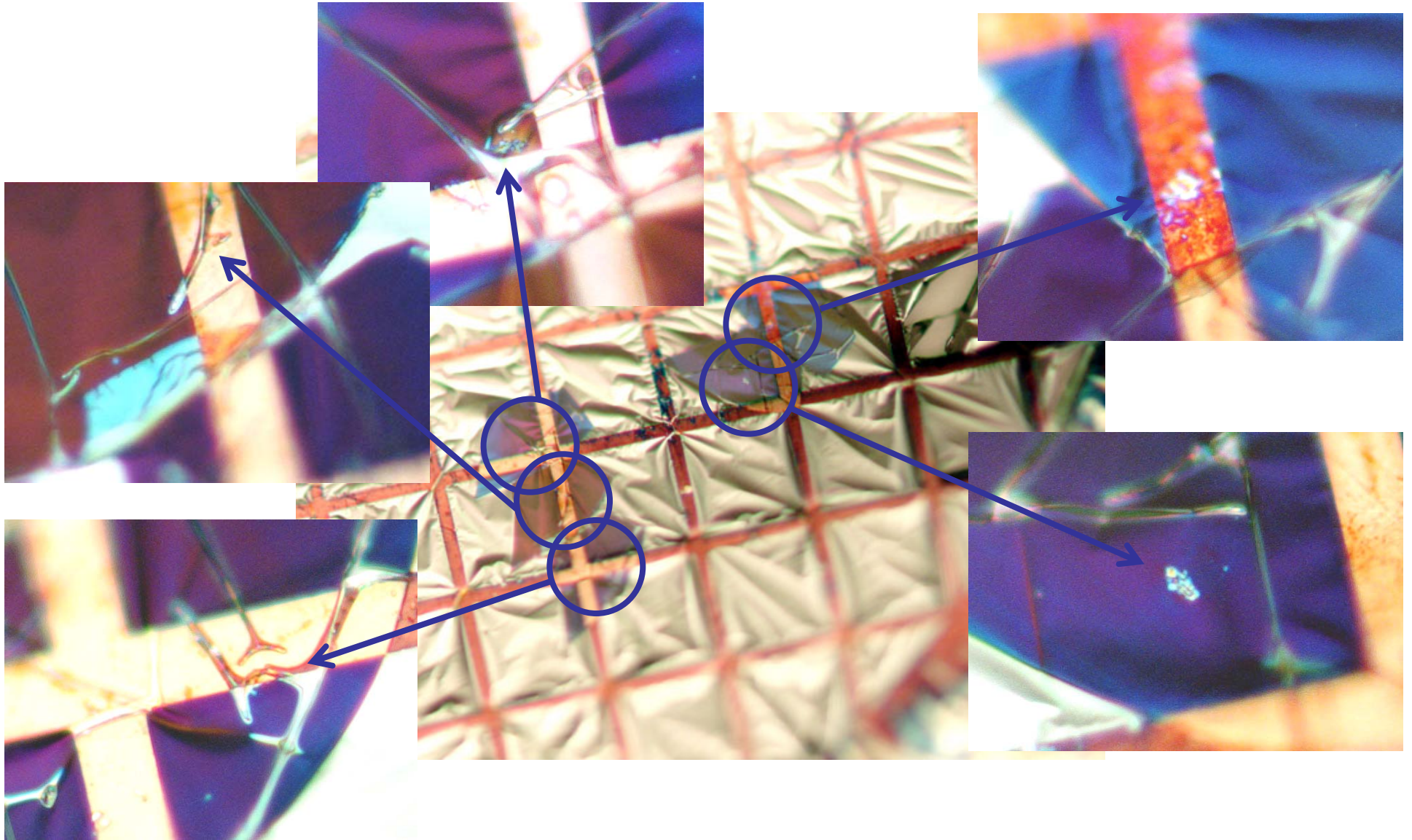
Fragment container#12, particle#3, Grid#2, microtome slice #7-13 (100nm x7)

Central marker



Sample# 2, 2, 3

Fragment container#12, particle#3, Grid#3, microtome slice #14-18 (100nm x5)



Sample# 2, 2, 4

Fragment container#12, particle#3, Grid#4, microtome slice #19-22 (70nm x4)

