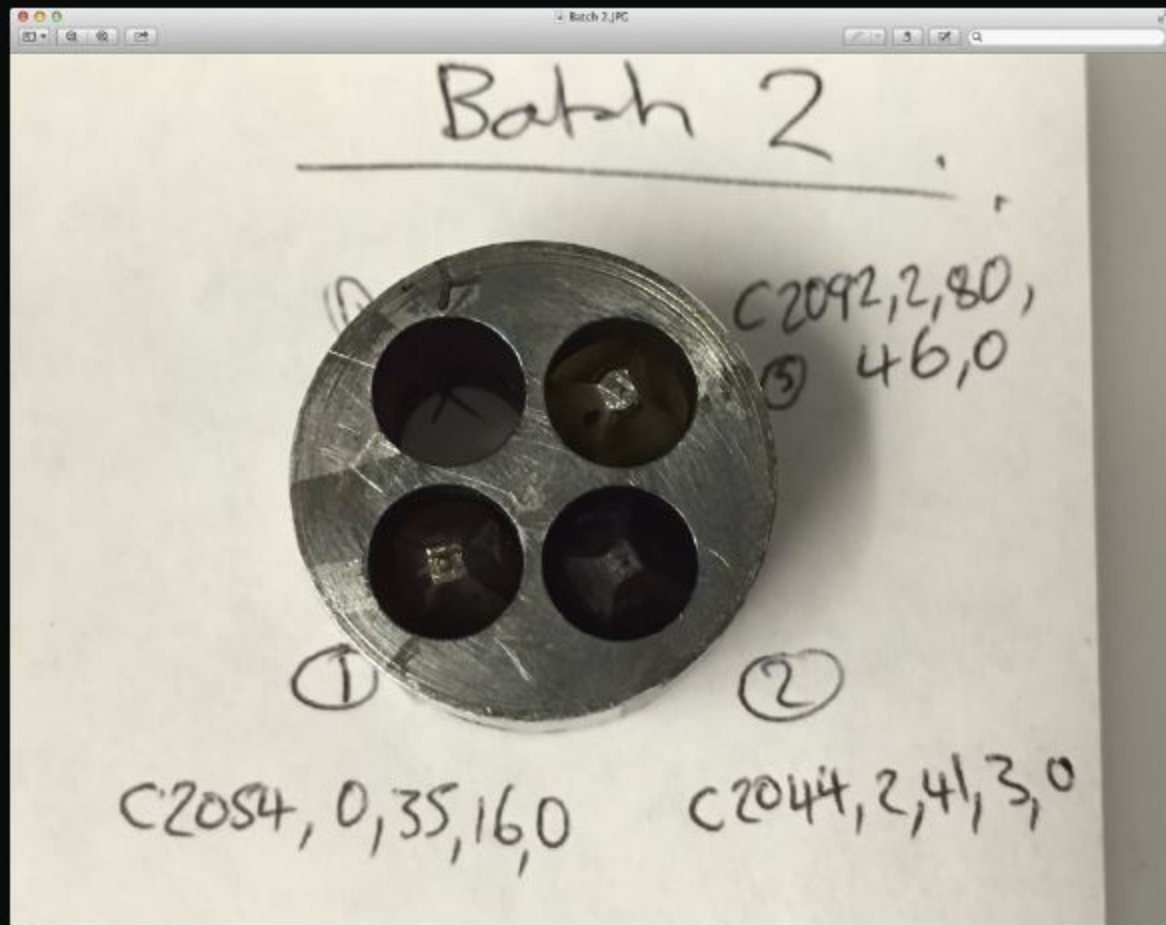
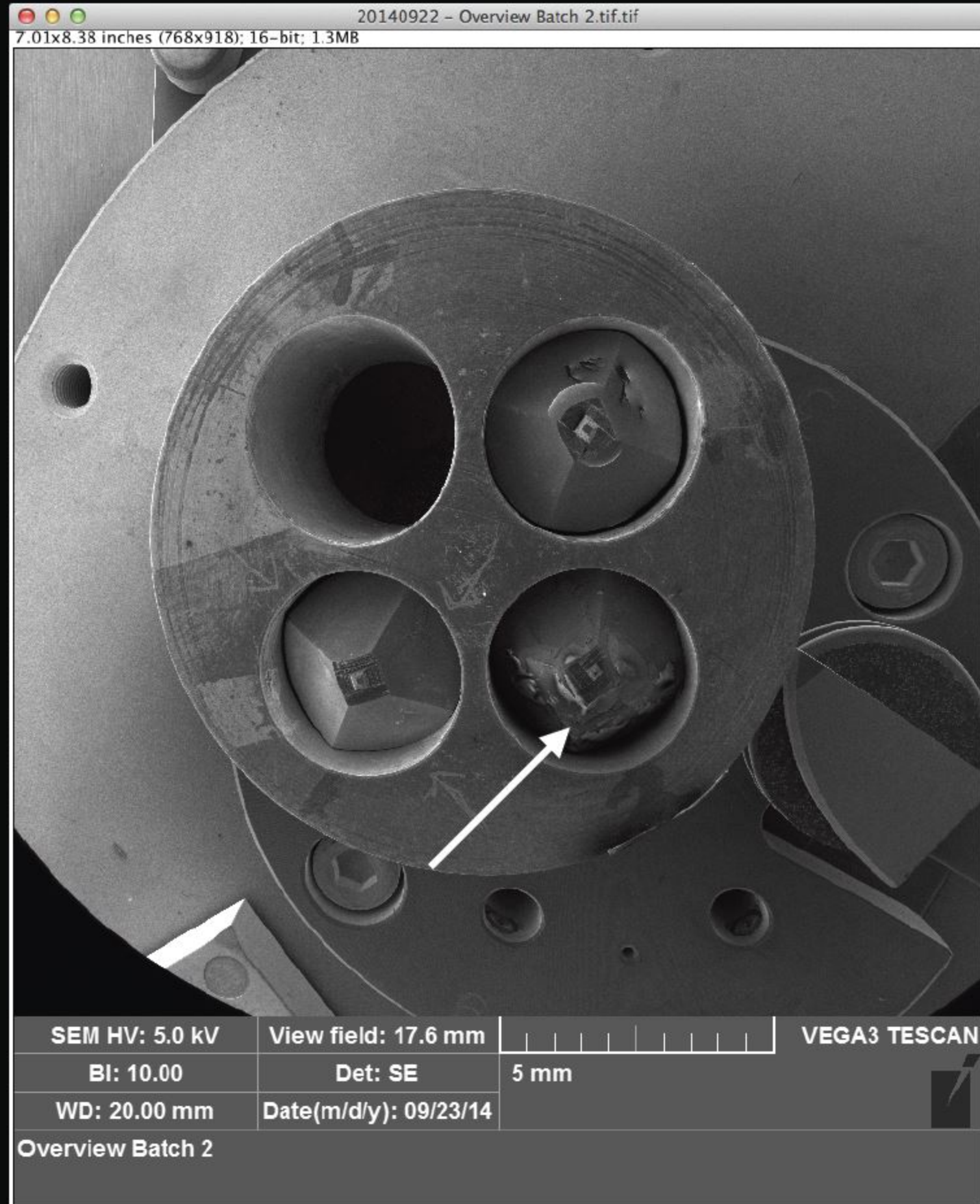


# Stardust SEM Bullet Survey Volume 1

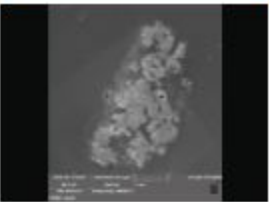
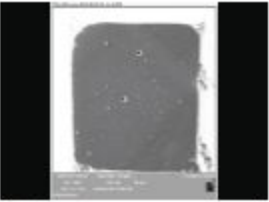
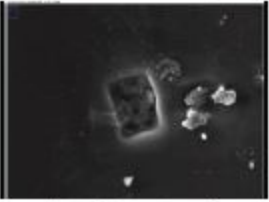

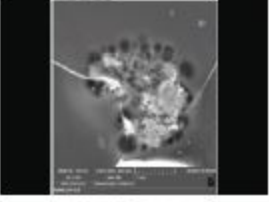
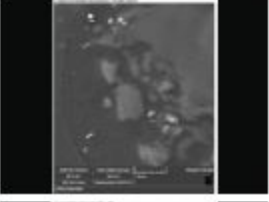

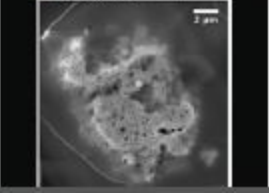
Zack Gainsforth

22 Sep 2014

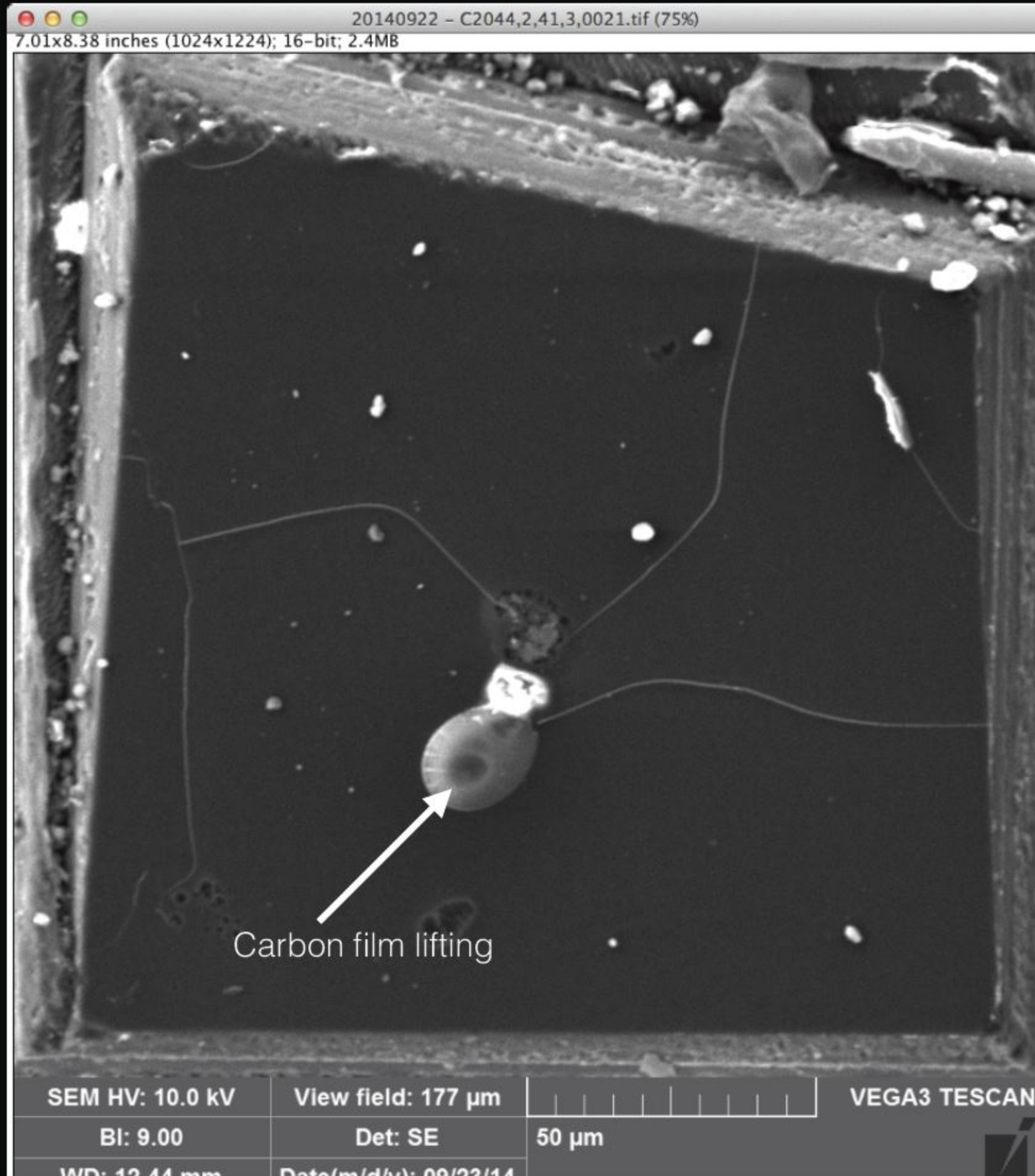
# Overview of second batch



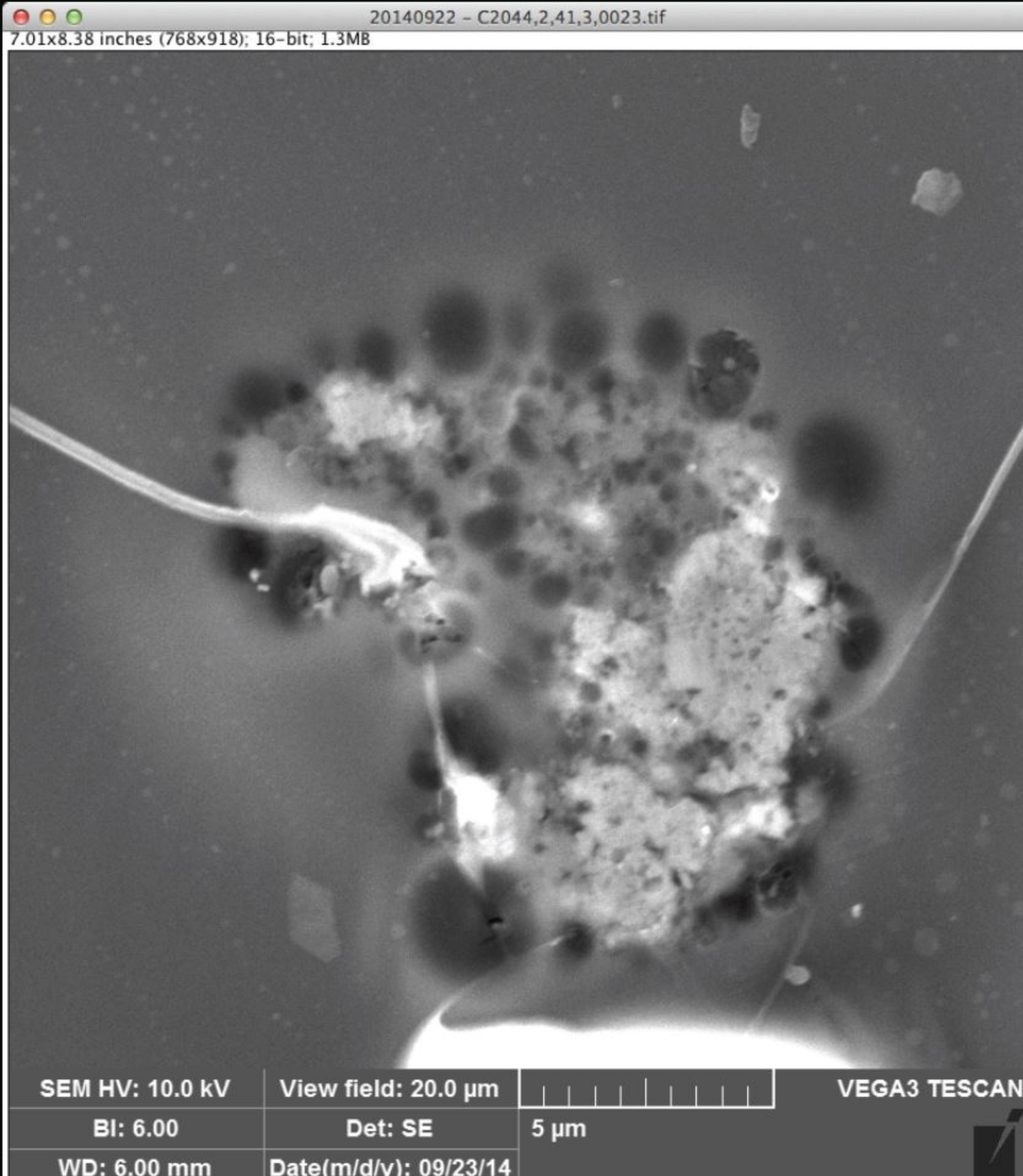
# Summary

Bullet	Image	EDS	Summary	Recommend SIMS?
C2004,1,44,4,0		Y	Material clearly visible. Fine grained.	Y
FC12,0,16,1,0		N	Nothing visible.	N
FC3,0,2,2,0		N	Material visible, but likely altered by previous experiment.	N
C2054,0,35,16,0		N	Material visible, possibly altered by previous experiment	N
C2044,2,41,3,0		Y	Material visible. Heterogeneous assembly of different phases.	Y
C2092,2,80,46,0		Y	Aerogel visible, not clear if much track is present.	Y
C2092,2,80,48,0		Y	Material clearly visible. Fine grained.	Y
C2092,2,80,49,0		Y	Material clearly visible. Fine grained.	Y

# C2044,2,41,3,0

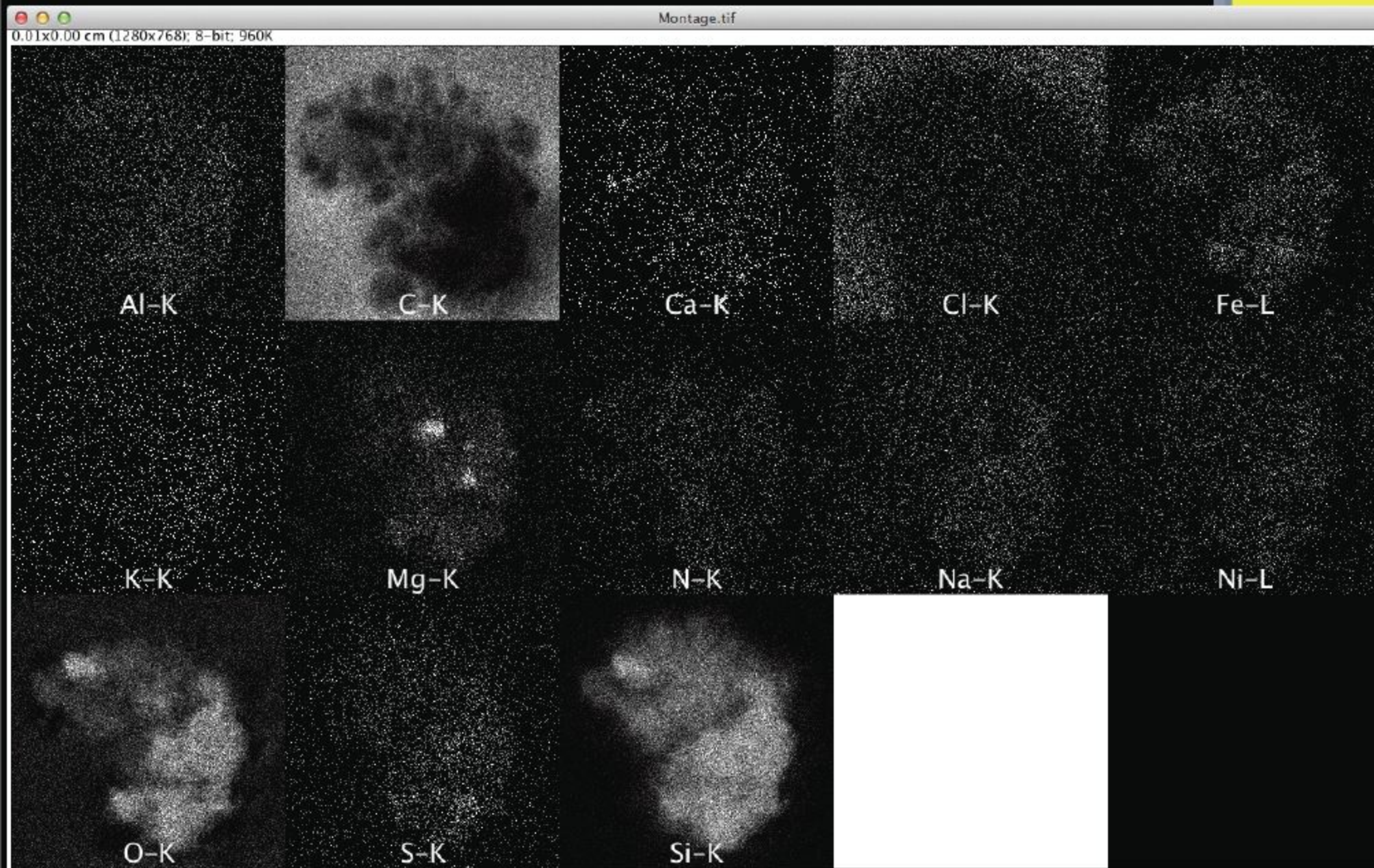
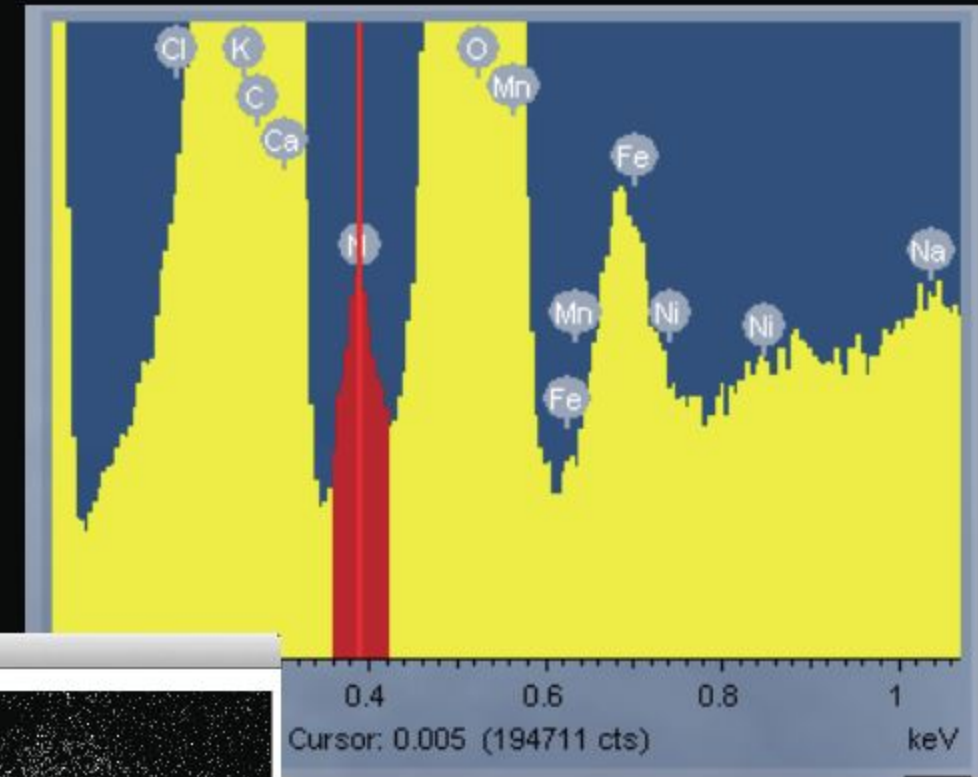
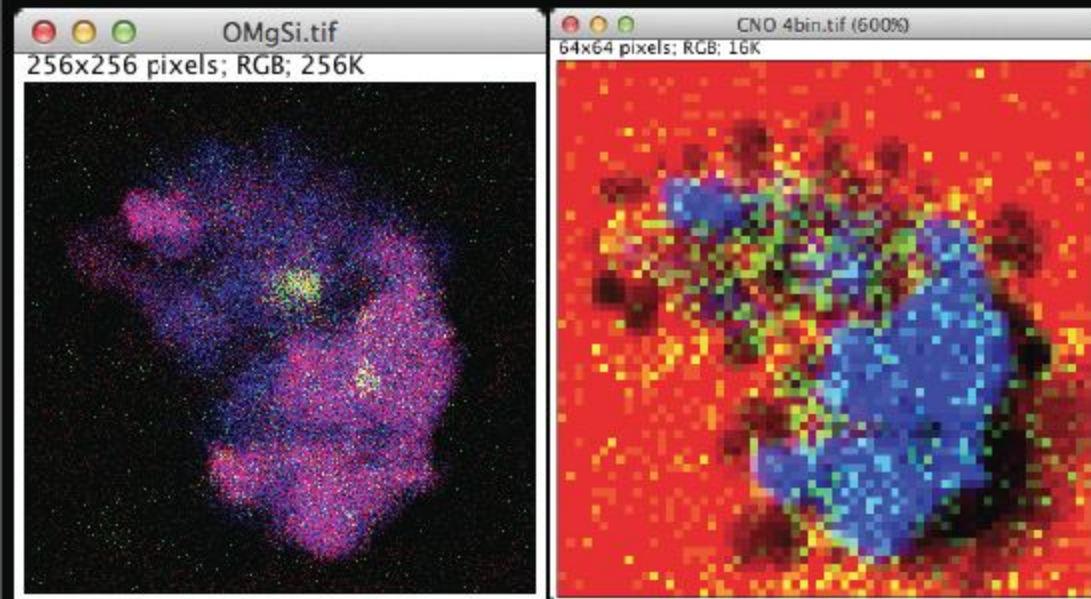


# C2044,2,41,3,0



This one looks more like a terminal particle. Check out the EDS maps.

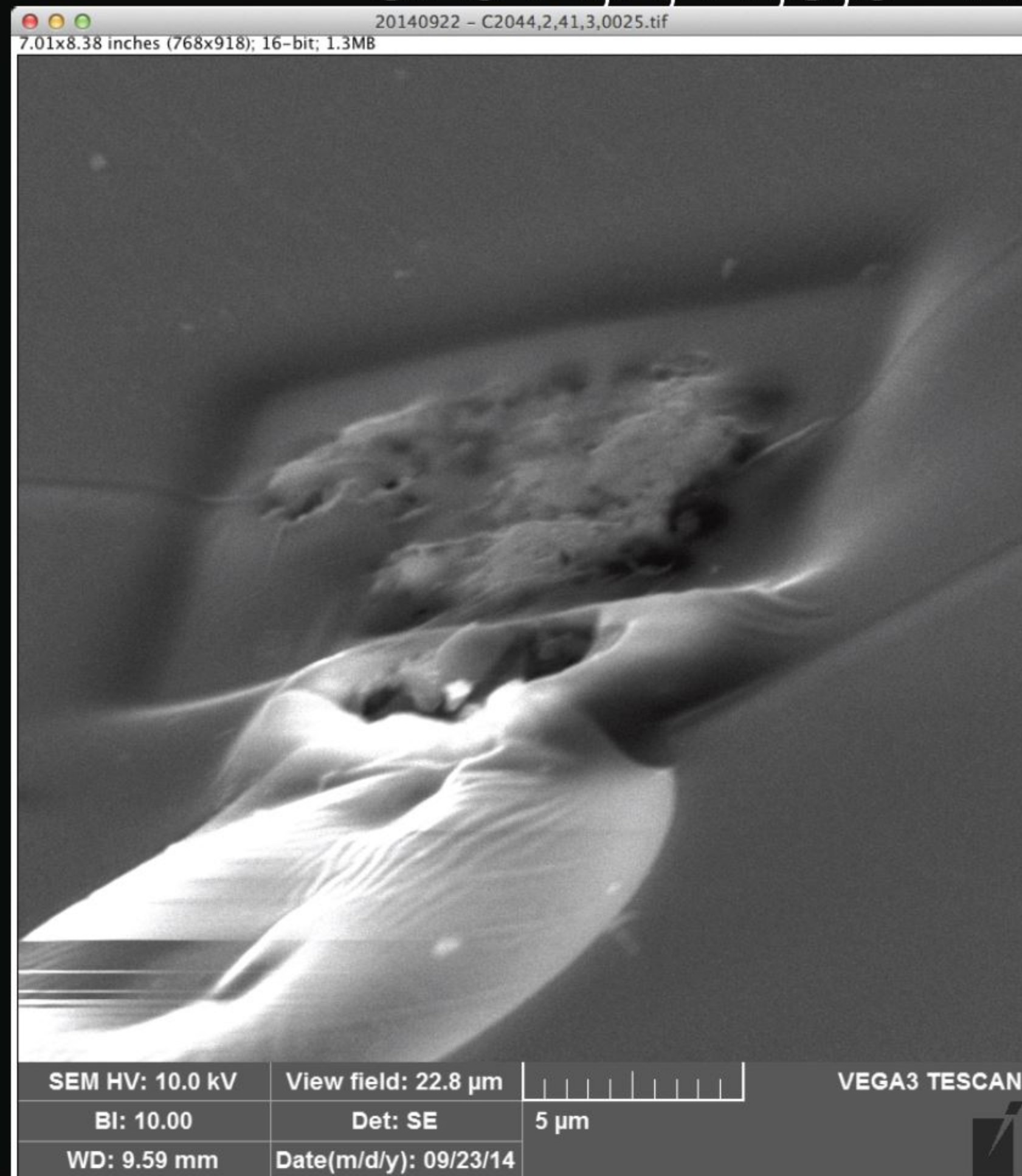
# C2044,2,41,3,0



Notice the N is real! It is in the silicon rich portion

Wouldn't this be nice for NanoFTIR if only it weren't coated...

# C2044,2,41,3,0 - After EDS



Estimated topography about a micron.